



Volvo Construction Equipment

EC250E, EC300E

VOLVO EXCAVATORS 24.6-33.9 t / 54,230-74,740 lb 218-245 hp



A PASSION FOR PERFORMANCE.

At Volvo Construction Equipment, we're not just coming along for the ride. Developing products and services that raise productivity – we are confident we can lower costs and increase profits for industry experts. Part of the Volvo Group, we are passionate about innovative solutions to help you work smarter – not harder.

Helping you to do more.

Doing more with less is a trademark of Volvo Construction Equipment. High productivity has long been married to low energy consumption, ease of use and durability. When it comes to lowering life-cycle costs, Volvo is in a class of its own.

Designed to fit your needs.

There is a lot riding on creating solutions that are suited to the particular needs of different industry applications. Innovation often involves high technology – but it doesn't always have to. Some of our best ideas have been simple, based on a clear and deep understanding of our customers' working lives.



You learn a lot in 180 years.

Over the years, Volvo has advanced solutions that have revolutionized the use of construction equipment. No other name speaks Safety louder than Volvo. Protecting operators, those around them and minimizing our environmental impact are traditional values that continue to shape our product design philosophy.

We're on your side.

We back the Volvo brand with the best people. Volvo is truly a global enterprise, one that is on standby to support customers quickly and efficiently – wherever they are.

We have a passion for performance.



Volvo Trucks



Renault Trucks



Mack Trucks



UD Trucks



Volvo Buses



Volvo Construction Equipment



Volvo Penta



Volvo Financial Services

Doing more for you.

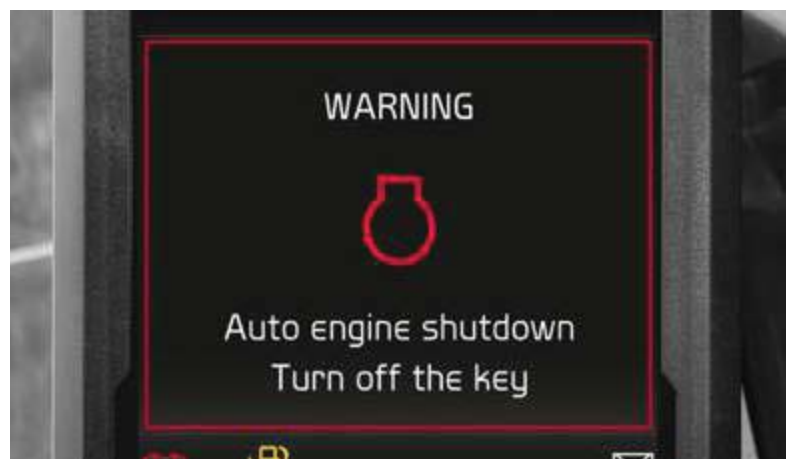
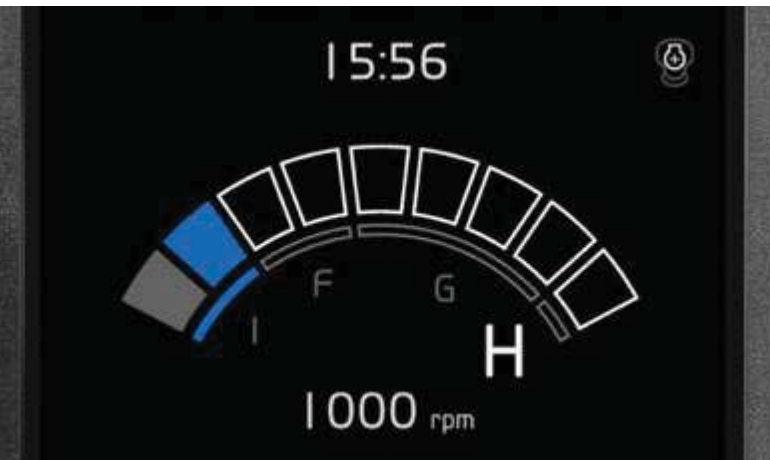
Volvo's EC250E/EC300E Stage IV crawler excavators are powerful and efficient machines designed to reduce fuel consumption and increase your productivity. With advanced technology, the machines deliver a significant improvement in fuel efficiency, saving your business time and cost. Put your mind at ease with a Volvo excavator.

Automatic idling system

Engine speed is reduced to idle when the controls are inactive for a pre-set amount of time (between 3 and 20 seconds), which reduces fuel consumption and noise for nearby workers.

Work modes

Volvo's integrated work mode system now includes the G4 mode for optimum fuel efficiency and machine performance. You can choose the best work mode for the task at hand – select from I (Idle), F (Fine), G (General) and H (Heavy).



Eco-gauge

Eco-gauge is an added gauge bar that indicates momentary fuel consumption and can be reset through the display monitor. This will track fuel consumption under different applications.

Auto-engine shut down

E-Series excavators feature automatic engine shutdown for when the machine is not being used. When the machine is motionless for five minutes, the engine will automatically turn off and reduce your running costs.



ECO mode

Volvo's unique ECO mode optimizes the hydraulic system to reduce flow and pressure losses – resulting in improved fuel efficiency without any loss of performance in most operating conditions. ECO mode is automatically selected but can be switched off via the keypad.



Human Machine Interface (HMI)

All machine interfaces – including the joysticks, keypad and LCD monitor – are ergonomically positioned and designed for optimum control and efficiency. For operator convenience and ease of use, the number of switches has been significantly reduced.

Boost your productivity.

It's a fact that operators work more efficiently when they're given the best tools for the job. That's why, on top of being a superior production machine, the EC250E/EC300E has an ergonomic design with ideally placed controls and switches. With built in comfort and optimized control, operators will work efficiently and productively all day long.

Keypad + hot key

The optimally positioned keypad allows the operator to easily navigate through the LCD monitor and activate machine functions in a safe and comfortable way. The functionality of the camera, air conditioning and lights can be customized via the hot key – enabling the operator to select and save desired configurations.

8 inch LCD

The new, eight-inch non-glare colour LCD monitor displays machine status and information for easy operation. Through the use of a new remote keypad, the display enables the operator to easily navigate through various menus.



Joystick + shortcut key

The windshield wipers, camera or audio mute function can be assigned to a shortcut switch located on the joystick. This allows the operator to easily control the selected function by simply pressing a switch.

Bluetooth®

Bluetooth and a hands-free function have been added that allows the operator to connect to wireless functions for easier connectivity and more convenience.

Non-stop productivity.

Experienced and skilled Volvo engineers have developed and rigorously tested Stage IV/Tier 4 Final engine systems that deliver the ultimate combination of high productivity and low fuel consumption. Benefit from Volvo's signature high torque at low rpm and experience superior performance and reduced fuel consumption.

Attachment management system

The attachment management system – controlled through the monitor – stores the settings for up to 20 different hydraulic attachments for ease of operation. Depending on the options configured, the management system can store rated flow and relieve pressure.



Positive Control hydraulics + pump input torque

High pump flow combined with the electro-hydraulic control system creates a faster response and cycle time. In addition, the EC300E features increased pump input torque for a reduced cycle time.



Boom float

With the boom float function the pump power for boom lowering can be saved or used for other functions, reducing your cycle time. Also, the grading operation can be made easier.

Engine after treatment system

The After Treatment Control Module (ACM) automatically controls, monitors and diagnoses the after treatment system to secure emission regulation compliance.

V-ACT (engine and pumps are matched to optimize performance)

It's the combination of the durable D8 Volvo engine and intelligent hydraulic system that makes all the difference. Boosting power while reducing both fuel consumption and emissions results in quicker cycle times and greater productivity.



Proportional two-pump flow

The proportional two-pump flow makes it easier for the operator to improve the machine's controllability for a higher quality working finish. The ease of operation helps to get a quality job done quicker.



Bolt-on wear plates

At the arm end where the most movement and wear occurs, Volvo provides wear plates which are easily replaced in a matter of hours in the field – a service that can't be matched by its competitors.

Built to last.

From quarries to mass excavation, this heavy-duty production machine has been built to work on tough job sites. Featuring a robust, reinforced structure and high quality welding, the EC250E/ EC300E boast superior strength and durability. Experience reliability you can count on with Volvo.

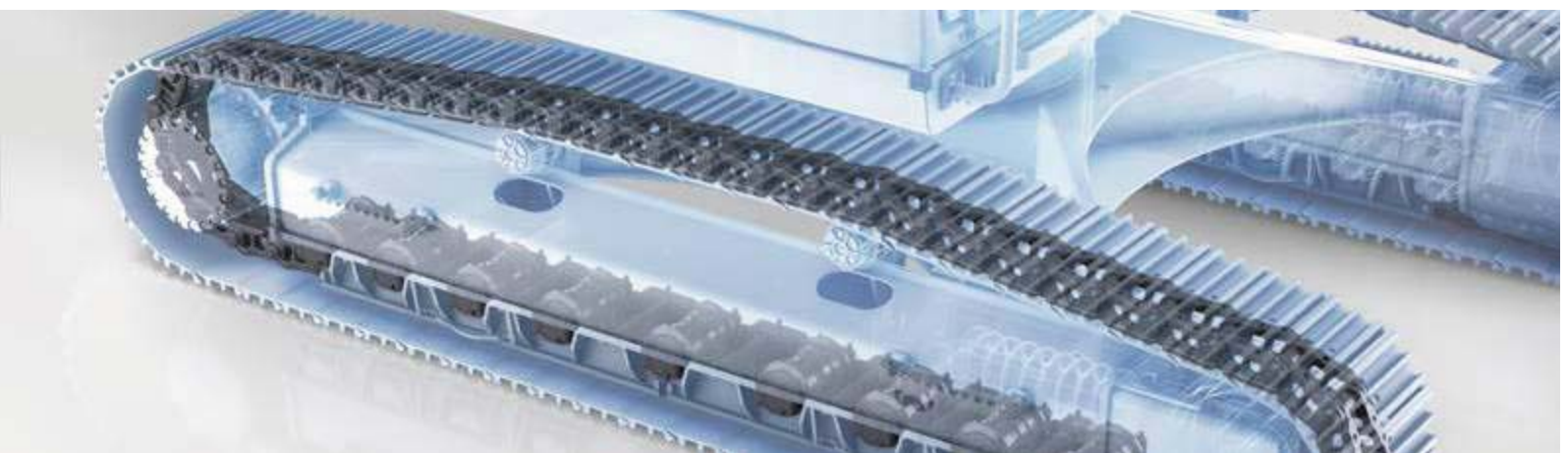
HD superstructure undercover plating

The optional heavy-duty superstructure undercover protects components within the superstructure. For increased durability, heavy-duty undercover plates provide additional protection to the underside of the machine in tough applications – preventing damage from rock and debris.



Re-enforced bucket linkage

A steel strip reinforces and supports the bucket linkage for added strength. It provides consistent long term durability even in the most severe applications.



Robust undercarriage

The reinforced idler frame, track links and bottom rollers are built to withstand tougher conditions for improved durability and reliability in demanding applications.

Robust track link

The machines feature reinforced track links for increased durability in tough applications.

Up your uptime.

At Volvo we believe that maintaining your machine should be as quick and easy as possible. That's why our designers and engineers have developed innovative methods to make maintenance easy. With large, wide opening compartment doors and grouped service points, checks will be carried out faster and you'll get the most out of every operating shift.

Handrails & bolted on anti-slip plates

Multiple handrails provide safe and easy access to the cab and superstructure. The bolted-on punched anti-slip plates provide superior grip and increased safety on board your machine.



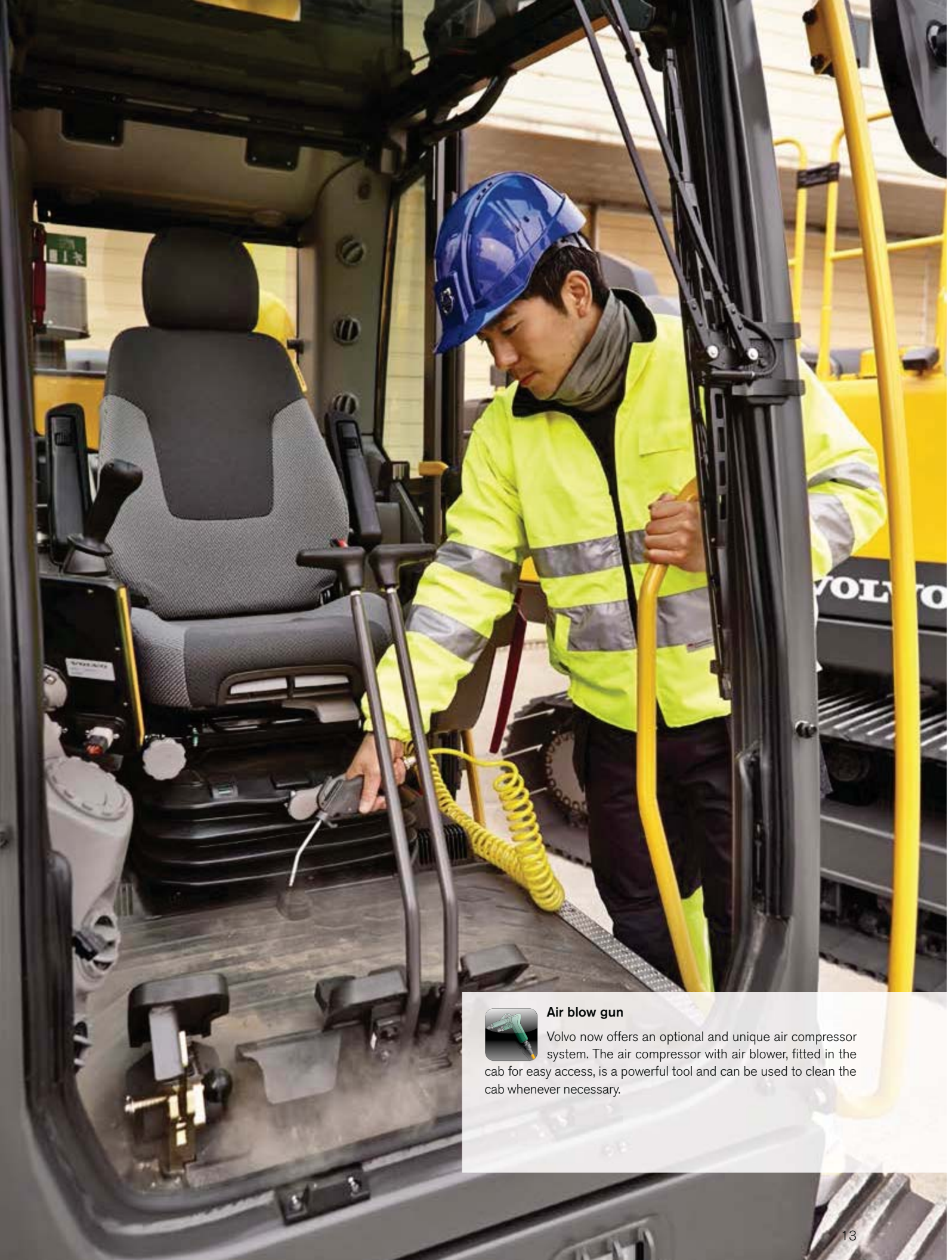
Sturdy doors and hinges

Volvo's design features rigid side doors with robust handles, hinges and locks for superior durability.



Tool box

The large tool box storage fitted on the right side is very convenient for daily maintenance.



Air blow gun

Volvo now offers an optional and unique air compressor system. The air compressor with air blower, fitted in the cab for easy access, is a powerful tool and can be used to clean the cab whenever necessary.

Mix and match for a superior fit.

Maximize your productivity and profitability with Volvo's EC250E/ EC300E crawler excavators and a range of durable attachments. Increase your versatility, access more applications and perform a variety of tasks – all while experiencing faster cycle times and excellent control.

Buckets – GP/HD/XD

Volvo's buckets are the perfect tool for digging and re-handling in all conditions from soft, medium and hard materials. Heavy-duty buckets are intended for productive digging in compact materials. All provide maximum productivity and long life and feature original Volvo wear components.



Breakers

The hydraulic breakers are optimized to the specific weights of Volvo machines and tailored to Volvo quick couplers for swift, safe and simple attachment changes. They are available with a full assortment of tools.



S-type quick coupler

The Volvo S-type quick coupler is designed to work with Volvo attachments – delivering ultimate compatibility and unrivalled performance.

Genuine Volvo wear parts

Volvo offers a selection of economic, replaceable wear parts including high quality teeth, segments, side cutters, adapters and shrouds to protect the bucket and ensure long life.



Universal quick coupler

The Volvo universal quick coupler offers maximum versatility. It picks up a variety of attachments from various manufacturers and meets new safety regulations.



Matched attachments

Volvo's durable attachments have been purpose-built to work in perfect harmony with Volvo machines, forming one solid, reliable unit. With functions and properties ideally matched, Volvo attachments are an integrated part of the excavator for which they're intended.

Optimize your options.



Eco mode

Volvo's unique ECO mode improves fuel efficiency without any loss of performance.



Proportional two-pump flow

The proportional two-pump flow makes it easier for the operator to improve the machine's controllability for a higher quality working finish. The ease of operation helps to get a quality job done quicker.

Booms and arms

To achieve the best performance, select the most suitable boom and arm configuration combination for your requirements.



Bolt-on wear plates

At the arm end where the most movement and wear occurs, Volvo provides wear plates which are easily replaced in a matter of hours in the field – a service that can't be matched by its competitors.



Matched attachments

Volvo's durable attachments have been purpose-built to work in perfect harmony with Volvo machines, forming one solid, reliable unit. With functions and properties ideally matched, Volvo attachments are an integrated part of the excavator for which they're intended.

Diesel Exhaust Fluid (DEF)

Volvo offers a total DEF solution that is quality assured, cost efficient and easily accessible. Contact your Volvo dealer for more information.

Demolition package

Volvo's factory fit demolition package offers ultimate protection for the machine.



**HMI**

All machine interfaces are ergonomically positioned and designed for optimum control and efficiency.

Bluetooth

Bluetooth multimedia and hands-free functions have been added, allowing the operator to connect to wireless functions for increased comfort and safety.

**Air blow gun**

Volvo now offers an optional and unique air compressor system. The air compressor with Air blow gun, fitted in the cab for easy access, is a powerful tool and can be used to clean the cab whenever necessary.

Automatic engine shutdown

E-Series excavators feature optional automatic engine shutdown for when the machine is idle for a pre-set period.

Handrails and anti-slip plates

Punched anti-slip plates and multiple handrails provide safe and easy access to the machine.

Robust track links

The excavators feature reinforced track links for improved durability in tough applications.

After treatment system

The automatic regeneration process takes place without interrupting machine operation, performance or productivity.



Adding value to your business.

Being a Volvo customer means having a complete set of services at your fingertips. Volvo can offer you a long-term partnership, protect your revenue and provide a full range of customer solutions using high quality parts, delivered by passionate people. Volvo is committed to the positive return of your investment.



Complete Solutions

Volvo has the right solution for you. So why not let us provide all your needs throughout the whole life cycle of

your machine? By listening to your requirements, we can reduce your total cost of ownership and increase your revenue.



Genuine Volvo Parts

Our attention to detail is what makes us stand out. This proven concept acts as a solid investment in your machine's future. Parts are extensively tested and approved because every part is vital for uptime and performance. Only by using Genuine Volvo Parts, can you be sure that your machine retains the renowned Volvo quality.



Service Network

In order to respond to your needs faster, a Volvo expert is on their way to your job site from one of our Volvo facilities. With our extensive infrastructure of technicians, workshops and dealers, Volvo has a comprehensive network to fully support you using local knowledge and global experience.



SERVICE PLAN

	DAY01	DAY02	DAY03	DAY04	DAY05	DAY06	DAY07
Task 1							✓
Task 2				✓	✓		
Task 3	✓						✓
Task 4			✓				✓
Task 5							✓
Task 6	✓						
Task 7			✓				
Task 8				✓			



Customer Support Agreements

The range of Customer Support Agreements offer preventive maintenance, total repairs and a number of uptime services. Volvo uses the latest technology to monitor machine operation and status, giving you advice to increase your profitability. By having a Customer Support Agreement you are in control of your service costs.

Volvo EC250E, EC300E in detail.

Engine

The latest generation, Volvo engine Tier 4f (Stage IV) emissions compliant diesel engine fully meets the demands of the latest, emissions regulations. Featuring Volvo Advanced Combustion Technology (V-ACT), it is designed to deliver superior performance and fuel efficiency. The engine uses precise, high pressure fuel injectors, turbo charger and air-to-air intercooler, and electronic engine controls to optimize machine performance.

Air Filter: 3-stage with pre-cleaner.

Automatic Idling System: Reduces engine speed to idle when the levers and pedals are not activated resulting in less fuel consumption and low cab noise levels.

EC250E

Engine Tier 4f (Stage IV)	Volvo	D8J	
Max power at	r/s / r/min	30 / 1,800	
Net, ISO 9249/SAE J1349	kW/hp	159 / 213	
Gross, ISO 14396/SAE J1995	kW/hp	160 / 215	
Max torque at	Nm / r/min	lb.ft	1 110 / 1,350
			819
No. of cylinders		6	
Displacement	l cu.in	7.8	473
Bore	mm in	110	4.33
Stroke	mm in	136	5.35

EC300E

Engine Tier 4f (Stage IV)	Volvo	30 / 1,800	
Max power at	r/s / r/min	179 / 240	
Net, ISO 9249/SAE J1349	kW / hp	180 / 241	
Gross, ISO 14396/SAE J1995	kW / hp	1 238 / 1,350	
Max torque at	Nm / r/min	lb.ft	1 238 / 1,350
			913
No. of cylinders		6	
Displacement	l cu.in	7.8	473
Bore	mm in	110	4.33
Stroke	mm in	136	5.35

Electrical system

High-capacity electrical system that is well protected. Waterproof double-lock harness plugs are used to secure corrosion-free connections. The main relays and solenoid valves are shielded to prevent damage. The master switch is standard. Contronics provides advanced monitoring of machine functions and important diagnostic information.

		EC250E	EC300E
Voltage	V	24	24
Batteries	V	2 x 12	2 x 12
Battery capacity	Ah	200	200
Alternator	V / Ah	28 / 80	28 / 110

Service refill capacities

		EC250E		EC300E	
Fuel tank	l gal	470	124	470	124
DEF tank	l gal	53	14	53	14
Hydraulic system, total	l gal	320	85	400	106
Hydraulic tank	l gal	207	55	207	55
Engine oil	l gal	32	8.5	32	8.5
Engine coolant	l gal	41	10.8	41	10.8
Swing reduction unit	l gal	5.9	1.6	6.1	1.6
Travel reduction unit	l gal	2 x 5.0	2 x 1.3	2 x 6	2x1.6

Swing system

The swing system uses an axial piston motors, driving a planetary gearbox for maximum torque. An automatic holding brake and anti-rebound valve are standard.

		EC250E	EC300E
Max. slew speed	r/min	11.9	10.7
Max. slew torque	kNm lb.ft	91.7 67,630	110.9 81,790

Drive

Each track is powered by an automatic two-speed shift travel motor. The track brakes are multi-disc, spring-applied and hydraulic released. The travel motor, brake and planetary gears are well protected within the track frame.

		EC250E	EC300E
Max. drawbar pull	kN lb	217 48,790	248 55,760
Max. travel speed	km/h mph	3.5/5.5 2.2/3.4	3.4/5.4 2.1/3.4
Gradeability	°	35	35

Undercarriage

The undercarriage has a robust X-shaped frame. Greased and sealed track chains are standard.

		EC250E		EC300E	
Track pads		2 x 51		2 x 50	
Link pitch	mm in	190	7.5	203	8.0
Shoe width, triple grouser	mm in	600 /	24 /	600 /	24 /
		700 /	28 /	700 /	28 /
		800 /	32 /	800 /	32 /
		900	36	900	36
Shoe width, triple grouser (HD)	mm in	600	24	600	24
Shoe width, double grouser	mm in	600 / 700	24 / 28	700	28
Bottom rollers		2 x 9		2 x 9	
Top rollers		2 x 2		2 x 2	

Hydraulic system

The hydraulic system, also known as the "Automatic Sensing Work Mode," is designed for high-productivity, high-digging capacity, high-maneuvering precision and excellent fuel economy. The summation system, boom, arm and swing priority along with boom, arm and bucket regeneration provides optimum performance.

The following important functions are included in the system:
Summation system: Combines the flow of both hydraulic pumps to ensure quick cycle times and high productivity.

Boom priority: Gives priority to the boom operation for faster raising when loading or performing deep excavations.

Arm priority: Gives priority to the arm operation for faster cycle times in leveling and for increased bucket filling when digging.

Swing priority: Gives priority to swing functions for faster simultaneous operations.

Regeneration system: Prevents cavitation and provides flow to other movements during simultaneous operations for maximum productivity.

Power boost: All digging and lifting forces are increased.

Holding valves: Boom and arm holding valves prevent the digging equipment from creeping.

	EC250E	EC300E
Main pump, Type 2 x variable displacement axial piston pumps		
Maximum flow	l/ min gal/ min	2 x 63 2 x 69
Pilot pump, Type Gear pump		
Maximum flow	l/ min gal/ min	18 4.8 18 4.8

Hydraulic motors

	EC250E	EC300E
Travel: Variable displacement axial piston motor with mechanical brake		
Slew: Fixed displacement axial piston motor with mechanical brake		
Relief valve setting		
Implement	MPa psi	33.3/ 4,840/ 36.3 5,260
Travel circuit	MPa psi	36.3 5,260 36.3 5,260
Slew circuit	MPa psi	27.9 4,050 27.9 4,050
Pilot circuit	MPa psi	3.9 570 3.9 570

Hydraulic cylinders

	EC250E	EC300E
Mono boom		
Bore x Stroke	135 x 5.3 x 1 345 53	140 x 5.5 x 1 480 58.3
2 piece boom		
Bore x Stroke	160 x 6.3 x 1 230 48	170 x 6.7 x 1 300 51
Arm		
Bore x Stroke	140 x 5.5 x 1 665 65.6	150 x 5.9 x 1 745 68.7
Bucket		
Bore x Stroke	130 x 5.1 x 1 150 45.3	140 x 5.5 x 1 140 44.9
Bucket for LR		
Bore x Stroke	100 x 3.9 x 865 34.1	100 x 3.9 x 865 34.1

Cab

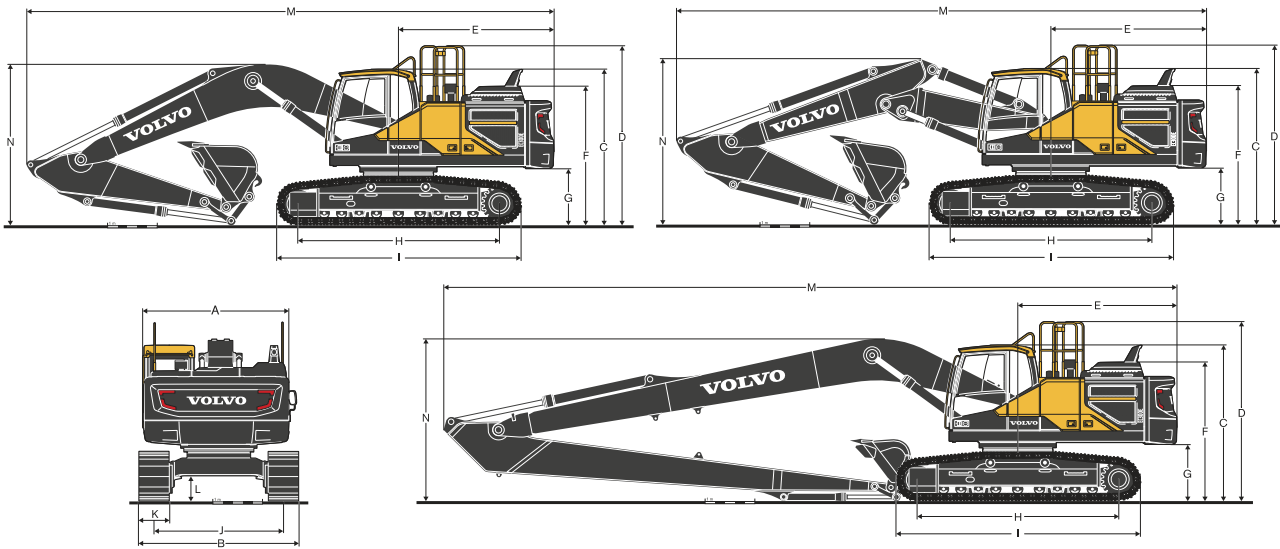
The operator's cab has easy access via a wide door opening. The cab is supported on hydraulic dampening mounts to reduce shock and vibration levels. These along with sound absorbing lining provide low noise levels. The cab has excellent all-round visibility. The front windshield can easily slide up into the ceiling, and the lower front glass can be removed and stored in the side door. Integrated air-conditioning and heating system: The pressurized and filtered cab air is supplied by an automatically-controlled fan. The air is distributed throughout the cab from 14 vents. Ergonomic operator's seat: The adjustable seat and joystick console move independently to accommodate the operator. The seat has nine different adjustments plus a seat belt for the operator's comfort and safety.

Sound Level

	EC250E	EC300E
Sound level in cab according to ISO 6396		
LpA (standard)	dB(A)	70 70
LpA (tropical)	dB(A)	71 71
External sound level according to ISO 6395 and EU Noise Directive (2000/14/EC) and 474-1:2006 +A1:2009		
LwA (standard)	dB(A)	103 104
LwA (tropical)	dB(A)	104 105

Specifications.

DIMENSIONS

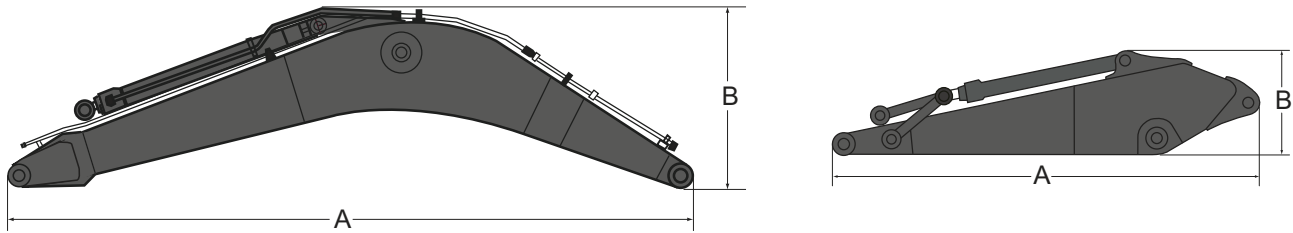


Description	Unit	EC250EL						EC250ELR	
		6, 19' 8" mono or 5.95, 19' 6" 2-piece						10.2, 33' 6"	
Boom	m, ft in								
Arm	m, ft in	2.5	8' 2"	2.97	9' 9"	3.6	11' 10"	7.85	25' 9"
A. Overall width of upper structure	mm ft in	2 890	9' 6"	2 890	9' 6"	2 890	9' 6"	2 890	9' 6"
B. Overall width	mm ft in	3 190	10' 6"	3 190	10' 6"	3 190	10' 6"	3 190	10' 6"
C. Overall height of cab	mm ft in	3 050	10' 1"	3 050	10' 1"	3 050	10' 1"	3 050	10' 1"
D. Overall height of guard rail	mm ft in	3 510	11' 7"	3 510	11' 7"	3 510	11' 7"	3 510	11' 7"
E. Tail swing radius	mm ft in	3 070	10' 1"	3 070	10' 1"	3 070	10' 1"	3 150	10' 5"
F. Overall height of engine hood	mm ft in	2 710	8' 11"	2 710	8' 11"	2 710	8' 11"	2 710	8' 11"
G. Counterweight clearance*	mm ft in	1 040	3' 5"	1 040	3' 5"	1 040	3' 5"	1 040	3' 5"
H. Tumbler length	mm ft in	3 850	12' 8"	3 850	12' 8"	3 850	12' 8"	3 850	12' 8"
I. Track length	mm ft in	4 650	15' 4"	4 650	15' 4"	4 650	15' 4"	4 650	15' 4"
J. Track gauge	mm ft in	2 590	8' 6"	2 590	8' 6"	2 590	8' 6"	2 590	8' 6"
K. Shoe width	mm ft in	600	24"	600	24"	600	24"	600	24"
L. Min. ground clearance*	mm ft in	470	1' 7"	470	1' 7"	470	1' 7"	470	1' 7"
M. Overall length	mm ft in	10 310	33' 10"	10 230	33' 7"	10 300	33' 10"	14 520	47' 8"
M ¹ . Overall length	mm ft in	10 260	33' 8"	10 230	33' 7"	10 230	33' 7"	-	-
N. Overall height of boom	mm ft in	3 330	11' 0"	3 110	10' 3"	3 330	11' 0"	3 080	10' 2"
N ¹ . Overall height of boom	mm ft in	3 260	10' 9"	3 180	10' 6"	3 410	11' 3"	-	-
Description	Unit	EC300EL						EC300ELR	
Boom	m, ft in	6.2, 20' 4" mono or 6.2, 20' 4" 2-piece						10.2, 33' 6"	
Arm	m, ft in	2.55	8' 4"	3.05	10' 0"	3.7	12' 2"	7.9	25' 11"
A. Overall width of upper structure	mm ft in	2 890	9' 6"	2 890	9' 6"	2 890	9' 6"	2 890	9' 6"
B. Overall width	mm ft in	3 190	10' 6"	3 190	10' 6"	3 190	10' 6"	3 190	10' 6"
C. Overall height of cab	mm ft in	3 110	10' 3"	3 110	10' 3"	3 110	10' 3"	3 110	10' 3"
D. Overall height of guard rail	mm ft in	3 570	11' 9"	3 570	11' 9"	3 570	11' 9"	3 570	11' 9"
E. Tail swing radius	mm ft in	3 120	10' 3"	3 120	10' 3"	3 120	10' 3"	3 200	10' 6"
F. Overall height of engine hood	mm ft in	2 770	9' 2"	2 770	9' 2"	2 770	9' 2"	2 770	9' 2"
G. Counterweight clearance*	mm ft in	1 100	3' 8"	1 100	3' 8"	1 100	3' 8"	1 100	3' 8"
H. Tumbler length	mm ft in	4 015	13' 3"	4 015	13' 3"	4 015	13' 3"	4 015	13' 3"
I. Track length	mm ft in	4 870	16' 0"	4 870	16' 0"	4 870	16' 0"	4 870	16' 0"
J. Track gauge	mm ft in	2 590	8' 6"	2 590	8' 6"	2 590	8' 6"	2 590	8' 6"
K. Shoe width	mm ft in	600	24"	600	24"	600	24"	600	24"
L. Min. ground clearance*	mm ft in	480	1' 7"	480	1' 7"	480	1' 7"	480	1' 7"
M. Overall length	mm ft in	10 610	34' 10"	10 510	34' 6"	10 550	34' 8"	14 610	48' 0"
M ¹ . Overall length	mm ft in	10 600	34' 10"	10 540	34' 7"	10 540	34' 7"	-	-
N. Overall height of boom	mm ft in	3 480	11' 6"	3 350	11' 0"	3 580	11' 9"	3 230	10' 8"
N ¹ . Overall height of boom	mm ft in	3 360	11' 1"	3 300	10' 10"	3 530	11' 7"	-	-

* Without shoe grouser ¹ 2-piece boom

DIMENSIONS

Boom	Arm
-------------	------------



EC250E

Description	Unit		mono		mono		2-piece		Long-Reach		mono	
	m	in	6.0 GP	19' 8"	6.0 HD	19' 8"	5.95	19' 6"	10.2	33' 6"	6.2 GP	20' 4"
Length	mm	in	6 210	20' 4"	6 210	20' 4"	6 160	20' 3"	10 410	34' 2"	6 430	21' 1"
Height	mm	in	1 630	5' 4"	1 630	5' 4"	1 100	3' 7"	1 525	5' 0"	1 680	5' 6"
Width	mm	in	740	2' 5"	740	2' 5"	740	2' 5"	740	2' 5"	770	2' 6"
Weight	kg	lb	2 180	4,810	2 360	5,200	2 840	6,260	3 010	6,640	2 610	5,760

EC300E

Description	Unit		mono		2-piece		Long-Reach	
	m	in	6.2 HD	20' 4"	6.2	20' 4"	10.2	33' 6"
Length	mm	in	6 430	21' 1"	6 430	21' 1"	10 430	34' 3"
Height	mm	in	1 680	5' 6"	1 590	5' 3"	1 620	5' 4"
Width	mm	in	770	2' 6"	770	2' 6"	770	2' 6"
Weight	kg	lb	2 810	6,200	3 450	7,610	3 410	7,520

* Includes cylinder, piping and pin, excludes boom cylinder pin

Description	Unit		EC250E									
	m	in	2.5 HD	8' 2"	2.97 GP	9' 9"	2.97 HD	9' 9"	3.6 GP	11' 10"	7.85 LR	25' 9"
Length	mm	in	3 590	11' 9"	4 060	13' 4"	4 060	13' 4"	4 730	15' 6"	9 000	29' 6"
Height	mm	in	1 000	3' 3"	1 000	3' 3"	1 000	3' 3"	1 000	3' 3"	900	2' 11"
Width	mm	in	500	1' 8"	500	1' 8"	500	1' 8"	500	1' 8"	480	1' 7"
Weight	kg	lb	1 360	3,000	1 340	2,950	1 430	3,150	1 470	3,240	1 720	3,790

EC300E

Description	Unit		EC300E									
	m	in	2.55 HD	8' 4"	3.05 GP	10' 0"	3.05 HD	10' 0"	3.7 GP	12' 2"	7.9 LR	25' 11"
Length	mm	in	3 710	12' 2"	4 150	13' 7"	4 150	13' 7"	4 800	15' 9"	9 050	29' 8"
Height	mm	in	1 010	3' 4"	1 010	3' 4"	1 010	3' 4"	1 050	3' 5"	1 050	3' 5"
Width	mm	in	545	1' 9"	545	1' 9"	545	1' 9"	545	1' 9"	450	1' 6"
Weight	kg	lb	1 530	3,370	1 530	3,370	1 590	3,510	1 660	3,660	1 730	3,810

* Includes cylinder, linkage and pin

Specifications.

WORKING RANGES

Description	Unit	EC250EL						EC250ELR	
		6.0, 19' 8"						10.2, 33' 6"	
Boom	m, ft in								
Arm	m ft in	2.5	8' 2"	2.97	9' 9"	3.6	11' 10"	7.85	25' 9"
A. Max. digging reach	mm ft in	9 960	32' 9"	10 340	34' 0"	10 810	35' 6"	18 300	60' 1"
B. Max. digging reach on ground	mm ft in	9 770	32' 1"	10 160	33' 4"	10 640	34' 11"	18 200	59' 9"
C. Max. digging depth	mm ft in	6 590	21' 8"	7 060	23' 2"	7 690	25' 3"	14 350	47' 1"
D. Max. digging depth (2.44 m level)	mm ft in	6 370	20' 11"	6 850	22' 6"	7 470	24' 7"	14 230	46' 9"
E. Max. vertical wall digging depth	mm ft in	5 800	19' 1"	6 070	19' 11"	6 390	21' 0"	12 930	42' 6"
F. Max. cutting height	mm ft in	9 620	31' 7"	9 690	31' 10"	9 650	31' 8"	14 890	48' 11"
G. Max. dumping height	mm ft in	6 610	21' 9"	6 710	22' 1"	6 730	22' 1"	12 580	41' 4"
H. Min. front swing radius	mm ft in	3 910	12' 10"	3 890	12' 10"	3 890	12' 10"	5 720	18' 10"

DIGGING FORCES WITH DIRECT FIT BUCKET

Bucket radius		mm	ft in	1 537	5' 1"	1 537	5' 1"	1 537	5' 1"	1 537	5' 1"
Breakout force - bucket	Normal	SAE J1179	kN lb	152	34,270	152	34,270	152	34,270	68.6	15,440
	Power boost	SAE J1179	kN lb	166	37,290	166	37,290	166	37,290	-	-
	Normal	ISO 6015	kN lb	171	38,430	171	38,430	171	38,430	77.8	17,490
	Power boost	ISO 6015	kN lb	186	41,810	186	41,810	186	41,810	-	-
Tearout force - dipper arm	Normal	SAE J1179	kN lb	133	29,940	115	25,890	103	23,130	44.1	9,920
	Power boost	SAE J1179	kN lb	145	32,590	125	28,180	112	25,170	-	-
	Normal	ISO 6015	kN lb	137	30,850	118	26,550	105	23,640	44.7	10,050
	Power boost	ISO 6015	kN lb	149	33,560	129	28,890	114	25,720	-	-
Rotation angle, bucket		°		178		178		178		178	

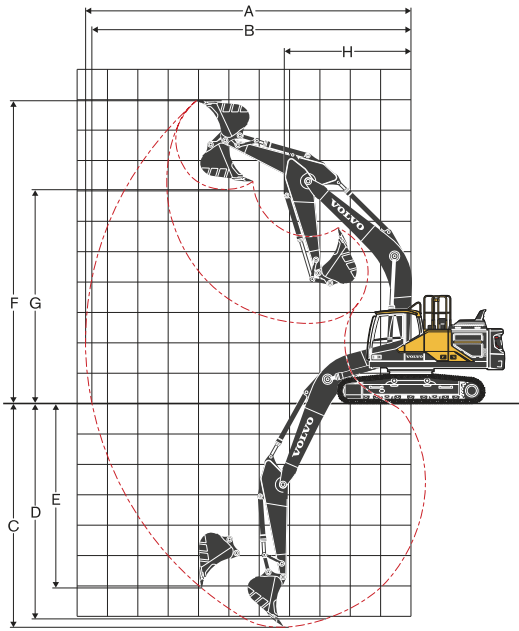
WORKING RANGES

Description	Unit	EC300EL						EC300ELR	
		6.2, 20' 4"						10.2, 33' 6"	
Boom	m, ft in								
Arm	m ft in	2.55	8' 4"	3.05	10' 0"	3.7	12' 2"	7.9	25' 11"
A. Max. digging reach	mm ft in	10 180	33' 5"	10 710	35' 2"	11 310	37' 2"	18 590	61' 0"
B. Max. digging reach on ground	mm ft in	9 970	32' 9"	10 520	34' 7"	11 130	36' 7"	18 480	60' 8"
C. Max. digging depth	mm ft in	6 840	22' 6"	7 340	24' 1"	7 990	26' 3"	14 750	48' 5"
D. Max. digging depth (2.44 m level)	mm ft in	6 600	21' 8"	7 150	23' 6"	7 830	25' 9"	14 650	48' 1"
E. Max. vertical wall digging depth	mm ft in	9 560	31' 5"	9 980	32' 9"	10 260	33' 8"	14 940	49' 1"
F. Max. cutting height	mm ft in	6 680	21' 11"	7 040	23' 2"	7 330	24' 1"	12 600	41' 5"
G. Max. dumping height	mm ft in	5 320	17' 6"	6 080	20' 0"	6 680	21' 11"	13 630	44' 9"
H. Min. front swing radius	mm ft in	4 220	13' 11"	4 180	13' 9"	4 240	13' 11"	6 190	20' 4"

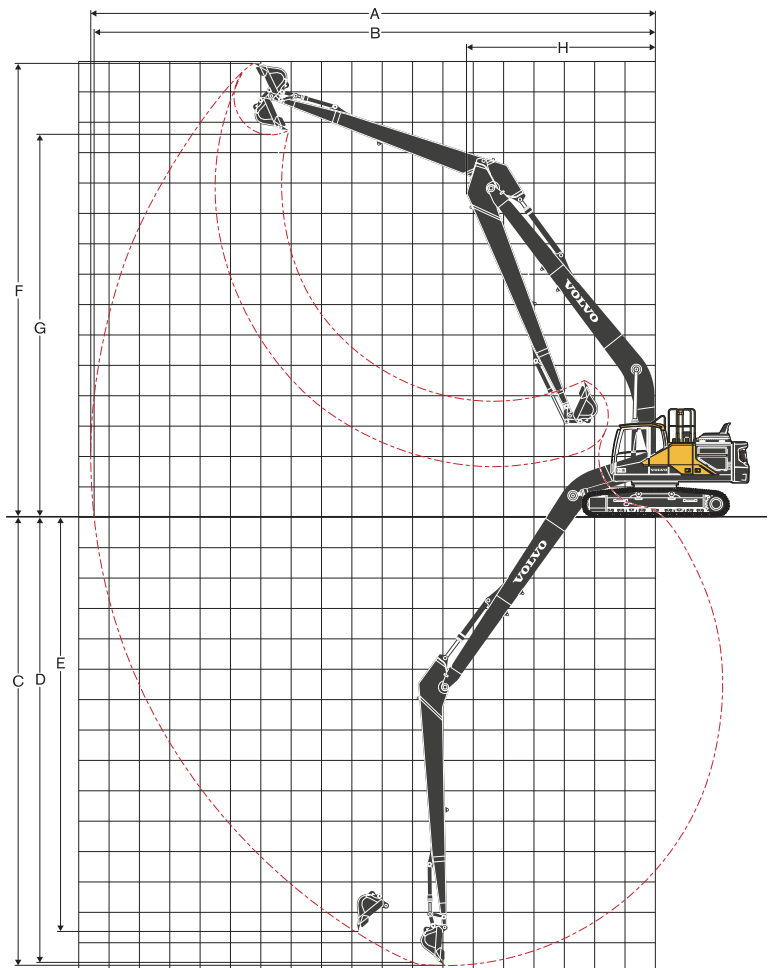
DIGGING FORCES WITH DIRECT FIT BUCKET

Bucket radius		mm	ft in	1 600	5' 3"	1 600	5' 3"	1 600	5' 3"	1 600	5' 3"
Breakout force - bucket	Normal	SAE J1179	kN lb	168	37,660	168	37,660	168	37,660	69.1	15,520
	Power boost	SAE J1179	kN lb	182	40,970	182	40,970	182	40,970	-	-
	Normal	ISO 6015	kN lb	188	42,250	188	42,250	188	42,250	80.3	18,060
	Power boost	ISO 6015	kN lb	205	45,970	205	45,970	205	45,970	-	-
Tearout force - dipper arm	Normal	SAE J1179	kN lb	157	35,210	132	29,570	115	25,890	51.3	11,530
	Power boost	SAE J1179	kN lb	170	38,320	143	32,170	125	28,180	-	-
	Normal	ISO 6015	kN lb	161	36,250	135	30,300	118	26,420	51.8	11,640
	Power boost	ISO 6015	kN lb	176	39,450	147	32,960	128	28,750	-	-
Rotation angle, bucket		°		179		179		179		179	

Machine with mono boom



Machine Long-Reach boom



Specifications.

GROUND PRESSURE

EC250E

Description	Shoe width		Operating weight		Ground pressure		Overall width		Operating weight		Ground pressure		Overall width	
	mm	in	kg	lb	kPa	psi	mm	in	kg	lb	kPa	psi	mm	in
Triple grouser	600	24	25 590	56,430	50.6	7.3	3 190	10' 6"	25 760	56,800	50.9	7.4	3 190	10' 6"
	700	28	25 890	57,090	43.8	6.4	3 290	10' 10"	26 070	57,480	44.1	6.4	3 290	10' 10"
	800	32	26 190	57,750	38.8	5.6	3 390	11' 1"	26 360	58,120	39.1	5.7	3 390	11' 1"
	900	36	26 490	58,410	34.9	5.1	3 490	11' 5"	26 670	58,810	35.1	5.1	3 490	11' 5"
Triple grouser(HD)	600	24	25 820	56,930	51.0	7.4	3 190	10' 6"	26 000	57,330	51.4	7.4	3 190	10' 6"
Double grouser	600	24	25 820	56,930	51.0	7.4	3 290	10' 10"	25 990	57,310	51.3	7.4	3 290	10' 10"
	700	28	26 160	57,680	44.3	6.4	3 290	10' 10"	26 340	58,080	44.6	6.5	3 290	10' 10"
EC250E with L undercarriage, 6.0m (19' 8") boom, 2.97m (9' 9") arm, 1 197kg (2,640lb) bucket, 4 250kg (9,370lb) counterweight														
EC250E with L undercarriage, 6.0m (19' 8") HD boom, 2.97m (9' 9") HD arm, 1 197kg (2,640lb) bucket, 4 250kg (9,370lb) counterweight														
Triple grouser	600	24	26 180	57,730	51.7	7.5	3 190	10' 6"	26 290	57,970	51.9	7.5	3 190	10' 6"
	700	28	26 480	58,390	44.8	6.5	3 290	10' 10"	26 590	58,630	45.0	6.5	3 290	10' 10"
	800	32	26 780	59,050	39.7	5.8	3 390	11' 1"	26 890	59,290	39.8	5.8	3 390	11' 1"
	900	36	27 090	59,730	35.7	5.2	3 490	11' 5"	27 190	59,950	35.8	5.2	3 490	11' 5"
Triple grouser(HD)	600	24	26 420	58,260	52.2	7.6	3 190	10' 6"	26 520	58,480	52.4	7.6	3 190	10' 6"
Double grouser	600	24	26 410	58,230	52.2	7.6	3 290	10' 10"	26 520	58,480	52.4	7.6	3 290	10' 10"
	700	28	26 750	58,980	45.3	6.6	3 290	10' 10"	26 860	59,230	45.5	6.6	3 290	10' 10"
EC250E with L undercarriage, 5.95m (19' 6") 2-piece boom, 2.97m (9' 9") arm, 1 197kg (2,640lb) bucket, 4 250kg (9,370lb) counterweight														
EC250E with L undercarriage, 6.0m (19' 8") boom, 2.97m (9' 9") arm, 1 197kg (2,640lb) bucket, 4 950kg (10,910lb) counterweight														
Triple grouser	600	24	26 460	58,340	52.3	7.6	3 190	10' 6"	26 880	59,270	53.1	7.7	3 190	10' 6"
	700	28	26 770	59,030	45.3	6.6	3 290	10' 10"	27 180	59,930	46.0	6.7	3 290	10' 10"
	800	32	27 060	59,670	40.1	5.8	3 390	11' 1"	27 480	60,590	40.7	5.9	3 390	11' 1"
	900	36	27 370	60,350	36.0	5.2	3 490	11' 5"	27 790	61,280	36.6	5.3	3 490	11' 5"
Triple grouser(HD)	600	24	26 700	58,870	52.7	7.6	3 190	10' 6"	27 120	59,800	53.6	7.8	3 190	10' 6"
Double grouser	600	24	26 690	58,850	52.7	7.6	3 290	10' 10"	27 110	59,780	53.6	7.8	3 290	10' 10"
	700	28	27 040	59,620	45.8	6.6	3 290	10' 10"	27 450	60,530	46.5	6.7	3 290	10' 10"
EC250E with L undercarriage, 6.0m (19' 8") HD boom, 2.97m (9' 9") HD arm, 1 197kg (2,640lb) bucket, 4 950kg (10,910lb) counterweight														
EC250E with L undercarriage, 5.95m (19' 6") 2-piece boom, 2.97m (9' 9") arm, 1 197kg (2,640lb) bucket, 4 950kg (10,910lb) counterweight														
Triple grouser	600	24	28 030	61,810	56.5	8.0	3 190	10' 6"						
	800	32	28 630	63,130	43.3	6.2	3 390	11' 1"						
	900	36	28 930	63,790	38.9	5.5	3 490	11' 5"						
	Triple grouser(HD)	600	24	28 270	62,340	55.8	8.1	3 190	10' 6"					
EC250E with LR undercarriage, 10.2m (33' 6") LR boom, 7.85m (25' 9") LR arm, 454kg (1,000lb) bucket, 6 200kg (13,670lb) counterweight														

EC300E

Description	Shoe width		Operating weight		Ground pressure		Overall width		Operating weight		Ground pressure		Overall width	
	mm	in	kg	lb	kPa	psi	mm	in	kg	lb	kPa	psi	mm	in
Triple grouser	600	24	29 350	64,720	56.6	8.2	3 190	10' 6"	29 650	65,380	57.2	8.3	3 190	10' 6"
	700	28	29 910	65,950	49.5	7.2	3 290	10' 10"	30 210	66,610	50.0	7.2	3 290	10' 10"
	800	32	30 290	66,790	43.8	6.4	3 390	11' 1"	30 590	67,450	44.3	6.4	3 390	11' 1"
	900	36	30 660	67,610	39.4	5.7	3 490	11' 5"	30 960	68,270	39.8	5.8	3 490	11' 5"
Triple grouser(HD)	600	24	29 550	65,160	57.0	8.3	3 190	10' 6"	29 850	65,820	57.6	8.3	3 190	10' 6"
Double grouser	600	24	30 060	66,280	49.7	7.2	3 290	10' 10"	30 360	66,940	50.2	7.3	3 290	10' 10"
	EC300E with L undercarriage, 6.2m (20' 4") boom, 3.05m (10' 0") arm, 1 320kg (2,910lb) bucket, 5 100kg (11,250lb) counterweight													
EC300E with L undercarriage, 6.2m (20' 4") HD boom, 3.05m (10' 0") HD arm, 1 320kg (2,910lb) bucket, 5 100kg (11,250lb) counterweight														
Triple grouser	600	24	30 230	66,660	58.3	8.5	3 190	10' 6"	29 750	65,600	57.4	8.3	3 190	10' 6"
	700	28	30 790	67,890	50.9	7.4	3 290	10' 10"	30 310	66,830	50.1	7.3	3 290	10' 10"
	800	32	31 170	68,730	45.1	6.5	3 390	11' 1"	30 690	67,670	44.4	6.4	3 390	11' 1"
	900	36	31 540	69,550	40.6	5.9	3 490	11' 5"	31 060	68,490	39.9	5.8	3 490	11' 5"
Triple grouser(HD)	600	24	30 430	67,100	58.7	8.5	3 190	10' 6"	29 950	66,040	57.8	8.4	3 190	10' 6"
Double grouser	600	24	30 940	68,220	51.2	7.4	3 290	10' 10"	30 460	67,160	50.4	7.3	3 290	10' 10"
	EC300E with L undercarriage, 6.2m (20' 4") 2-piece boom, 3.05m (10' 0") arm, 1 320kg (2,910lb) bucket, 5 500kg (12,130lb) counterweight													
EC300E with L undercarriage, 6.2m (20' 4") boom, 3.05m (10' 0") arm, 1 320kg (2,910lb) bucket, 5 500kg (12,130lb) counterweight														
Triple grouser	600	24	30 050	66,260	58.0	8.4	3 190	10' 6"	30 630	67,540	59.1	8.6	3 190	10' 6"
	700	28	30 610	67,500	50.6	7.3	3 290	10' 10"	31 190	68,770	51.6	7.5	3 290	10' 10"
	800	32	30 990	68,330	44.8	6.5	3 390	11' 1"	31 570	69,610	45.7	6.6	3 390	11' 1"
	900	36	31 360	69,150	40.3	5.8	3 490	11' 5"	31 940	70,430	41.1	6.0	3 490	11' 5"
Triple grouser(HD)	600	24	30 250	66,700	58.4	8.5	3 190	10' 6"	30 830	67,980	59.5	8.6	3 190	10' 6"
Double grouser	600	24	30 760	67,830	50.9	7.4	3 290	10' 10"	31 340	69,100	51.8	7.5	3 290	10' 10"
	EC300E with L undercarriage, 6.2m (20' 4") HD boom, 3.05m (10' 0") HD arm, 1 320kg (2,910lb) bucket, 5 500kg (12,130lb) counterweight													
EC300E with L undercarriage, 6.2m (20' 4") 2-piece boom, 3.05m (10' 0") arm, 1 320kg (2,910lb) bucket, 5 500kg (12,130lb) counterweight														
Triple grouser	600	24	31 470	69,390	60.7	8.8	3 190	10' 6"						
	800	32	32 400	71,440	46.9	6.8	3 390	11' 1"						
	900	36	32 770	72,260	42.1	6.1	3 490	11' 5"						
	Triple grouser(HD)	600	24	31 670	69,830	61.1	8.9	3 290	10' 10"					
EC300E with LR undercarriage, 10.2m (33' 6") LR boom, 7.9m (25' 11") LR arm, 473kg (1,040lb) bucket, 6 800kg (14,990lb) counterweight														

BUCKET SELECTION GUIDE

Bucket type		Capacity		Cutting width		Weight		Teeth	EC250EL					
									6.0m (19' 8") GP Boom			6.0m (19' 8") HD Boom		
		600mm (24") shoe, 4 950kg (10,910lb) counterweight												
		m ³	yd ³	mm	ft/in	kg	lb	EA	H2.5m (8' 2")	G2.97m (9' 9")	G3.6m (11' 10")	H2.5m (8' 2")	G2.97m (9' 9")	G3.6m (11' 10")
Direct fit Buckets	General purpose	0.56	0.73	600	24	861	1,899	3	C	C	C	C	C	C
		0.62	0.81	750	30	884	1,950	3	C	C	C	C	C	C
		0.77	1.01	900	36	986	2,174	4	C	C	C	C	C	C
		1.14	1.49	1 200	47	1 177	2,595	5	C	C	C	C	C	C
		1.32	1.73	1 350	53	1 257	2,772	5	C	C	C	C	C	C
		1.51	1.98	1 500	59	1 356	2,990	5	C	C	C	C	C	B
		0.56	0.73	600	24	936	2,065	3	D	D	D	D	D	D
	Heavy duty	0.62	0.81	750	30	967	2,131	3	D	D	D	D	D	D
		1.14	1.49	1 200	47	1 298	2,862	5	D	D	D	D	D	D
		1.32	1.73	1 350	53	1 384	3,051	5	D	D	D	D	D	D
		1.51	1.98	1 500	59	1 480	3,264	5	D	C	B	D	C	B
		1.51	1.98	1 500	59	1 455	3,208	5	D	C	B	D	C	B
											EC250EL			
											5.95m (19' 6") 2-piece Boom			
									600mm (24") shoe, 4 950kg (10,910lb) counterweight					
		m ³	yd ³	mm	ft/in	kg	lb	EA	H2.5m (8' 2")		G2.97m (9' 9")		G3.6m (11' 10")	
Direct fit Buckets	General purpose	0.56	0.73	600	24	861	1,899	3	C	C	C	C	C	
		0.62	0.81	750	30	884	1,950	3	C	C	C	C	C	
		0.77	1.01	900	36	986	2,174	4	C	C	C	C	C	
		1.14	1.49	1 200	47	1 177	2,595	5	C	C	C	C	C	
		1.32	1.73	1 350	53	1 257	2,772	5	C	C	C	C	C	
		1.51	1.98	1 500	59	1 356	2,990	5	C	C	C	C	B	
		0.56	0.73	600	24	936	2,065	3	D	D	D	D	D	D
	Heavy duty	0.62	0.81	750	30	967	2,131	3	D	D	D	D	D	D
		1.14	1.49	1 200	47	1 298	2,862	5	D	D	D	D	D	D
		1.32	1.73	1 350	53	1 384	3,051	5	D	D	D	D	C	C
		1.51	1.98	1 500	59	1 480	3,264	5	D	D	C	C	B	B
		1.51	1.98	1 500	59	1 455	3,208	5	D	D	C	C	B	B
											EC300EL			
											6.2m (20' 4") GP Boom		6.2m (20' 4") HD Boom	
									600mm (24") shoe, 5 500kg (12,125lb) counterweight					
		m ³	yd ³	mm	ft/in	kg	lb	EA	H2.55m (8' 4")		G3.05m (10' 0")		G3.7m (12' 2")	
Direct fit Buckets	General purpose	0.55	0.72	600	23	881	1,942	3	D	D	D	D	D	D
		0.66	0.86	750	29	927	2,045	3	D	D	D	D	D	D
		0.77	1.01	900	35	996	2,195	4	D	D	D	D	D	D
		1.14	1.49	1 200	47	1 187	2,617	5	D	D	D	D	D	D
		1.32	1.73	1 350	53	1 267	2,794	5	D	D	D	D	D	D
		1.51	1.98	1 500	59	1 365	3,010	5	D	D	B	D	D	C
		0.55	0.72	600	23	954	2,103	3	D	D	D	D	D	D
	Heavy duty	0.66	0.86	750	29	1 011	2,229	3	D	D	D	D	D	D
		1.14	1.49	1 200	47	1 305	2,878	5	D	D	D	D	D	D
		1.32	1.73	1 350	53	1 392	3,069	5	D	D	D	D	D	D
		1.51	1.98	1 500	59	1 488	3,280	5	D	C	B	D	D	B
											EC300EL			
											6.0m (19' 8") GP Boom			
											600mm (24") shoe, 5 500kg (12,125lb) counterweight			
		m ³	yd ³	mm	ft/in	kg	lb	EA	H2.55m (8' 4")		G3.05m (10' 0")		G3.7m (12' 2")	
Direct fit Buckets	General purpose	0.55	0.72	600	23	881	1,942	3	D	D	D	D	D	D
		0.66	0.86	750	29	927	2,045	3	D	D	D	D	D	D
		0.77	1.01	900	35	996	2,195	4	D	D	D	D	D	D
		1.14	1.49	1 200	47	1 187	2,617	5	D	D	D	D	D	D
		1.32	1.73	1 350	53	1 267	2,794	5	D	D	D	D	D	D
		1.51	1.98	1 500	59	1 365	3,010	5	D	D	C	D	D	B
		0.55	0.72	600	23	954	2,103	3	D	D	D	D	D	D
	Heavy duty	0.66	0.86	750	29	1 011	2,229	3	D	D	D	D	D	D
		1.14	1.49	1 200	47	1 305	2,878	5	D	D	D	D	D	D
		1.32	1.73	1 350	53	1 392	3,069	5	D	D	D	D	D	C
		1.51	1.98	1 500	59	1 488	3,280	5	D	D	C	D	D	B

*For long reach boom and arm configuration, Volvo recommends to use 0.52cum (0.68yd³) bucket for EC250E and 0.57cum (0.75 yd³) bucket for EC300E.

Please consult with your Volvo dealer for the proper match of buckets and attachments to suit the application.

The recommendations are given as a guide only, based on typical operation conditions.

Bucket capacity based on ISO 7451, heaped material with a 1:1 angle of repose.

X : Not recommended

Maximum material density

	kg/m ³	lb/yd ³	
A	1 200 - 1 300	2,000 - 2,200	Coal, Caliche, Shale
B	1 400 - 1 600	2,300 - 2,700	Wet earth and clay, Limestone, Sandstone
C	1 700 - 1 800	2,800 - 3,100	Granite, Wet sand, Well blasted rock
D	> 1 900	> 3,200	Wet mud, Iron ore

Equipment.

STANDARD EQUIPMENT

	EC250E	EC300E
Engine		
Turbocharged, 4 stroke diesel engine with water cooling, direct injection and charged air cooler that meets Tier 4f EU (Stage IV) requirements	•	•
Air filter with indicator	•	•
Air intake heater	•	•
Cyclone pre-cleaner	•	•
Electric engine shutoff	•	•
Fuel filter and water separator	•	•
Alternator, 110 A	•	•
Electric/Electronic control system		
Contronics	•	•
Advanced mode control system	•	•
Self diagnostic system	•	•
Machine status indication	•	•
Engine speed sensing power control	•	•
Automatic idling system	•	•
One touch power boost	•	•
Safety stop/start function	•	•
Adjustable LCD color monitor	•	•
Master electrical disconnect switch	•	•
Engine restart prevention circuit	•	•
High capacity halogen lights:	•	•
Frame-mounted 2	•	•
Boom-mounted 1	•	•
Batteries, 2 x 12 V / 200 Ah	•	•
Start motor, 24 V / 5.5 kW	•	•
Hydraulic system		
Pilot control pattern change	•	•
Overload warning device	•	•
Automatic sensing hydraulic system	•	•
Summation system	•	•
Boom priority	•	•
Arm priority	•	•
Swing priority	•	•
ECO mode fuel saving technology	•	•
Boom, arm and bucket regeneration valves	•	•
Swing anti-rebound valves	•	•
Boom float function without HRV	•	•
Boom and arm holding valves	•	•
Multistage filtering system	•	•
Cylinder cushioning	•	•
Cylinder contamination seals	•	•
Auxiliary hydraulic valve	•	•
Automatic two speed travel motors	•	•
Travel alarm	•	•
Hydraulic oil, longlife oil 46	•	•
Frame		
Access way with handrail	•	•
Tool storage area	•	•
Punched metal anti-slip plates	•	•
Undercover (heavy duty)	•	•
Full height counterweight:		
4 950 kg (10,910 lb)	•	•
6 200 kg (13,670 lb) - Long Reach	•	•
5 500 kg (12,130 lb)	•	•
6 800 kg (14,990 lb) - Long Reach	•	•
Cab and interior		
ROPS (ISO 121172) certified cab	•	•
Silicon oil and rubber mounts with spring	•	•
Travel pedals and hand levers	•	•
Adjustable operator seat and joystick control console	•	•
Control joysticks with 4 switches each	•	•

EC250E | EC300E

	EC250E	EC300E
Cab and interior		
Heater & air conditioner, automatic	•	•
Flexible antenna	•	•
Radio with MP3 & USB Jack with bluetooth	•	•
Hydraulic safety lock lever	•	•
Cab, all weather sound suppressed, includes:	•	•
Cup holders	•	•
Door locks	•	•
Tinted glass	•	•
Floor mat	•	•
Horn	•	•
Large storage area	•	•
Pullup type front window	•	•
Removable lower windshield	•	•
Seat belt	•	•
Safety glass	•	•
Sun screens, front, roof, rear	•	•
Rain shield	•	•
Windshield wiper with intermittent feature	•	•
Rear view camera	•	•
Opening top hatch	•	•
Master key	•	•
Undercarriage		
Undercover (heavy duty)	•	•
Hydraulic track adjusters	•	•
Greased and sealed track link	•	•
Track Guard	•	•
Track shoes		
800 mm (32") with triple grousers	•	•
Digging equipment		
Boom: 6.0 m (19' 8") monoblock	•	•
2.97 m (9' 9") HD	•	•
Boom: 10.2 m (33' 6") monoblock, Long Reach	•	•
Arm: 7.85 m (25' 9"), Long Reach	•	•
Boom: 6.2 m (20' 4") monoblock	•	•
Arm: 3.05 m (10' 0") HD	•	•
Boom: 10.2 m (33' 6") monoblock, Long Reach	•	•
Arm: 7.9 m (25' 11"), Long Reach	•	•
Manual centralized lubrication	•	•
OPTIONAL EQUIPMENT		
	EC250E	EC300E
Engine		
Block heater: 120 V	•	•
Oil bath pre-cleaner	•	•
Diesel coolant heater, 10 kW	•	•
Water separator with heater	•	•
Auto engine shutdown	•	•
Fuel filler pump: 50 l/min (13.2 gpm), with automatic shutoff	•	•
Electric		
Extra work lights (Halogen or LED):	•	•
Cab-mounted 3	•	•
Boom-mounted 1	•	•
Counterweight-mounted 1	•	•
Anti-theft system	•	•
Rotating warning beacon	•	•
Hydraulic system		
Hose rupture valve: boom	•	•
Hose rupture valve: arm	•	•
Boom float function with HRV	•	•
Hydraulic piping:	•	•
Attachment management system (up to 18 programmable memories)	•	•

OPTIONAL EQUIPMENT

	EC250E	EC300E
Hydraulic system		
Hammer & shear, 1 or 2 pump flow	•	•
Hammer & shear: variable flow and pressure pre-setting	•	•
Additional return filter	•	•
Slope & rotator	•	•
Grapple	•	•
Oil leak (drain) line	•	•
Quick coupler piping	•	•
Volvo hydraulic quick coupler S1	•	•
Volvo hydraulic quick coupler S2	•	•
Volvo hydraulic quick coupler U24	•	•
Volvo hydraulic quick coupler U29	•	•
Volvo hydraulic quick coupler S70	•	•
Hydraulic oil, biodegradable 46	•	•
Hydraulic oil, longlife oil 32	•	•
Hydraulic oil, longlife oil 68	•	•
Cab and interior		
Fabric seat with heater	•	•
Fabric seat with heater and air suspension	•	•
Falling object guard, FOG (fixed type or hinge type)	•	•
Frame-mounted	•	•
Cab-mounted	•	•
Cab-mounted falling object protective structure (FOPS)	•	•
Side view camera	•	•
Smoker kit (ashtray and lighter)	•	•
Safety net for front window	•	•

	EC250E	EC300E
Cab and interior		
Lower wiper with intermittent control	•	•
Anti-vandalism kit	•	•
Specific key	•	•
Air blow gun	•	•
Undercarriage		
Full track guard	•	•
Track shoes 600/700/800/900 mm (24/28/32/36") with triple grousers	•	•
600 mm (24") HD with triple grousers	•	•
Track shoes 600 mm (24") with double grousers	•	•
Track shoes 700 mm (28") with double grousers	•	•
Digging equipment		
Boom: 6.0 m (19' 8") monoblock, heavy duty	•	•
Arm: 2.5 m (8' 2") HD, 2.97 m (9' 9"), 3.6 m (11' 10")	•	•
Arm: 2.55 m (8' 4") HD, 3.05 m (10' 0"), 3.7 m (12' 2")	•	•
Arm: 7.9 m (25' 11"), long reach	•	•
Linkage with lifting eye	•	•
Service		
Tool kit, daily maintenance	•	•
Tool kit, full scale	•	•
Automatic lubrication system	•	•

Selection of Volvo optional equipment

LED Lights



Side-view camera



Reversible cooling fan



Long reach and two-piece booms



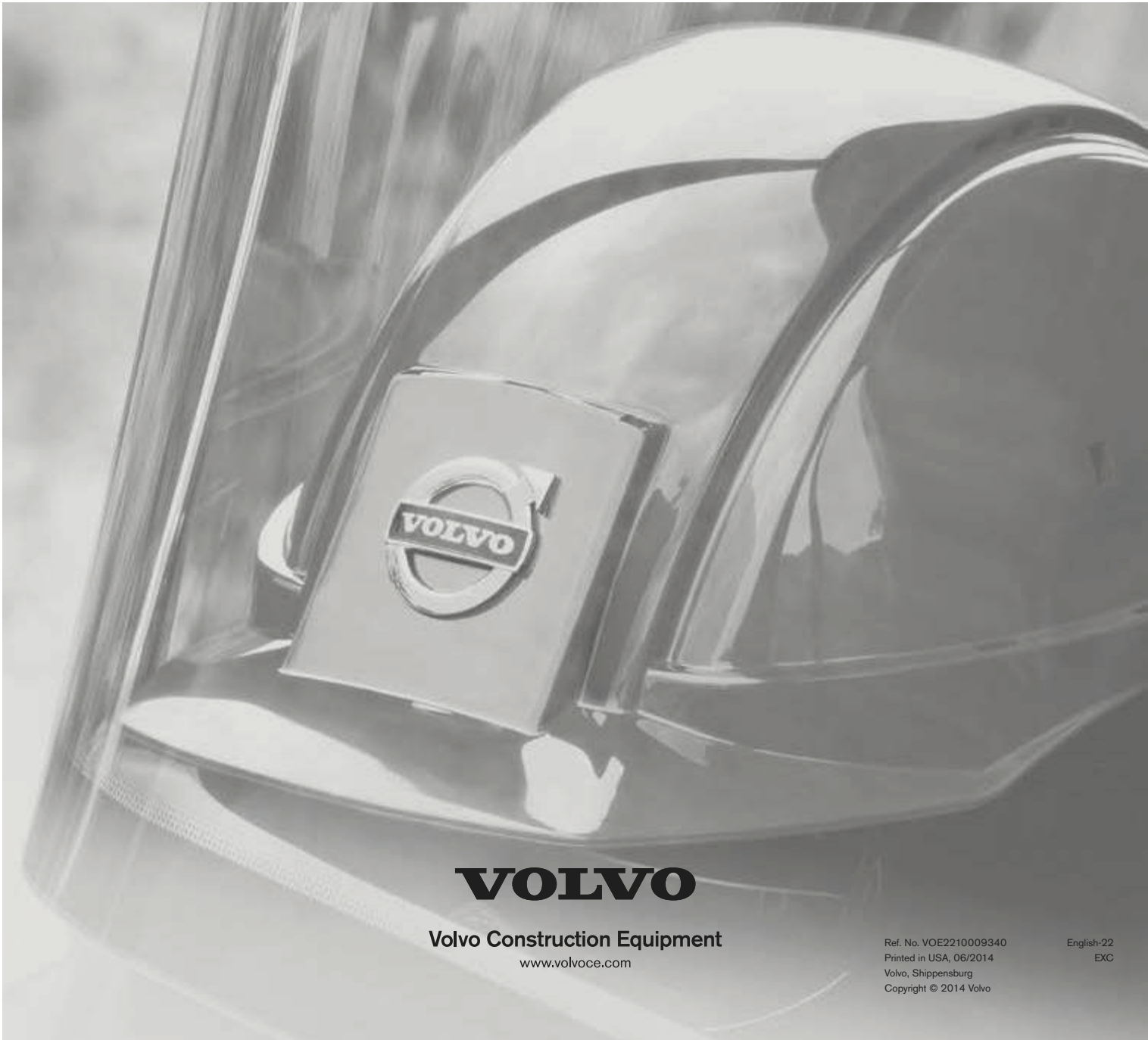
Swing-out FOG (*for demolition package only)



Demolition protection



Not all products are available in all markets. Under our policy of continuous improvement, we reserve the right to change specifications and design without prior notice. The illustrations do not necessarily show the standard version of the machine.



VOLVO

Volvo Construction Equipment
www.volvoce.com

Ref. No. VOE2210009340
Printed in USA, 06/2014
Volvo, Shippensburg
Copyright © 2014 Volvo

English-22
EXC