



Volvo Construction Equipment

# EC350E, EC380E

VOLVO EXCAVATORS 36-42 t / 78,940-92,760 lb 303 hp



# A PASSION FOR PERFORMANCE.

At Volvo Construction Equipment, we're not just coming along for the ride. Developing products and services that raise productivity – we are confident we can lower costs and increase profits for industry experts. Part of the Volvo Group, we are passionate about innovative solutions to help you work smarter – not harder.

## Helping you to do more.

Doing more with less is a trademark of Volvo Construction Equipment. High productivity has long been married to low energy consumption, ease of use and durability. When it comes to lowering life-cycle costs, Volvo is in a class of its own.

## Designed to fit your needs.

There is a lot riding on creating solutions that are suited to the particular needs of different industry applications. Innovation often involves high technology – but it doesn't always have to. Some of our best ideas have been simple, based on a clear and deep understanding of our customers' working lives.



## You learn a lot in 180 years.

Over the years, Volvo has advanced solutions that have revolutionized the use of construction equipment. No other name speaks Safety louder than Volvo. Protecting operators, those around them and minimizing our environmental impact are traditional values that continue to shape our product design philosophy.

## We're on your side.

We back the Volvo brand with the best people. Volvo is truly a global enterprise, one that is on standby to support customers quickly and efficiently – wherever they are.

## We have a passion for performance.



Volvo Trucks



Renault Trucks



Mack Trucks



UD Trucks



Volvo Buses



Volvo Construction Equipment



Volvo Penta



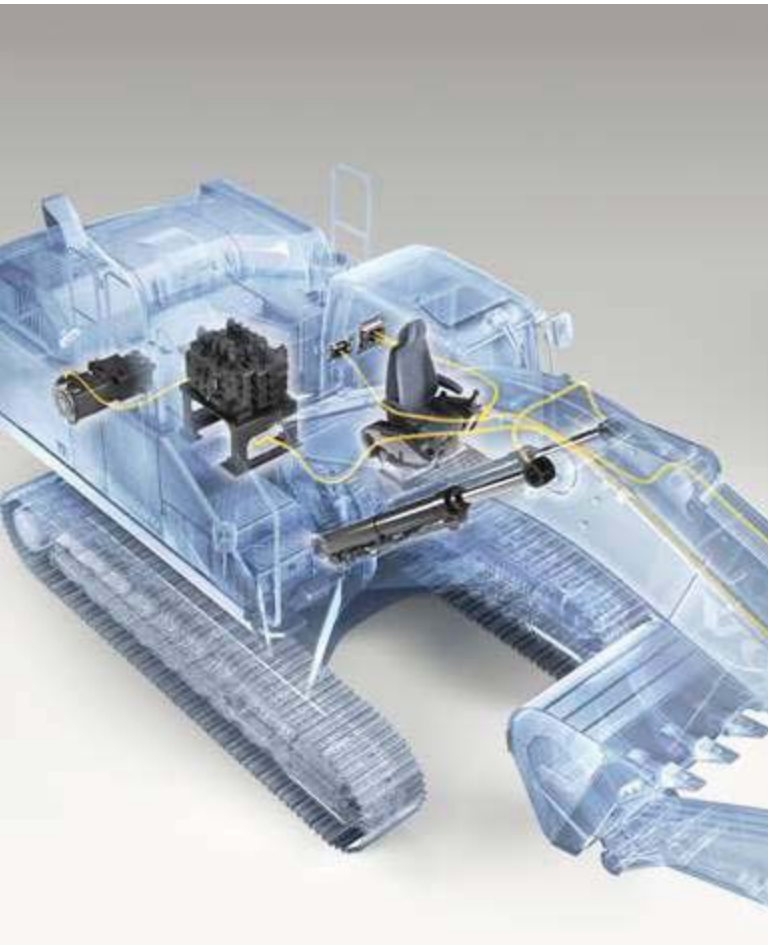
Volvo Financial Services

# Elite efficiency.

Fuel efficiency is at the center of the EC350E and EC380E crawler excavators. With advanced technology including Volvo's unique ECO mode and a new electro-hydraulic control system, these high production machines deliver up to 9% greater fuel efficiency. Experience efficient production at its best with Volvo.

## Advanced hydraulics

The new electro-hydraulic system uses intelligent technology to control on-demand flow and reduce internal losses in the hydraulic circuit. This increases controllability, shortens cycle times and improves fuel efficiency – resulting in higher productivity and performance.



## Work modes

Volvo's unique, integrated work mode system now includes the G4 mode for optimum fuel efficiency and machine performance. Operators can choose the best work mode for the task at hand – select from I (Idle), F (Fine), G (General) and H (Heavy).



## Automatic idling system

Engine speed is reduced to idle when the controls are inactive for a pre-set amount of time (between 3 and 20 seconds). This reduces fuel consumption and noise.

## Auto engine shut down

To reduce fuel consumption, the engine will automatically switch off when the machine is inactive for a pre-set amount of time (five minutes is the default setting).

## Fuel consumption display

A gauge bar on the monitor measures both instantaneous fuel consumption and average fuel consumption. This allows machine owners and operators to monitor fuel usage on different job sites.



#### ECO mode

Volvo's unique ECO mode optimizes the hydraulic system to reduce flow and pressure losses – resulting in improved fuel efficiency without any loss of performance in most operating conditions. ECO mode is automatically selected but can be switched off via the keypad.



### Human Machine Interface (HMI)

All machine interfaces – including the joysticks, keypad and LCD monitor – are ergonomically positioned and designed for optimum control and efficiency. For operator convenience and ease of use, the number of switches has been significantly reduced.

# Boost your productivity.

It's a fact that operators work more efficiently when they're given the best tools for the job. That's why, on top of being a superior production machine, the EC350E and EC380E have an ergonomic design with ideally placed controls and switches. With built in comfort and optimized control, operators will work efficiently and productively all day long.

## Keypad

The optimally positioned keypad allows the operator to easily navigate through the LCD monitor and activate machine functions in a safe and comfortable way. The functionality of the camera, air conditioning and lights can be customized via the hot key – enabling the operator to select and save desired configurations.

## LCD monitor

The new, color, eight inch LCD monitor displays machine status information including fuel consumption data and service interval alerts – enabling increased uptime and high productivity. The user-friendly design is easy to read in any light conditions.



## Shortcut switch

The windshield wipers, camera, audio mute can be assigned to a shortcut switch located on the joystick. This allows the operator to easily control the selected function by simply pressing a switch.

## Seat belt warning alarm

If the seat belt is not fastened when the ignition key is turned, a sensor triggers an alarm which sounds for three seconds.

## Bluetooth®

For added convenience, operators can now connect a Bluetooth device to the machine.

# Non-stop productivity.

Experienced and skilled Volvo engineers have developed and rigorously tested Tier 4 Final engine systems that deliver the ultimate combination of high productivity and low fuel consumption. Benefit from Volvo's signature high torque at low rpm and experience superior performance and reduced fuel consumption.

## Volvo After Treatment System

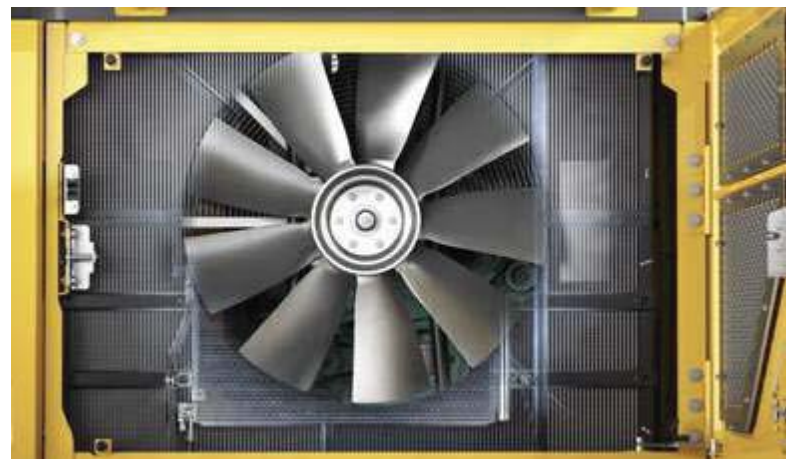
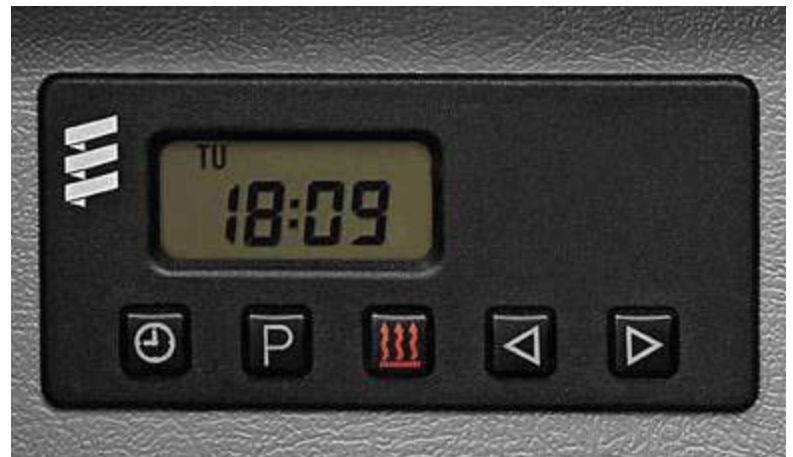
During the fully automatic regeneration process, particulate matter in the Diesel Particulate Filter is oxidized at low exhaust temperatures via passive regeneration. Volvo uses Selective Catalytic Reduction



technology where Diesel Exhaust Fluid is heated to produce ammonia. This causes a chemical reaction which converts NOx to nitrogen and CO2 – both of which are naturally found in the air. Neither process interrupts machine operation, performance or productivity.

## Diesel-driven heater

The optional diesel-driven coolant heater helps to start the engine in low temperatures while simultaneously heating the cab. The heater can be set in advance to engage at a specific date and time.



## Cooling fan

The hydraulically-driven, electronically controlled cooling fan regulates the temperature of the vital components. It automatically activates only when needed – reducing fuel consumption and noise. The optional reversible functionality – which blows air in the opposite direction – enables self-cleaning of the cooling units.



#### **Volvo engine**

Featuring proven, advanced technology and built on decades of experience, Volvo's robust D13 Tier 4 Final engine boasts more power while reducing both fuel consumption and emissions and delivering superior quality, reliability and durability.



#### **Reinforced undercarriage**

With a strong three-piece undercarriage and a high strength tensile steel X-shaped frame, Volvo excavators are built to withstand tough conditions. For superior durability, the undercarriage components are reinforced – ensuring long life and high uptime.

# Built to last.

From quarries to mass excavation, these heavy-duty production machines have been built to work on tough job sites. Featuring a robust, reinforced structure and high quality welding, the EC350E and EC380E boast superior strength and durability. Experience reliability you can count on with Volvo.

## Superstructure undercover

The heavy-duty superstructure undercover plates increase durability by providing additional protection to the underside of the machine in tough applications – preventing damage from rock and debris.



## Doors and hinges

Volvo's durable design features a rigid side door with a robust handle and hinges for superior durability.



## Robust design

The reinforced idler frame, track links, top and bottom rollers are built to withstand tough conditions for improved durability and reliability in demanding applications.

# Up your uptime.

At Volvo we believe that maintaining your machine should be as quick and easy as possible. That's why our designers and engineers have developed innovative methods to make maintenance easy. With large, wide opening compartment doors and grouped service points, checks will be carried out faster and you'll get the most out of every operating shift.

## Service access

Grouped filters are quick and easy to access from ground level. To facilitate fast servicing, grouped greasing points are easily accessed with the machine in one position.



## Anti-slip plates

Punched anti-slip plates provide superior grip and increased safety. The design facilitates easy cleaning.

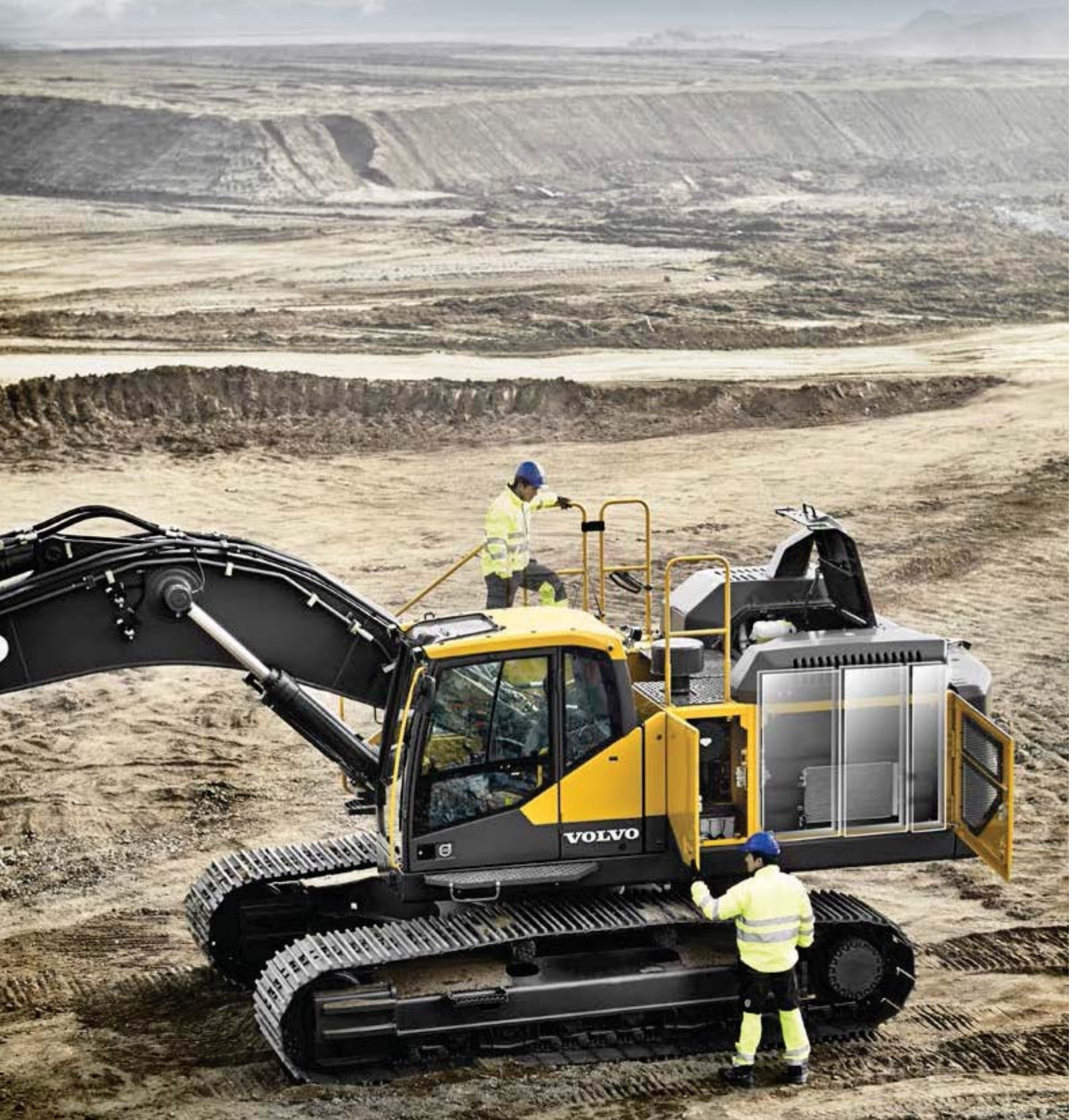


## Storage space

A large storage compartment provides a safe and convenient location for items including a toolbox and grease can.

## Handrails

Handrails and full size guardrails provide safe and easy access to the cab and superstructure.



#### Single module cooler

The radiator, charged air cooler and hydraulic oil cooler are situated side-by-side on a single layer to maximize efficiency, reduce blockages and aid cleaning. The system is easily accessed from ground level by simply opening the side door.



### Attachments

Volvo's durable attachments have been purpose-built to work in perfect harmony with Volvo machines, forming one solid, reliable unit. With functions and properties ideally matched, Volvo attachments are an integrated part of the excavator for which they're intended – delivering maximum productivity.

# The perfect match.

Maximize your productivity and profitability with the EC350E and EC380E and Volvo's durable range of attachments. Increase your versatility, access more applications and effectively perform a variety of tasks – all while experiencing faster cycle times and excellent control. Get the most out of your excavator with Volvo.

## Bucket range

Volvo's general purpose buckets are the perfect tool for digging and re-handling in soft to medium conditions. Heavy-duty buckets are intended for productive digging in compact materials. Both provide maximum productivity and long life.



## Optional auxiliary hydraulics

Factory fitted breaker and shear piping (X1) as well as tilt and rotator piping (X3) increase versatility by enabling a wide range of additional attachments to be used.



## S-type quick coupler

The Volvo S-type quick coupler is designed to work with Volvo attachments – delivering ultimate compatibility and unrivalled performance.

## Genuine Volvo wear parts

Volvo offers a selection of economic, replaceable wear parts including high quality teeth, segments, side cutters, adapters and shrouds to protect the bucket and ensure long life.



## Universal quick coupler

The Volvo universal quick coupler offers maximum versatility. It picks up a variety of attachments from various manufacturers and meets new safety regulations.

# Quality counts.

## Safe access

Punched anti-slip plates, handrails and full size guardrails provide safe and easy access to the machine.



## HMI

All machine interfaces are ergonomically positioned and designed for optimum control and efficiency.

## Advanced hydraulics

New electro-hydraulic system and main control valve use intelligent technology to control on-demand flow for high performance and efficiency.

## Quick coupler

The Volvo quick coupler offers maximum versatility, picking up a wide variety of attachments.



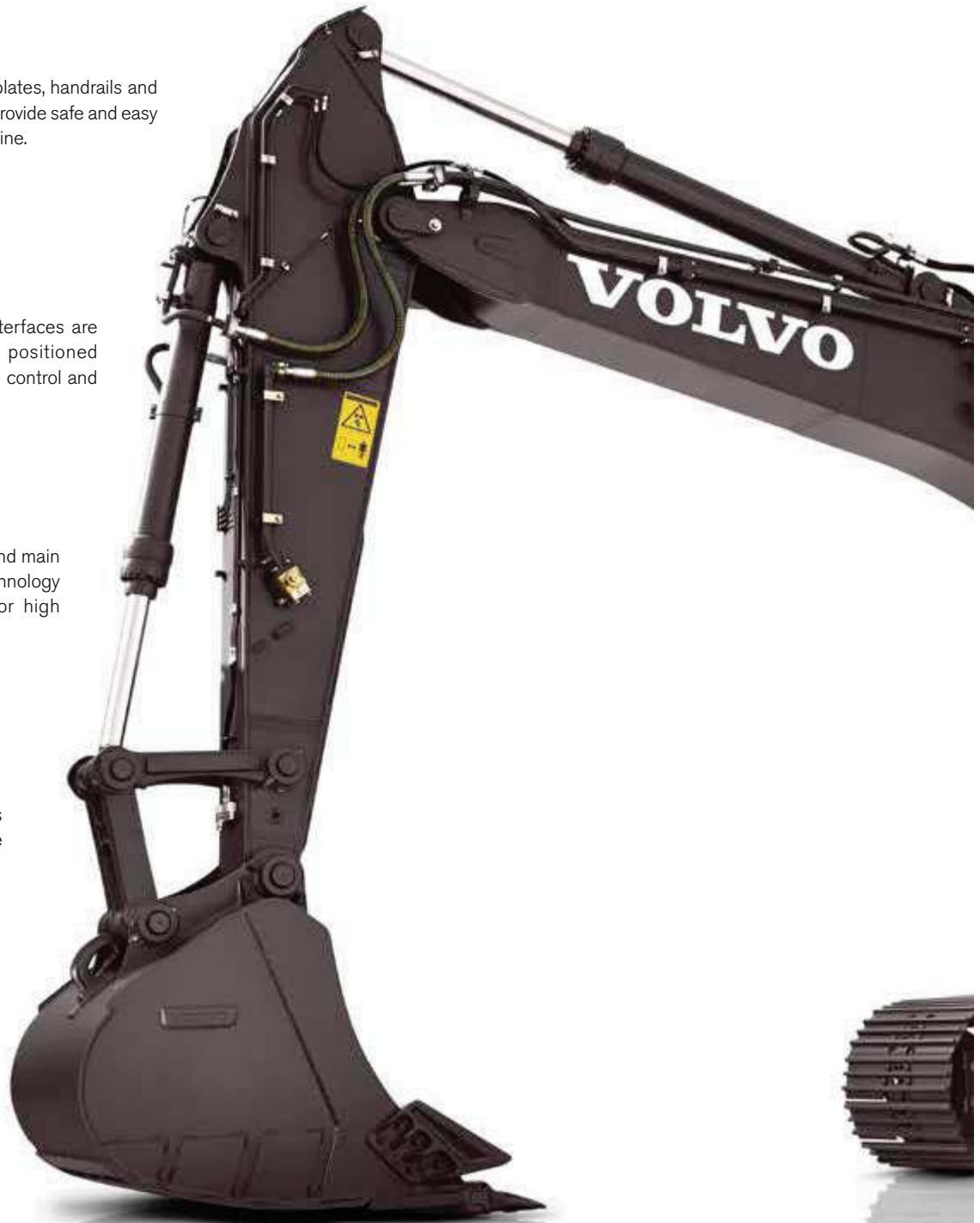
## Attachments

Volvo's durable attachments have been purpose-built to deliver maximum productivity and long service life in combination with Volvo machines.



## Reinforced undercarriage

The undercarriage components are reinforced to ensure long life, high uptime and ultimate durability in tough conditions.



## Diesel Exhaust Fluid (DEF)

Volvo offers a total DEF solution that is quality assured, cost efficient and easily accessible. Contact your Volvo dealer for more information.

## LCD monitor

The new, eight inch LCD monitor clearly displays machine status information for easy operation and increased productivity.



## ECO mode

Volvo's unique ECO mode improves fuel efficiency without any loss of performance in most operating conditions.

## Service access

Grouped filters are quick and easy to access from ground level via large, wide compartment doors.



## Volvo engine

Volvo's D13 Tier 4 Final engine boasts more power while reducing both fuel consumption and emissions and delivering superior quality, reliability and durability.



## Single module cooler

The radiator, charged air cooler and hydraulic oil cooler are situated side-by-side on a single layer to maximize efficiency, reduce blockages and aid cleaning.

## Volvo After Treatment System

The automatic regeneration process takes place without interrupting machine operation, performance or productivity.



# Adding value to your business.

Being a Volvo customer means having a complete set of services at your fingertips. Volvo can offer you a long-term partnership, protect your revenue and provide a full range of customer solutions using high quality parts, delivered by passionate people. Volvo is committed to increasing the positive return on your investment and maximizing uptime.



## Complete Solutions

Volvo has the right solution for you. So why not let us provide all your needs throughout the whole life cycle of

your machine? By listening to your requirements, we can reduce your total cost of ownership and increase your revenue.



## Genuine Volvo Parts

Our attention to detail is what makes us stand out. This proven concept acts as a solid investment in your machine's future. Parts are extensively tested and approved because every part is vital for uptime and performance. Only by using Genuine Volvo Parts, can you be sure that your machine retains the renowned Volvo quality.



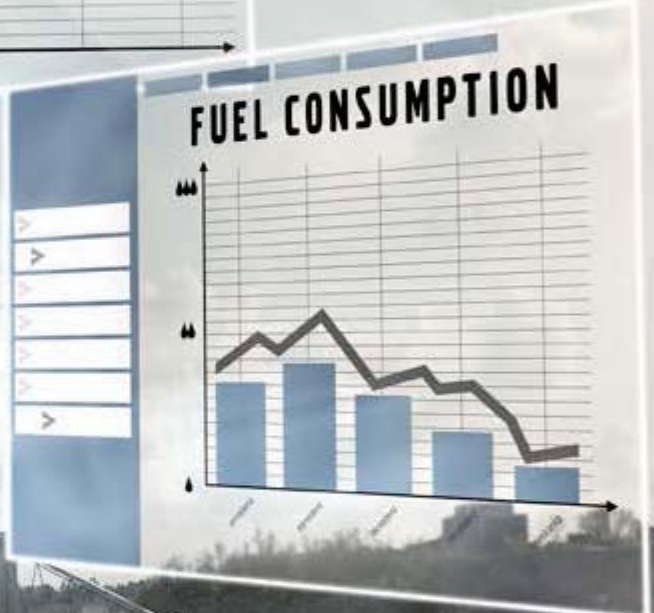
## Service Network

In order to respond to your needs faster, a Volvo expert is on their way to your job site from one of our Volvo facilities. With our extensive infrastructure of technicians, workshops and dealers, Volvo has a comprehensive network to fully support you using local knowledge and global experience.



**SERVICE PLAN**

	DAY01	DAY02	DAY03	DAY04	DAY05	DAY06	DAY07
Task 1							✓
Task 2				✓	✓		
Task 3	✓						✓
Task 4			✓				✓
Task 5	✓						
Task 6			✓				
Task 7							✓



**Customer Support Agreements**

The range of Customer Support Agreements offer preventive maintenance, total repairs and a number of uptime services. Volvo uses the latest technology to monitor machine operation and status, giving you advice to increase your profitability. By having a Customer Support Agreement you are in control of your service costs.

# Volvo EC350E, EC380E in detail.

## Engine

The latest generation, Volvo engine Tier 4f emissions compliant diesel engine fully meets the demands of the latest, emissions regulations. Featuring Volvo Advanced Combustion Technology (V-ACT), it is designed to deliver superior performance and fuel efficiency. The engine uses precise, high pressure fuel injectors, turbo charger and air-to-air intercooler, and electronic engine controls to optimize machine performance.

Air Filter: 3-stage with pre-cleaner

Automatic Idling System: Reduces engine speed to idle when the levers and pedals are not activated resulting in less fuel consumption and low cab noise levels.

### EC350E, EC380E

Engine Tier 4f	Volvo	D13J	
Max power at	r/s / r/min	28 / 1 700	
Net, ISO 9249/ SAE J1349	kW / hp	225 / 302	
Gross, ISO 14396/ SAE J1995	kW / hp	226 / 303	
Max torque at	Nm / r/min	1 692 / 1 275	lb. ft. 1,248
No. of cylinders		6	
Displacement	l	12.8	cu. in. 781
Bore	mm	131	in. 5.16
Stroke	mm	158	in. 6.22

## Electrical system

High-capacity electrical system that is well protected. Waterproof double-lock harness plugs are used to secure corrosion-free connections. The main relays and solenoid valves are shielded to prevent damage. The master switch is standard. Contronics provides advanced monitoring of machine functions and important diagnostic information.

Voltage	V	24
Batteries	V	2 x 12
Battery capacity	Ah	200
Alternator	V / Ah	28 / 80

## Swing system

The swing system uses an axial piston motors, driving a planetary gearbox for maximum torque. An automatic holding brake and anti-rebound valve are standard.

### EC350E

Max. slew speed	r/min	10.2
Max. slew torque	kNm	119 lbf. ft. 87,770

### EC380E

Max. slew speed	r/min	10.2
Max. slew torque	kNm	130.5 lbf. ft. 96,250

## Drive

Each track is powered by an automatic two-speed shift travel motor. The track brakes are multi-disc, spring-applied and hydraulic released. The travel motor, brake and planetary gears are well protected within the track frame.

### EC350E, EC380E

Max. drawbar pull	kN	276.5	lb. 62,160
Max. travel speed	km/h	3.4/5.3	mph 2.1/3.3
Gradeability	°	35	

## Undercarriage

The undercarriage has a robust X-shaped frame. Greased and sealed track chains are standard.

### EC350E

Track pads	2 x 48		
Link pitch	mm	215.9	in. 8.5
Shoe width, triple grouser	mm	600/700/ 800/900	in. 24/28/ 32/36
Shoe width, double grouser	mm	600	in. 24
Bottom rollers	2 x 8		
Top rollers	2 x 2		

### EC380E

Track pads	2 x 50		
Link pitch	mm	215.9	in. 8.5
Shoe width, triple grouser	mm	600/ 600HD/ 700/ 800/900	in. 24/ 24HD/ 28/ 32/36
Shoe width, double grouser	mm	600	in. 24
Bottom rollers	2 x 9		
Top rollers	2 x 2		

## Hydraulic system

The new electrohydraulic system and new MCV (main control valve) use intelligent technology to control on-demand flow for high-productivity, high-digging capacity and excellent fuel consumption.

The following important functions are included in the system for optimum performance:

Summation system: Combines the flow of both hydraulic pumps to ensure quick cycle times and high productivity.

Boom priority: Gives priority to the boom operation for faster raising when loading or performing deep excavations.

Arm priority: Gives priority to the arm operation for faster cycle times in leveling and for increased bucket filling when digging.

Swing priority: Gives priority to swing functions for faster simultaneous operations.

Regeneration system: Prevents cavitation and provides flow to other movements during simultaneous operations for maximum productivity.

Power boost: All digging and lifting forces are increased.

Holding valves: Boom and arm holding valves prevent the digging equipment from creeping.

### EC350E

Main pump, Type 2 x variable displacement axial piston pumps			
Maximum flow	l/min	2 x 300	gpm 2 x 79
Pilot pump, Type Gear pump			
Maximum flow	l/min	32.6	gpm 8.6

### EC380E

Main pump, Type 2 x variable displacement axial piston pumps			
Maximum flow	l/min	2 x 300	gpm 2 x 79
Pilot pump, Type Gear pump			
Maximum flow	l/min	32.6	gpm 8.6

## Hydraulic motors

Travel: Variable displacement axial piston motor with mechanical brake

Slew: Fixed displacement axial piston motor with mechanical brake

Relief valve setting

### EC350E

Implement	MPa	32.4/35.3	psi	4,690/5,120
Travel circuit	MPa	35.3	psi	5,120
Slew circuit	MPa	25.5	psi	3,700
Pilot circuit	MPa	3.9	psi	570

### EC380E

Implement	MPa	32.4/35.3	psi	4,690/5,120
Travel circuit	MPa	35.3	psi	5,120
Slew circuit	MPa	27.9	psi	4,050
Pilot circuit	MPa	3.9	psi	570

## Hydraulic cylinders

### EC350E

Mono boom				2
Bore x Stroke	ø x mm	160 x 1 530	ø x in	6.3 x 60.2
Arm		1		1
Bore x Stroke	ø x mm	175 x 1 700	ø x in	6.9 x 66.9
Bucket		1		1
Bore x Stroke	ø x mm	145 x 1 285	ø x in	5.7 x 50.6
ME Bucket		1		1
Bore x Stroke	ø x mm	160 x 1 250	ø x in	6.3 x 49.2
Service refill capacities				
Fuel tank	l	620	gal	164
Hydraulic system, total	l	500	gal	132
Hydraulic tank	l	225	gal	59
Engine oil	l	42	gal	11
Engine coolant	l	60	gal	16
Slew reduction unit	l	6	gal	1.6
Travel reduction unit	l	2 x 6.8	gal	2 x 1.8

### EC380E

Mono boom				2
Bore x Stroke	ø x mm	160 x 1 530	ø x in	6.3 x 60.2
Arm		1		1
Bore x Stroke	ø x mm	175 x 1 700	ø x in	6.9 x 66.9
Bucket		1		1
Bore x Stroke	ø x mm	145 x 1 285	ø x in	5.7 x 50.6
ME Bucket		1		1
Bore x Stroke	ø x mm	160 x 1 250	ø x in	6.3 x 49.2
LR Bucket		1		1
Bore x Stroke	ø x mm	140 x 1 140	ø x in	5.5 x 44.9
Service refill capacities				
Fuel tank	l	620	gal	164
Hydraulic system, total	l	500	gal	132
Hydraulic tank	l	225	gal	59
Engine oil	l	42	gal	11
Engine coolant	l	60	gal	16
Slew reduction unit	l	6.5	gal	1.7
Travel reduction unit	l	2 x 6.8	gal	2 x 1.8

## Cab

The operator's cab has easy access via a wide door opening. The cab is supported on hydraulic dampening mounts to reduce shock and vibration levels. These along with sound absorbing lining provide low noise levels. The cab has excellent all-round visibility. The front windshield can easily slide up into the ceiling, and the lower front glass can be removed and stored in the side door.

Integrated air-conditioning and heating system:

The pressurized and filtered cab air is supplied by an automatically-controlled fan. The air is distributed throughout the cab from 14 vents.

Ergonomic operator's seat: The adjustable seat and joystick console move independently to accommodate the operator.

The seat has 12 different adjustments plus a seat belt for the operator's comfort and safety.

## Sound Level

Sound level in cab according to ISO 6396

### EC350E, EC380E

LpA dB(A) 71

External sound level according to ISO 6395 and

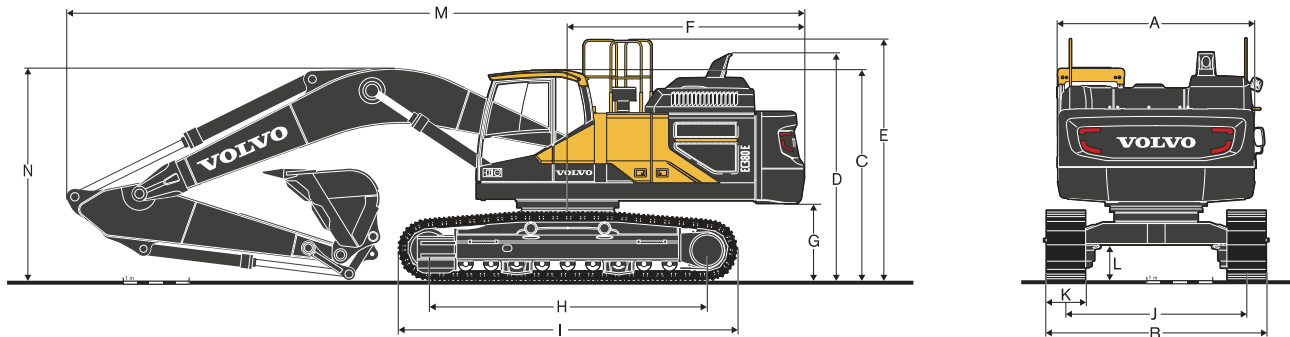
EU Noise Directive (2000/14/EC) and 474-1:2006 +A1:2009

### EC350E, EC380E

LwA dB(A) 105

# Specifications.

## DIMENSIONS



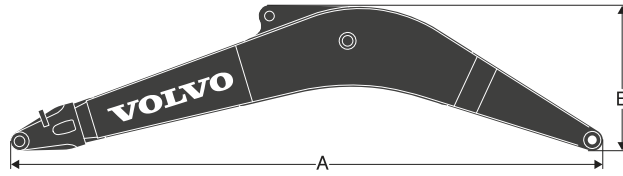
Description	Unit		EC350EL							
			6.2 m, 20' 4" ft in				6.45 m, 21' 2" ft in			
Boom	m	in	2.6	8' 6"	2.6	8' 6"	3.2	10' 6"	3.9	12' 10"
A. Overall width of upper structure	mm	in	2 990	9' 10"	2 990	9' 10"	2 990	9' 10"	2 990	9' 10"
B. Overall width	mm	in	3 390	11' 1"	3 390	11' 1"	3 390	11' 1"	3 390	11' 1"
C. Overall height of cab	mm	in	3 231	10' 7"	3 231	10' 7"	3 231	10' 7"	3 231	10' 7"
D. Overall height of diffuser	mm	in	3 475	11' 5"	3 475	11' 5"	3 475	11' 5"	3 475	11' 5"
E. Overall height of guardrail	mm	in	3 696	12' 2"	3 696	12' 2"	3 696	12' 2"	3 696	12' 2"
F. Tail swing radius	mm	in	3 600	11' 10"	3 600	11' 10"	3 600	11' 10"	3 600	11' 10"
G. Counterweight clearance *	mm	in	1 161	3' 10"	1 161	3' 10"	1 161	3' 10"	1 161	3' 10"
H. Tumbler length	mm	in	4 020	13' 2"	4 020	13' 2"	4 020	13' 2"	4 020	13' 2"
I. Track length	mm	in	4 957	16' 3"	4 957	16' 3"	4 957	16' 3"	4 957	16' 3"
J. Track gauge	mm	in	2 590	8' 6"	2 590	8' 6"	2 590	8' 6"	2 590	8' 6"
K. Shoe width	mm	in	800	31"	800	31"	800	31"	800	31"
L. Min. ground clearance *	mm	in	500	1' 8"	500	1' 8"	500	1' 8"	500	1' 8"
M. Overall length	mm	in	11 052	36' 3"	11 312	37' 1"	11 226	36' 10"	11 269	37' 0"
N. Overall height of boom	mm	in	3 756	12' 4"	3 603	11' 10"	3 352	11'	3 596	11' 10"

Description	Unit		EC380EL								EC380ELR	
			6.2 m, 20' 4" ft in				6.45 m, 21' 2" ft in				8.5 m, 27' 11" ft in	
Boom	m	in	2.6	8' 6"	2.6	8' 6"	3.2	10' 6"	3.9	12' 10"	5	16' 5"
A. Overall width of upper structure	mm	in	2 990	9' 10"	2 990	9' 10"	2 990	9' 10"	2 990	9' 10"	2 990	9' 10"
B. Overall width	mm	in	3 540	11' 7"	3 540	11' 7"	3 540	11' 7"	3 540	11' 7"	3 540	11' 7"
C. Overall height of cab	mm	in	3 220	10' 7"	3 220	10' 7"	3 220	10' 7"	3 220	10' 7"	3 220	10' 7"
D. Overall height of diffuser	mm	in	3 470	11' 5"	3 470	11' 5"	3 470	11' 5"	3 470	11' 5"	3 470	11' 5"
E. Overall height of guardrail	mm	in	3 685	12' 1"	3 685	12' 1"	3 685	12' 1"	3 685	12' 1"	3 685	12' 1"
F. Tail swing radius	mm	in	3 600	11' 10"	3 600	11' 10"	3 600	11' 10"	3 600	11' 10"	3 600	11' 10"
G. Counterweight clearance *	mm	in	1 155	3' 9"	1 155	3' 9"	1 155	3' 9"	1 155	3' 9"	1 155	3' 9"
H. Tumbler length	mm	in	4 240	13' 11"	4 240	13' 11"	4 240	13' 11"	4 240	13' 11"	4 240	13' 11"
I. Track length	mm	in	5 180	17' 0"	5 180	17' 0"	5 180	17' 0"	5 180	17' 0"	5 180	17' 0"
J. Track gauge	mm	in	2 740	9' 0"	2 740	9' 0"	2 740	9' 0"	2 740	9' 0"	2 740	9' 0"
K. Shoe width	mm	in	800	32"	800	32"	800	32"	800	32"	800	32"
L. Min. ground clearance *	mm	in	500	1' 8"	500	1' 8"	500	1' 8"	500	1' 8"	500	1' 8"
M. Overall length	mm	in	11 060	36' 3"	11 310	37' 1"	11 225	36' 10"	11 270	37' 0"	13 065	42' 10"
N. Overall height of boom	mm	in	3 510	11' 6"	3 455	11' 4"	3 275	10' 9"	3 485	11' 5"	4 500	14' 9"

\*Without shoe grouser

## DIMENSIONS

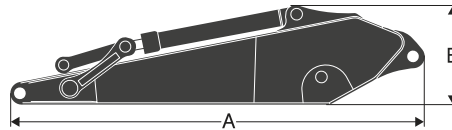
### Boom



Description	Unit		mono		mono		mono	
	m	in	6.2 ME	20' 4"	6.45 HD	21' 2"	8.5 LR	27' 11"
<b>Boom</b>								
A	mm	in	6 460	21' 2"	6 700	22' 0"	8 750	28' 8"
B	mm	in	1 740	5' 9"	1 800	5' 11"	1 610	5' 3"
Width	mm	in	820	2' 8"	820	2' 8"	820	2' 8"
Weight	kg	lb	3 355	7,390	3 310	7,300	4 855	10,710

\* Includes arm cylinder, piping and pin

### Arm

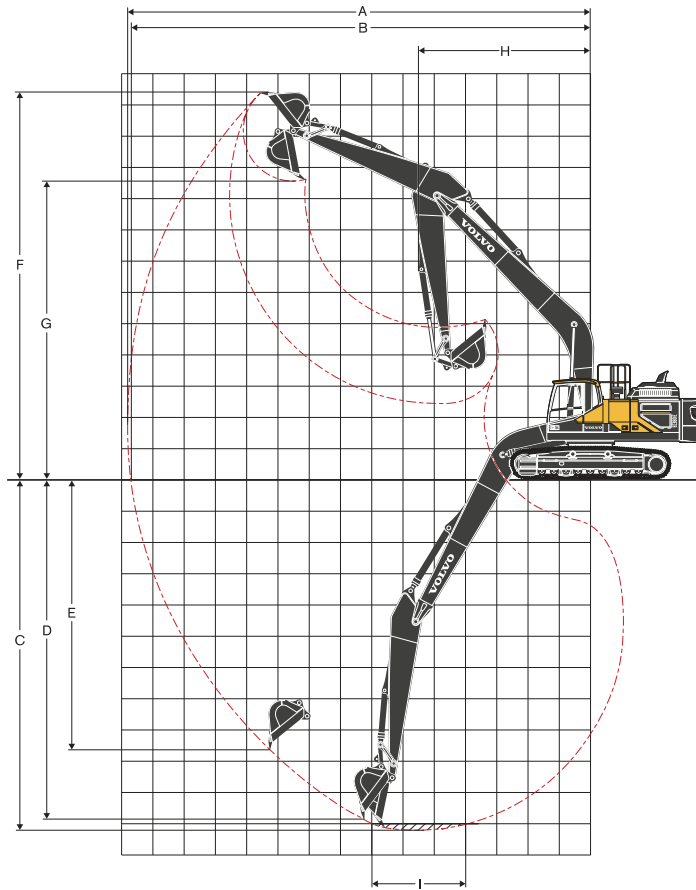
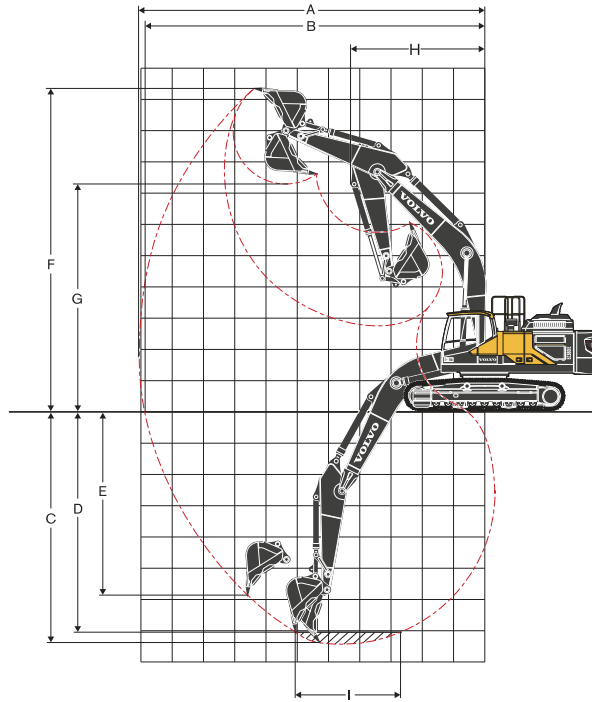


Description	Unit								Long reach	
	m	in	2.6	8' 6"	3.2 HD	10' 6"	3.9	12' 10"	5.0 LR	16' 5"
<b>Arm</b>										
A	mm	in	3 780	12' 5"	4 360	14' 4"	5 080	16' 8"	6 180	20' 3"
B	mm	in	1 145	3' 9"	1 145	3' 9"	1 145	3' 9"	1 040	3' 5"
Width	mm	in	560	1' 10"	560	1' 10"	560	1' 10"	560	1' 10"
Weight	kg	lb	2 050	4,520	2 180	4,810	2 300	5,070	2 525	5,570

\* Includes bucket cylinder, linkage and pin

# Specifications.

## WORK RANGES



**WORK RANGES**

Description	Unit		EC350E							
			6.2 m, 20' 4" ft in				6.45 m, 21' 2" ft in			
Boom										
Arm	m	ft in	2.6	8' 6"	2.6	8' 6"	3.2	10' 6"	3.9	12' 10"
A. Max. digging reach	mm	ft in	10 450	34' 3"	10 700	35' 1"	11 220	36' 10"	11 860	38' 11"
B. Max. digging reach on ground	mm	ft in	10 225	33' 7"	10 480	34' 5"	11 010	36' 2"	11 665	38' 3"
C. Max. digging depth	mm	ft in	6 750	22' 2"	6 985	22' 11"	7 585	24' 11"	8 285	27' 2"
D. Max. digging depth (2,44 m/8' level)	mm	ft in	6 570	21' 7"	6 800	22' 4"	7 420	24' 4"	8 140	26' 9"
E. Max. vertical wall digging depth	mm	ft in	4 855	15' 11"	5 080	16' 8"	5 510	18' 1"	6 300	20' 8"
F. Max. cutting height	mm	ft in	10 065	33' 0"	10 215	33' 6"	10 380	34' 1"	10 680	35' 0"
G. Max. dumping height	mm	ft in	6 805	22' 4"	6 955	22' 10"	7 145	23' 5"	7 420	24' 4"
H. Min. front slew radius	mm	ft in	4 115	13' 6"	4 315	14' 2"	4 275	14' 0"	4 235	13' 11"

**Digging forces with direct fit bucket**

Bucket radius	mm	ft in	1 810	5' 11"	1 623	5' 4"	1 623	5' 4"	1 623	5' 4"
Breakout force - bucket (Normal/Power boost)	SAE J1179	kN	214.5	48,220	198.0	44,510	198.0	44,510	198.0	44,510
	SAE J1179	lb	234.5	52,720	215.0	48,335	215.0	48,335	215.0	48,335
	ISO 6015	kN	243.4	54,720	221.7	49,840	221.7	49,840	221.7	49,840
Tearout force - dipper arm (Normal/Power boost)	ISO 6015	lb	265.4	59,665	242.7	54,560	242.7	54,560	242.7	54,560
	SAE J1179	kN	187.7	42,195	195.9	44,040	161.9	36,395	141.3	31,765
	SAE J1179	lb	205.7	46,245	212.9	47,860	176.9	39,770	154.3	34,690
Rotation angle, bucket	ISO 6015	kN	193.9	43,590	201.1	45,210	166.0	37,320	144.4	32,460
	ISO 6015	lb	211.9	47,635	219.1	49,255	181.0	40,690	157.4	35,385
Rotation angle, bucket	°		164		177		177		177	

Description	Unit		EC380E							
			6.2 m, 20' 4" ft in				6.45 m, 21' 2" ft in			
Boom										
Arm	m	ft in	2.6	8' 6"	2.6	8' 6"	3.2	10' 6"	3.9	12' 10"
A. Max. digging reach	mm	ft in	10 300	33' 9"	10 545	34' 7"	11 070	36' 4"	11 700	38' 5"
B. Max. digging reach on ground	mm	ft in	10 075	33' 1"	10 325	33' 11"	10 860	35' 7"	11 500	37' 9"
C. Max. digging depth	mm	ft in	6 540	21' 6"	6 785	22' 3"	7 390	24' 3"	8 085	26' 6"
D. Max. digging depth (2,44 m/8' level)	mm	ft in	6 180	20' 3"	6 430	21' 1"	7 060	23' 2"	7 735	25' 4"
E. Max. vertical wall digging depth	mm	ft in	5 275	17' 4"	5 430	17' 10"	5 875	19' 3"	6 675	21' 11"
F. Max. cutting height	mm	ft in	10 035	32' 11"	10 170	33' 4"	10 340	33' 11"	10 635	34' 11"
G. Max. dumping height	mm	ft in	6 945	22' 9"	7 095	23' 3"	7 285	23' 11"	7 560	24' 10"
H. Min. front slew radius	mm	ft in	4 115	13' 6"	4 315	14' 2"	4 275	14' 0"	4 240	13' 11"

**Digging forces with direct fit bucket**

Bucket radius	mm	ft in	1 810	5' 11"	1 623	5' 4"	1 623	5' 4"	1 623	5' 4"
Breakout force - bucket (Normal/Power boost)	SAE J1179	kN	214.5	48,220	198.0	44,510	198.0	44,510	198.0	44,510
	SAE J1179	lb	234.5	52,720	215.0	48,335	215.0	48,335	215.0	48,335
	ISO 6015	kN	243.4	54,720	221.7	49,840	221.7	49,840	221.7	49,840
Tearout force - dipper arm (Normal/Power boost)	ISO 6015	lb	265.4	59,665	242.7	54,560	242.7	54,560	242.7	54,560
	SAE J1179	kN	187.7	42,195	195.9	44,040	161.9	36,395	141.3	31,765
	SAE J1179	lb	205.7	46,245	212.9	47,860	176.9	39,770	154.3	34,690
Rotation angle, bucket	ISO 6015	kN	193.9	43,590	201.1	45,210	166.0	37,320	144.4	32,460
	ISO 6015	lb	211.9	47,635	219.1	49,255	181.0	40,690	157.4	35,385
Rotation angle, bucket	°		164		177		177		177	

# Specifications.

## BUCKET SELECTION GUIDE

Bucket type		Capacity			Cutting width		Weight		Teeth	EC350EL			
										6.2 m (20' 4") Boom		6.45 m (21' 2") Boom	
										800 mm (24") shoe, 6 700 kg (1,4770 lb) counterweight			
										2.6 m (8' 6")	2.6 m (8' 6")	3.2 m (10' 6")	3.9m (12' 10")
L	m <sup>3</sup>	yd <sup>3</sup>	mm	ft/in	kg	lb	EA						
Direct fit Buckets	General purpose	870	0.87	1.1	750	2' 6"	1 274	2,808	3	C	C	C	C
		1 420	1.42	1.9	1 200	4' 0"	1 612	3,554	5	C	C	C	C
		1 920	1.92	2.5	1 500	5' 0"	1 866	4,116	5	C	C	C	C
		870	0.87	1.1	750	2' 6"	1 344	2,963	3	D	D	D	D
		1 670	1.67	2.2	1 350	4' 6"	1 852	4,084	5	D	D	D	D
		1 920	1.92	2.5	1 500	5' 0"	1 959	4,320	5	D	D	D	D
	Heavy duty	1 000	1.00	1.3	900	3' 0"	1 321	2,913	4	C	C	C	C
		1 670	1.67	2.2	1 350	4' 6"	1 679	3,702	5	C	C	C	C
		1 420	1.42	1.9	1 200	4' 0"	1 648	3,634	5	D	D	D	D
		1 670	1.67	2.2	1 350	4' 6"	1 791	3,950	5	D	D	D	D
		1 920	1.92	2.5	1 500	5' 0"	1 921	4,235	5	D	D	D	C
Bucket type		Capacity			Cutting width		Weight		Teeth	EC380EL			
										6.2 m (20' 4") Boom		6.45 m (21' 2") Boom	
										800 mm (24") shoe, 6 700 kg (1,4770 lb) counterweight			
										2.6 m (8' 6")	2.6 m (8' 6")	3.2 m (10' 6")	3.9 m (12' 10")
L	m <sup>3</sup>	yd <sup>3</sup>	mm	ft/in	kg	lb	EA						
Direct fit Buckets	General purpose	870	0.87	1.1	750	2' 6"	1 176	2,593	3	C	C	C	C
		1 000	1.00	1.3	900	3' 0"	1 271	2,802	4	C	C	C	C
		1 180	1.18	1.5	1 050	3' 6"	1 460	3,218	4	C	C	C	C
		1 420	1.42	1.9	1 200	4' 0"	1 612	3,553	5	C	C	C	C
		1 670	1.67	2.2	1 350	4' 6"	1 726	3,806	5	C	C	C	C
		1 920	1.92	2.5	1 500	5' 0"	1 866	4,115	5	C	C	C	C
	Heavy duty	2 330	2.33	3.0	1 750	5' 9"	1 967	4,336	5	C	C	C	B
		870	0.87	1.1	750	2' 6"	1 344	2,962	3	D	D	D	D
		1 000	1.00	1.3	900	3' 0"	1 425	3,142	4	D	D	D	D
		1 420	1.42	1.9	1 200	4' 0"	1 699	3,746	5	D	D	D	D
		1 670	1.67	2.2	1 350	4' 6"	1 852	4,083	5	D	D	D	D
		1 920	1.92	2.5	1 500	5' 0"	1 970	4,342	5	D	D	D	C
Direct fit Buckets (UQC interface)	General purpose	2 330	2.33	3.0	1 750	5' 9"	2 175	4,795	5	D	B	B	B
		870	0.87	1.1	750	2' 6"	1 176	2,593	3	C	C	C	C
		1 000	1.00	1.3	900	3' 0"	1 271	2,802	4	C	C	C	C
		1 420	1.42	1.9	1 200	4' 0"	1 514	3,338	5	C	C	C	C
		1 670	1.67	2.2	1 350	4' 6"	1 629	3,591	5	C	C	C	C
		1 920	1.92	2.5	1 500	5' 0"	1 866	4,115	5	C	C	C	B
	Heavy duty	2 330	2.33	3.0	1 750	5' 9"	1 967	4,336	5	C	B	A	X
		870	0.87	1.1	750	2' 6"	1 352	2,980	3	D	D	D	D
		1 000	1.00	1.3	900	3' 0"	1 425	3,142	4	D	D	D	D
		1 420	1.42	1.9	1 200	4' 0"	1 699	3,746	5	D	D	D	D
		1 670	1.67	2.2	1 350	4' 6"	1 852	4,083	5	D	D	D	B
		1 920	1.92	2.5	1 500	5' 0"	1 970	4,342	5	D	D	B	A
Quick coupler Buckets (S3 Quick coupler)	General purpose	2 330	2.33	3.0	1 750	5' 9"	2 175	4,795	5	B	B	A	X
		1 000	1.00	1.3	900	3' 0"	1 239	2,731	4	C	C	C	C
		1 180	1.18	1.5	1 050	3' 6"	1 412	3,113	4	C	C	C	C
		1 420	1.42	1.9	1 200	4' 0"	1 482	3,268	5	C	C	C	C
		1 670	1.67	2.2	1 350	4' 6"	1 597	3,520	5	C	C	C	C
		1 920	1.92	2.5	1 500	5' 0"	1 720	3,792	5	C	C	C	C
	Heavy duty	2 330	2.33	3.0	1 750	5' 9"	1 911	4,214	5	C	C	B	A
		1 000	1.00	1.3	900	3' 0"	1 393	3,071	4	D	D	D	D
		1 420	1.42	1.9	1 200	4' 0"	1 648	3,633	5	D	D	D	D
		1 670	1.67	2.2	1 350	4' 6"	1 791	3,949	5	D	D	D	D
		1 920	1.92	2.5	1 500	5' 0"	1 921	4,235	5	D	D	D	B
		2 330	2.33	3.0	1 750	5' 9"	2 119	4,673	5	C	B	B	A
Quick coupler Buckets (UQC38 Quick coupler)	Heavy duty	830	0.83	1.1	750	2' 6"	1 104	2,434	3	D	D	D	D
		1 000	1.00	1.3	900	3' 0"	1 202	2,650	3	D	D	D	D
		1 240	1.24	1.6	1 100	3' 8"	1 370	3,020	4	D	D	D	D
		1 450	1.45	1.9	1 200	4' 0"	1 435	3,164	4	D	D	D	D
		1 670	1.67	2.2	1 350	4' 6"	1 570	3,461	5	D	D	D	C
		1 910	1.91	2.5	1 500	5' 0"	1 667	3,675	5	D	D	C	B
	2 290	2.29	3.0	1 750	5' 9"	1 830	4,034	5	C	B	B	A	
	2 530	2.53	3.3	1 900	6' 3"	1 958	4,317	5	B	B	A	X	

Bucket size for EC380ELR is 1.6 m<sup>3</sup> / 2.1 yd<sup>3</sup>

Please consult with your Volvo dealer for the proper match of buckets and attachments to suit the application.

The recommendations are given as a guide only, based on typical operation conditions,

Bucket capacity based on ISO 7451, heaped material with a 1:1 angle of repose.

X : Not recommended

### Maximum material density

	kg/m <sup>3</sup>	lb/yd <sup>3</sup>	
A	1 200 – 1 300	2,000 – 2,200	Coal, Caliche, Shale
B	1 400 – 1 600	2,300 – 2,700	Wet earth and clay, Limestone, Sandstone
C	1 700 – 1 800	2,800 – 3,100	Granite, Wet sand, Well blasted rock
D	1 900	> 3200	Wet mud, Iron ore

## GROUND PRESSURE

Description	Shoe width		Operating weight		Ground pressure		Operating weight		Ground pressure	
	mm	in	kg	lb	kPa	psi	kg	lb	kPa	psi
Triple grouser	600	24	37 150	81,920	67.8	9.8	36 260	79,950	66.1	9.6
	700	28	37 780	83,300	59.1	8.6	36 890	81,340	57.7	8.4
	800	32	38 160	84,140	52.2	7.6	37 270	82,180	51.0	7.4
	900	36	38 660	85,250	47.0	6.8	37 770	83,280	45.9	6.7
Triple grouser(HD)	600	24	37 870	83,500	69.1	10.0	36 980	81,540	67.4	9.8
			EC380E with LC undercarriage, 6.2 m/20' 4" ME boom, 2.6 m/8' 6" ME arm, 1 574 kg/3,470 lb bucket, 6 700 kg/14,770 lb counterweight				EC350E with LC undercarriage, 6.45 m/21' 2" boom, 3.2 m/10' 6" arm, 1 574 kg/3,470 lb bucket, 6 200 kg/13,670 lb counterweight			
Description	Shoe width		Operating weight		Ground pressure		Operating weight		Ground pressure	
	mm	in	kg	lb	kPa	psi	kg	lb	kPa	psi
Triple grouser	600	24	36 760	81,060	67.0	9.7	36 950	81,470	67.4	9.8
	700	28	37 390	82,440	58.5	8.5	37 580	82,860	58.7	8.5
	800	32	37 770	83,280	51.7	7.5	37 960	83,700	51.9	7.5
	900	36	38 270	84,390	46.5	6.7	38 460	84,800	46.8	6.8
Triple grouser(HD)	600	24	37 480	82,640	68.4	9.9	37 670	83,060	68.7	10.0
			EC350E with LC undercarriage, 6.45 m/21' 2" boom, 3.2 m/10' 6" arm, 1 574 kg/3,470 lb bucket, 6 700 kg/14,770 lb counterweight				EC350E with LC undercarriage, 6.45 m/21' 2" boom, 3.9 m/12' 10" arm, 1 574 kg/3,470 lb bucket, 6 700 kg/14,770 lb counterweight			
Description	Shoe width		Operating weight		Ground pressure		Operating weight		Ground pressure	
	mm	in	kg	lb	kPa	psi	kg	lb	kPa	psi
Triple grouser	600	24	38 356	84,570	70.0	10.1	38 856	85,680	70.9	10.3
	700	28	38 798	85,550	60.7	8.8	39 298	86,650	61.4	8.9
	800	32	39 248	86,540	53.7	7.8	39 748	87,640	54.4	7.9
	900	36	39 692	87,520	48.3	7.0	40 192	88,620	48.9	7.1
Triple grouser(HD)	600	24	38 783	85,520	70.7	10.3	39 283	86,620	71.6	10.4
Double grouser	600	24	38 633	85,190	70.5	10.2	39 133	86,290	71.4	10.3
			EC380E with LC undercarriage, 6.45 m/21' 2" boom, 3.2 m/10' 6" arm, 1 574 kg/3,470 lb bucket, 6 200 kg/13,670 lb counterweight				EC380E with LC undercarriage, 6.45 m/21' 2" boom, 3.9 m/12' 10" arm, 1 574 kg/3,470 lb bucket, 6 700 kg/14,770 lb counterweight			
Description	Shoe width		Operating weight		Ground pressure		Operating weight		Ground pressure	
	mm	in	kg	lb	kPa	psi	kg	lb	kPa	psi
Triple grouser	600	24	39 406	86,890	71.9	10.4	40 732	89,810	74.3	10.8
	700	28	39 833	87,830	72.7	10.5	41 159	90,760	75.1	10.9
	800	32	39 848	87,860	62.3	9.0	41 174	90,790	64.4	9.3
	900	36	40 298	88,860	55.1	8.0	41 624	91,780	56.9	8.3
Triple grouser(HD)	600	24	40 742	89,840	49.5	7.2	42 068	92,760	51.2	7.4
Double grouser	600	24	39 683	87,500	72.4	10.5	41 009	90,420	74.8	10.8
			EC380E with LC undercarriage, 6.45 m/21' 2" boom, 3.2 m/10' 6" arm, 1 574 kg/3,470 lb bucket, 7 250 kg/15,980 lb counterweight				EC380ELR with LC undercarriage, 8.5 m /27' 11" boom, 5.0 m/16' 5" arm, 1 096 kg/2,415 lb bucket, 8 200 kg/18,080 lb counterweight			

# Specifications.

## LIFTING CAPACITY EC350E

Lifting capacity at the arm end without bucket.

For lifting capacity including bucket, simply subtract actual weight of the direct fit bucket or the bucket with quick coupler from the following values.

	Lifting hook related to ground level	1.5 m, 5 ft		3.0 m, 10 ft		4.5 m, 15 ft		6.0 m, 20 ft		7.5 m, 25 ft		9.0 m, 30 ft		Max. Reach		max.	
		Along UC	Across UC	Along UC	Across UC	Along UC	Across UC	Along UC	Across UC	Along UC	Across UC	Along UC	Across UC	Along UC	Across UC		
Boom: 6.2 m (20' 4") Arm: 2.6 (8' 6") Shoe: 800 mm (32") CWT: 6 200 kg (13,670 lb)	7.5 m	kg	-	-	-	-	-	*10 700	*10 700	-	-	-	-	*10 880	9 580	6.7 m	
	25 ft	lb	-	-	-	-	-	-	*23,670	*23,670	-	-	-	-	*24,040	21 670	21.7 ft
	6 m	kg	-	-	-	-	-	-	*11 230	*11 230	*10 740	7 890	-	-	*10 770	7 570	7.7 m
	20 ft	lb	-	-	-	-	-	-	*24,500	*24,500	*23,740	16,930	-	-	*23,750	16,890	25.0 ft
	4.5 m	kg	-	-	-	-	*15 870	*15 870	*12 680	*10 920	*11 200	7 730	-	-	9 550	6 580	8.3 m
	15 ft	lb	-	-	-	-	*34,100	*34,100	*27,490	23,550	24,150	16,640	-	-	21,170	14,590	27.1 ft
	3 m	kg	-	-	-	-	*19 790	15 770	*14 480	*10 360	*10 940	7 470	-	-	8 900	6 100	8.6 m
	10 ft	lb	-	-	-	-	*42,540	34,050	*31,340	22,370	23,570	16,100	-	-	19,650	13,470	28.1 ft
	1.5 m	kg	-	-	-	-	*22 290	14 950	15 010	9 900	*10 680	7 230	-	-	8 730	5 960	8.6 m
	5 ft	lb	-	-	-	-	*48,160	32,220	32,310	21,370	23,010	15,590	-	-	19,260	13,140	28.2 ft
	0 m	kg	-	-	-	-	*22 820	14 680	14 720	9 640	*10 510	7 080	-	-	9 040	6 140	8.3 m
	0 ft	lb	-	-	-	-	*49,500	31,590	31,660	20,790	22,660	15,270	-	-	19,940	13,530	27.3 ft
	-1.5 m	kg	-	-	*17 820	*17 820	*22 000	14 700	14 650	9 580	*10 500	7 060	-	-	9 970	6 740	7.8 m
	-5 ft	lb	-	-	*40,560	*40,560	*47,770	31,620	31,510	20,660	22,650	15,270	-	-	22,030	14,890	25.5 ft
	-3 m	kg	-	-	*26 470	*26 470	*19 840	14 930	14 810	9 730	-	-	-	-	12 110	8 110	6.9 m
-10 ft	lb	-	-	*57,500	*57,500	*42,950	32,140	31,890	21,000	-	-	-	-	26,930	18,040	22.4 ft	
-4.5 m	kg	-	-	-	-	*15 280	*15 280	-	-	-	-	-	-	*12 270	11 800	5.4 m	
-15 ft	lb	-	-	-	-	*32,470	*32,470	-	-	-	-	-	-	*26,940	26,740	17.4 ft	
Boom: 6.45 m (21' 2") Arm: 2.6 m (8' 6") Shoe: 800 mm (32") CWT: 6 200 kg (13,670 lb)	7.5 m	kg	-	-	-	-	-	*10 330	*10 330	-	-	-	-	*10 490	8 920	7.0 m	
	25 ft	lb	-	-	-	-	-	-	*22,780	*22,780	-	-	-	-	*23,170	20,130	22.7 ft
	6 m	kg	-	-	-	-	-	-	*11 090	*11 090	*10 430	7 950	-	-	*10 350	7 190	8.0 m
	20 ft	lb	-	-	-	-	-	-	*24,150	*24,150	*22,950	17,080	-	-	*23,020	16,020	25.9 ft
	4.5 m	kg	-	-	-	-	*16 200	*16 200	*12 670	*10 880	*11 060	7 750	-	-	9 120	6 310	8.5 m
	15 ft	lb	-	-	-	-	*34,740	*34,740	*27,440	23,480	*24,110	16,700	-	-	20,200	13,990	27.9 ft
	3 m	kg	-	-	-	-	-	-	*14 550	*10 330	*10 940	7 490	-	-	8 540	5 880	8.8 m
	10 ft	lb	-	-	-	-	-	-	*31,460	22,310	23,570	16,150	-	-	18,850	12,980	28.9 ft
	1.5 m	kg	-	-	-	-	-	-	14 970	9 900	*10 680	7 250	-	-	8 390	5 750	8.8 m
	5 ft	lb	-	-	-	-	-	-	32,230	21,360	23,010	15,650	-	-	18,500	12,680	29.0 ft
	0 m	kg	-	-	-	-	*21 890	14 710	14 700	9 660	*10 520	7 100	-	-	8 670	5 910	8.6 m
	0 ft	lb	-	-	-	-	*47,710	31,650	31,630	20,840	22,660	15,330	-	-	19,110	13,040	28.2 ft
	-1.5 m	kg	-	-	*14 940	*14 940	*22 090	14 750	14 640	9 610	*10 490	7 080	-	-	9 490	6 450	8.1 m
	-5 ft	lb	-	-	*32,100	*32,100	*47,970	31,730	31,500	20,720	22,620	15,290	-	-	20,970	14,250	26.4 ft
	-3 m	kg	-	-	*26 570	*26 570	*20 130	14 970	14 780	9 730	-	-	-	-	11 330	7 650	7.2 m
-10 ft	lb	-	-	*57,790	*57,790	*43,610	32,210	31,820	21,010	-	-	-	-	25,180	17,000	23.4 ft	
-4.5 m	kg	-	-	*21 150	*21 150	*16 220	15 430	-	-	-	-	-	-	*12 240	10 650	5.8 m	
-15 ft	lb	-	-	*45,470	*45,470	*34,700	32,250	-	-	-	-	-	-	*26,920	24,030	18.7 ft	
Boom: 6.45 m (21' 2") Arm: 3.2 m (10' 6") Shoe: 800 mm (32") CWT: 6 200 kg (13,670 lb)	7.5 m	kg	-	-	-	-	-	-	-	*9 400	8 200	-	-	*8 190	7 880	7.7 m	
	25 ft	lb	-	-	-	-	-	-	-	*20,720	18,080	-	-	*18,140	17,710	24.9 ft	
	6 m	kg	-	-	-	-	-	-	-	-	*9 630	8 130	-	-	*7 980	6 540	8.5 m
	20 ft	lb	-	-	-	-	-	-	-	-	*21,140	17,490	-	-	*17,610	14,560	27.9 ft
	4.5 m	kg	-	-	-	-	*14 530	*14 530	*11 770	11 130	*10 410	7 910	8 490	5 900	*8 060	5 820	9.1 m
	15 ft	lb	-	-	-	-	*31,220	*31,220	*25,510	24,010	*22,710	17,040	18,720	13,010	*17,750	12,900	29.7 ft
	3 m	kg	-	-	-	-	*18 730	16 150	*13 790	10 570	11 080	7 620	8 360	5 780	7 890	5 460	9.3 m
	10 ft	lb	-	-	-	-	*40,250	34,860	*29,830	22,810	23,870	16,440	17,990	12,450	17,420	12,050	30.6 ft
	1.5 m	kg	-	-	-	-	*21 810	15 240	15 180	10 080	*10 790	7 360	8 220	5 650	7 760	5 340	9.4 m
	5 ft	lb	-	-	-	-	*47,070	32,850	32,660	21,760	23,250	15,870	17,710	12,180	17,110	11,780	30.7 ft
	0 m	kg	-	-	-	-	*22 980	14 860	14 830	9 770	*10 580	7 170	8 120	5 560	7 970	5 460	9.1 m
	0 ft	lb	-	-	-	-	*49,790	31,970	31,900	21,080	22,800	15,460	17,900	12,260	17,570	12,040	29.9 ft
	-1.5 m	kg	*10 640	*10 640	*15 150	*15 150	*22 740	14 790	14 690	9 650	*10 490	7 080	-	-	8 600	5 870	8.6 m
	-5 ft	lb	*23,470	*23,470	*34,280	*34,280	*49,330	31,810	31,590	20,810	22,610	15,290	-	-	19,000	12,980	28.3 ft
	-3 m	kg	*17 630	*17 630	*23 890	*23 890	*21 310	14 920	14 740	9 700	*10 560	7 140	-	-	9 970	6 780	7.8 m
-10 ft	lb	*39,510	*39,510	*54,150	*54,150	*46,180	32,090	31,710	20,920	22,780	15,450	-	-	22,120	15,030	25.5 ft	
-4.5 m	kg	-	-	*24 740	*24 740	*18 290	15 250	*13 720	9 940	-	-	-	-	*12 050	8 800	6.6 m	
-15 ft	lb	-	-	*53,320	*53,320	*39,340	32,850	*29,220	21,500	-	-	-	-	*26,590	19,760	21.3 ft	
9 m	kg	-	-	-	-	-	-	-	-	-	-	-	-	*6 930	*6 930	7.3 m	
30 ft	lb	-	-	-	-	-	-	-	-	-	-	-	-	*15,430	*15,430	23.3 ft	
Boom: 6.45 m (21' 2") Arm: 3.9 m (12' 10") Shoe: 800 mm (32") CWT: 6 200 kg (13,670 lb)	7.5 m	kg	-	-	-	-	-	-	-	*8 240	*8 240	-	-	*6 480	*6 480	8.4 m	
	25 ft	lb	-	-	-	-	-	-	-	*18,250	17,990	-	-	*14,330	*14,330	27.4 ft	
	6 m	kg	-	-	-	-	-	-	-	-	*8 610	8 250	*7 710	6 060	*6 330	5 780	9.2 m
	20 ft	lb	-	-	-	-	-	-	-	-	*18,870	17,760	*14,690	12,990	*13,960	12,860	30.2 ft
	4.5 m	kg	-	-	-	-	-	-	*10 490	*10 490	*9 490	7 990	8 560	5 960	*6 380	5 210	9.7 m
	15 ft	lb	-	-	-	-	-	-	*22,750	*22,750	*20,690	17,220	18,400	12,810	*14,060	11,530	31.9 ft
	3 m	kg	-	-	-	-	*16 610	16 570	*12 610	10 710	*10 640	7 670	8 380	5 790	*6 630	4 900	10.0 m
	10 ft	lb	-	-	-	-	*35,710	*35,710	*27,280	23,110	*23,140	16,530	18,040	12,470	*14,570	10,810	32.7 ft
	1.5 m	kg	-	-	-	-	*20 290	15 420	*14 630	10 140	*10 800	7 350	8 200	5 620	6 980	4 790	10.0 m
	5 ft	lb	-	-	-	-	*43,770	33,240	*31,670	21,870	23,260	15,850	17,650	12,110	15,400	10,560	32.8 ft
	0 m	kg	-	-	*9 360	*9 360	*22 310	14 800	14 800	9 730	*10 530	7 100	8 050	5 480	7 130	4 860	9.8 m
	0 ft	lb	-	-	*21,280	*21,280	*48,290	31,850	31,820	20,980	22,680	15,320	17,340	11,820	15,720	10,730	32.1 ft
	-1.5 m	kg	*9 550	*9 550	*14 260	*14 260	*22 790	14 570	14 560	9 520	*10 370	6 960	7 980	5 420	7 600	5 170	9.3 m
	-5 ft	lb	*21,320	*21,320	*32,220	*32,220	*49,410	31,350	31,300	20,520	22,350	15,020	17,210	11,700	16,780	11,420	30.6 ft
	-3 m	kg	*14 870	*14 870	*20 600	*20 600	*22 020	14 600	14 520	9 490	*10 360	6 950	-	-	8 580	5 820	8.6 m
-10 ft	lb	*33,290	*33,290	*46,610	*46,610	*47,720	31,420	31,230	20,460	22,330	15,000	-	-	19,020	12,910	28.0 ft	
-4.5 m	kg	*21 230	*21 230	*27 870	*27 870	*19 860	14 850	14 690	9 640	-	-	-	-	*10 630	7 170	7.5 m	
-15 ft	lb	*47,770	*47,770	*60,150	*60,150	*42,830	31,970	31,630	20,810	-	-	-	-	*23,770	16,030	24.3 ft	
-6 m	kg	-	-	*21 090	*21 090	*15 340	*15 340	-	-	-	-	-	-	*11 490	10 710	5.7 m	
-20 ft	lb	-	-	*44,720	*44,720	*32,370	*32,370	-	-	-	-	-	-	*25,300	24,550	18.4 ft	
Boom: 6.2 m (20' 4") Arm: 2.6 m (8' 6") Shoe: 800 mm (32") CWT: 6 700 kg (14,770 lb)	7.5 m	kg	-	-	-	-	-	*10 700	*10 700	-	-	-	-	*10 880	9 910	6.7 m	
	25 ft	lb	-	-	-	-	-	-	*23,670	*23,670	-	-	-	-	*24,040	22,410	21.7 ft
	6 m	kg	-	-	-												

## LIFTING CAPACITY EC350E

Lifting capacity at the arm end without bucket.

For lifting capacity including bucket, simply subtract actual weight of the direct fit bucket or the bucket with quick coupler from the following values.

	Lifting hook related to ground level	1.5 m, 5 ft		3.0 m, 10 ft		4.5 m, 15 ft		6.0 m, 20 ft		7.5 m, 25 ft		9.0 m, 30 ft		Max. Reach		max.	
		Along UC	Across UC	Along UC	Across UC	Along UC	Across UC	Along UC	Across UC	Along UC	Across UC	Along UC	Across UC	Along UC	Across UC		
Boom: 6.45 m (21' 2") Arm: 2.6 m (8' 6") Shoe: 800 mm (32") CWLT: 6 700 kg (14,770 lb)	7.5 m	kg	-	-	-	-	-	*10 330	*10 330	-	-	-	-	*10 490	9 230	7.0 m	
	25 ft	lb	-	-	-	-	-	*22 780	*22 780	-	-	-	-	*23 170	20 820	22.7 ft	
	6 m	kg	-	-	-	-	-	*11 090	*11 090	*10 430	8 230	-	-	*10 440	7 450	8.0 m	
	20 ft	lb	-	-	-	-	-	*24 150	*24 150	*22 950	17 690	-	-	*23 020	16 610	25.9 ft	
	4.5 m	kg	-	-	-	-	*16 200	*16 200	*12 670	11 260	*11 060	8 030	-	9 410	6 550	8.5 m	
	15 ft	lb	-	-	-	-	*34 740	*34 740	*27 440	24 290	*24 110	17 310	-	20 850	14 520	27.9 ft	
	3 m	kg	-	-	-	-	-	*14 550	10 710	11 290	7 770	-	-	8 820	6 110	8.8 m	
	10 ft	lb	-	-	-	-	-	*31 460	23 120	24 310	16 760	-	-	19 460	13 490	28.9 ft	
	1.5 m	kg	-	-	-	-	-	-	15 450	10 270	11 030	7 530	-	-	8 670	5 980	8.8 m
	5 ft	lb	-	-	-	-	-	-	33 250	22 180	23 760	16 260	-	-	19 120	13 190	29.0 ft
	0 m	kg	-	-	-	-	*21 890	15 270	15 180	10 040	10 860	7 390	-	8 960	6 150	8.6 m	
	0 ft	lb	-	-	-	-	*49 710	32 860	32 660	21 650	23 410	15 940	-	19 750	13 570	28.2 ft	
	-1.5 m	kg	-	-	*14 940	*14 940	*22 090	15 320	15 120	9 980	10 830	7 360	-	9 810	6 710	8.1 m	
	-5 ft	lb	-	-	*34 100	*34 100	*47 970	32 940	32 530	21 530	23 360	15 900	-	21 670	14 830	26.4 ft	
	-3 m	kg	-	-	*26 570	*26 570	*20 130	15 530	15 260	10 110	-	-	-	11 700	7 950	7.2 m	
-10 ft	lb	-	-	*57 790	*57 790	*43 610	33 420	32 850	21 820	-	-	-	26 000	17 660	23.4 ft		
-4.5 m	kg	-	-	*21 150	*21 150	*16 220	15 990	-	-	-	-	-	*12 240	11 040	5.8 m		
-15 ft	lb	-	-	*45 470	*45 470	*34 700	34 460	-	-	-	-	-	*26 920	24 920	18.7 ft		
Boom: 6.45 m (21' 2") Arm: 3.2 m (10' 6") Shoe: 800 mm (32") CWLT: 6 700 kg (14,770 lb)	7.5 m	kg	-	-	-	-	-	-	-	*9 400	8 480	-	-	*8 190	8 150	7.7 m	
	25 ft	lb	-	-	-	-	-	-	-	*20 720	18 690	-	-	*18 140	*18 140	24.9 ft	
	6 m	kg	-	-	-	-	-	-	-	*9 630	8 410	-	-	*7 980	6 780	8.5 m	
	20 ft	lb	-	-	-	-	-	-	-	*21 140	18 100	-	-	*17 610	15 100	27.9 ft	
	4.5 m	kg	-	-	-	-	*14 530	*14 530	*11 770	11 510	*10 410	8 190	8 760	6 130	*8 060	6 050	9.1 m
	15 ft	lb	-	-	-	-	*31 220	*31 220	*25 510	24 830	*22 710	17 650	19 310	13 510	*17 750	13 400	29.7 ft
	3 m	kg	-	-	-	-	*18 730	16 710	*13 790	10 950	11 430	7 900	8 630	6 010	8 150	5 670	9.3 m
	10 ft	lb	-	-	-	-	*40 250	36 070	*29 830	23 620	24 620	17 050	18 580	12 940	18 000	12 530	30.6 ft
	1.5 m	kg	-	-	-	-	*21 810	15 800	*15 580	10 460	11 140	7 640	8 490	5 880	8 020	5 550	9.4 m
	5 ft	lb	-	-	-	-	*47 070	34 060	*33 690	22 570	23 990	16 480	18 300	12 670	17 680	12 250	30.7 ft
	0 m	kg	-	-	-	-	*22 980	15 420	15 300	10 150	10 930	7 450	8 400	5 790	8 230	5 680	9.1 m
	0 ft	lb	-	-	-	-	*49 790	33 180	32 920	21 890	23 550	16 070	18 520	12 760	18 160	12 530	29.9 ft
	-1.5 m	kg	*10 640	*10 640	*15 150	*15 150	*22 740	15 350	15 170	10 030	10 840	7 370	-	8 890	6 110	8.6 m	
	-5 ft	lb	*23 470	*23 470	*34 280	*34 280	*49 330	33 020	32 620	21 620	23 360	15 900	-	19 640	13 500	28.3 ft	
	-3 m	kg	*17 630	*17 630	*23 890	*23 890	*21 310	15 480	15 220	10 070	10 900	7 430	-	10 300	7 040	7.8 m	
-10 ft	lb	*39 510	*39 510	*54 150	*54 150	*46 180	33 300	32 740	21 730	23 530	16 060	-	22 850	15 630	25.5 ft		
-4.5 m	kg	-	-	*24 740	*24 740	*18 290	15 820	*13 720	10 320	-	-	-	*12 050	9 140	6.6 m		
-15 ft	lb	-	-	*53 320	*53 320	*39 340	34 060	*29 220	22 310	-	-	-	*26 590	20 510	21.3 ft		
Boom: 6.45 m (21' 2") Arm: 3.9 m (12' 10") Shoe: 800 mm (32") CWLT: 6 200 kg (13,670 lb)	9 m	kg	-	-	-	-	-	-	-	-	-	-	-	6 930	*6 930	7.3 m	
	30 ft	lb	-	-	-	-	-	-	-	-	-	-	-	*15 430	*15 430	23.3 ft	
	7.5 m	kg	-	-	-	-	-	-	-	*8 240	*8 240	-	-	*6 480	*6 480	8.4 m	
	25 ft	lb	-	-	-	-	-	-	-	*18 250	*18 250	-	-	*14 330	*14 330	27.4 ft	
	6 m	kg	-	-	-	-	-	-	-	*8 610	8 530	*7 710	6 290	*6 330	6 000	9.2 m	
	20 ft	lb	-	-	-	-	-	-	-	*18 870	18 370	*14 690	13 480	*13 960	13 350	30.2 ft	
	4.5 m	kg	-	-	-	-	-	-	*10 490	*10 490	*9 490	8 280	8 830	6 180	*6 380	5 410	9.7 m
	15 ft	lb	-	-	-	-	-	-	*22 750	*22 750	*20 690	17 830	18 990	13 300	*14 060	11 980	31.9 ft
	3 m	kg	-	-	-	-	*16 610	*16 610	*12 610	11 090	*10 640	7 950	8 650	6 020	*6 630	5 100	10.0 m
	10 ft	lb	-	-	-	-	*35 710	*35 710	*27 280	23 930	*23 140	17 150	18 630	12 960	*14 570	11 250	32.7 ft
	1.5 m	kg	-	-	-	-	*20 290	15 990	*14 630	10 510	11 150	7 630	8 470	5 850	*7 060	4 990	10.0 m
	5 ft	lb	-	-	-	-	*43 770	34 450	*31 670	22 680	24 010	16 470	18 240	12 600	*15 550	11 000	32.8 ft
	0 m	kg	-	-	*9 360	*9 360	*22 310	15 360	15 270	10 110	10 880	7 390	8 320	5 710	7 370	5 070	9.8 m
	0 ft	lb	-	-	*21 280	*21 280	*48 290	33 060	32 850	21 790	23 430	15 930	17 930	12 310	16 260	11 180	32.1 ft
	-1.5 m	kg	*9 550	*9 550	*14 260	*14 260	*22 790	15 130	15 030	9 890	10 720	7 250	8 250	5 650	7 860	5 390	9.3 m
-5 ft	lb	*21 320	*21 320	*32 220	*32 220	*49 410	32 560	32 330	21 330	23 100	15 630	17 800	12 190	17 360	11 900	30.6 ft	
-3 m	kg	*14 870	*14 870	*20 600	*20 600	*22 020	15 170	15 000	9 860	10 710	7 230	-	8 870	6 060	8.6 m		
-10 ft	lb	*33 290	*33 290	*46 610	*46 610	*47 720	32 630	32 260	21 270	23 080	15 610	-	19 660	13 440	28.0 ft		
-4.5 m	kg	*21 230	*21 230	*27 870	*27 870	*19 860	15 410	*14 970	10 010	-	-	-	10 980	7 460	7.5 m		
-15 ft	lb	*47 770	*47 770	*60 150	*60 150	*42 830	33 180	*32 180	21 620	-	-	-	24 550	16 670	24.3 ft		
-6 m	kg	-	-	*21 090	*21 090	*15 340	*15 340	-	-	-	-	-	*11 490	11 110	5.7 m		
-20 ft	lb	-	-	*44 720	*44 720	*32 370	*32 370	-	-	-	-	-	*25 300	*25 300	18.4 ft		
Boom: 6.2 m (20' 4") Arm: 2.6 m (8' 6") Shoe: 900 mm (36") CWLT: 6 200 kg (13,670 lb)	7.5 m	kg	-	-	-	-	-	*10 700	*10 700	-	-	-	-	*10 880	9 670	6.7 m	
	25 ft	lb	-	-	-	-	-	*23 670	*23 670	-	-	-	-	*24 040	21 860	21.7 ft	
	6 m	kg	-	-	-	-	-	-	*11 230	*11 230	*10 740	7 970	-	*10 770	7 640	7.7 m	
	20 ft	lb	-	-	-	-	-	-	*24 500	*24 500	*23 740	17 090	-	*23 750	17 050	25.0 ft	
	4.5 m	kg	-	-	-	-	*15 870	*15 870	*12 680	11 020	*11 200	7 800	-	9 650	6 650	8.3 m	
	15 ft	lb	-	-	-	-	*34 100	*34 100	*27 490	23 760	24 390	16 800	-	21 380	14 730	27.1 ft	
	3 m	kg	-	-	-	-	*19 790	15 920	*14 480	10 460	11 050	7 540	-	8 990	6 160	8.6 m	
	10 ft	lb	-	-	-	-	*42 540	34 360	*31 340	22 580	23 800	16 260	-	19 850	13 610	28.1 ft	
	1.5 m	kg	-	-	-	-	*22 290	15 100	15 170	10 000	10 790	7 300	-	8 830	6 020	8.6 m	
	5 ft	lb	-	-	-	-	*48 160	32 540	32 640	21 580	23 250	15 750	-	19 460	13 270	28.2 ft	
	0 m	kg	-	-	-	-	*22 820	14 830	14 870	9 740	10 620	7 150	-	9 140	6 200	8.3 m	
	0 ft	lb	-	-	-	-	*49 500	31 900	31 980	21 000	22 890	15 430	-	20 150	13 670	27.3 ft	
	-1.5 m	kg	-	-	*17 820	*17 820	*22 000	14 850	14 800	9 680	10 610	7 140	-	10 080	6 810	7.8 m	
	-5 ft	lb	-	-	*40 560	*40 560	*47 770	31 940	31 830	20 870	22 890	15 430	-	22 270	15 040	25.5 ft	
	-3 m	kg	-	-	*26 470	*26 470	*19 840	15									

# Specifications.

## LIFTING CAPACITY EC350E

Lifting capacity at the arm end without bucket.

For lifting capacity including bucket, simply subtract actual weight of the direct fit bucket or the bucket with quick coupler from the following values.

	Lifting hook related to ground level	1.5 m, 5 ft		3.0 m, 10 ft		4.5 m, 15 ft		6.0 m, 20 ft		7.5 m, 25 ft		9.0 m, 30 ft		Max. Reach		max.
		Along UC	Across UC	Along UC	Across UC	Along UC	Across UC	Along UC	Across UC	Along UC	Across UC	Along UC	Across UC	Along UC	Across UC	
Boom: 6.45 m (21' 2") Arm: 3.2 m (10' 6") Shoe: 900 mm (36") CWT: 6 200 kg (13,670 lb)	7.5 m kg	-	-	-	-	-	-	-	-	9 400	8 270	-	-	8 190	7 950	7.7 m
	25 ft lb	-	-	-	-	-	-	-	-	20,720	18,230	-	-	18,140	17,870	24.9 ft
	6 m kg	-	-	-	-	-	-	-	-	9 630	8 200	-	-	7 980	6 600	8.5 m
	20 ft lb	-	-	-	-	-	-	-	-	21,140	17,650	-	-	17,610	14,700	27.9 ft
	4.5 m kg	-	-	-	-	14 530	14 530	11 770	11 230	10 410	7 980	8 580	5 960	8 060	5 880	9.1 m
	15 ft lb	-	-	-	-	31,220	31,220	25,510	24,230	22,710	17,190	18,910	13,140	17,750	13,030	29.7 ft
	3 m kg	-	-	-	-	18 730	16 300	13 790	10 670	11 190	7 700	8 450	5 840	7 970	5 510	9.3 m
	10 ft lb	-	-	-	-	40,250	35,170	29,830	23,020	24,110	16,600	18,180	12,580	17,600	12,170	30.6 ft
	1.5 m kg	-	-	-	-	21 810	15 390	15 330	10 180	10 900	7 430	8 310	5 710	7 840	5 400	9.4 m
	5 ft lb	-	-	-	-	47,070	33,160	32,990	21,970	23,480	16,030	17,890	12,310	17,290	11,900	30.7 ft
	0 m kg	-	-	-	-	22 980	15 000	14 980	9 870	10 690	7 240	8 210	5 620	8 050	5 520	9.1 m
	0 ft lb	-	-	-	-	49,790	32,290	32,220	21,290	23,030	15,620	18,100	12,390	17,760	12,170	29.9 ft
	-1.5 m kg	10 640	10 640	15 150	15 150	22 740	14 930	14 840	9 750	10 600	7 160	-	-	8 690	5 940	8.6 m
	-5 ft lb	23,470	23,470	34,280	34,280	49,330	32,120	31,920	21,020	22,850	15,450	-	-	19,210	13,110	28.3 ft
	-3 m kg	17 630	17 630	23 890	23 890	21 310	15 060	14 890	9 790	10 670	7 220	-	-	10 070	6 850	7.8 m
-10 ft lb	39,510	39,510	54,150	54,150	46,180	32,410	32,040	21,130	23,020	15,600	-	-	22,350	15,190	25.5 ft	
-4.5 m kg	-	-	24 740	24 740	18 290	15 400	13 720	10 040	-	-	-	-	12 050	8 890	6.6 m	
-15 ft lb	-	-	53,320	53,320	39,340	33,170	29,220	21,710	-	-	-	-	26,590	19,950	21.3 ft	
9 m kg	-	-	-	-	-	-	-	-	-	-	-	-	6 930	6 930	7.3 m	
30 ft lb	-	-	-	-	-	-	-	-	-	-	-	-	15,430	15,430	23.3 ft	
7.5 m kg	-	-	-	-	-	-	-	-	8 240	8 240	-	-	6 480	6 480	8.4 m	
25 ft lb	-	-	-	-	-	-	-	-	18,250	18,150	-	-	14,330	14,330	27.4 ft	
6 m kg	-	-	-	-	-	-	-	-	8 610	8 330	7 710	6 120	6 330	5 840	9.2 m	
20 ft lb	-	-	-	-	-	-	-	-	18,870	17,920	14,690	13,120	13,960	12,990	30.2 ft	
4.5 m kg	-	-	-	-	-	-	10 490	10 490	9 490	8 070	8 640	6 020	6 380	5 260	9.7 m	
15 ft lb	-	-	-	-	-	-	22,750	22,750	20,690	17,380	18,590	12,930	14,060	11,650	31.9 ft	
3 m kg	-	-	-	-	16 610	16 610	12 610	10 810	10 640	7 740	8 470	5 850	6 630	4 950	10.0 m	
10 ft lb	-	-	-	-	35,710	35,710	27,280	23,320	23,140	16,690	18,220	12,590	14,570	10,930	32.7 ft	
1.5 m kg	-	-	-	-	20 290	15 570	14 630	10 240	10 910	7 430	8 280	5 680	7 060	4 840	10.0 m	
5 ft lb	-	-	-	-	43,770	33,560	31,670	22,080	23,500	16,010	17,840	12,230	15,550	10,670	32.8 ft	
0 m kg	-	-	9 360	9 360	22 310	14 940	14 950	9 830	10 640	7 180	8 130	5 540	7 210	4 920	9.8 m	
0 ft lb	-	-	21,280	21,280	48,290	32,170	32,150	21,190	22,920	15,480	17,530	11,950	15,890	10,850	32.1 ft	
-1.5 m kg	9 550	9 550	14 260	14 260	22 790	14 720	14 710	9 620	10 480	7 040	8 070	5 480	7 680	5 230	9.3 m	
-5 ft lb	21,320	21,320	32,220	32,220	49,410	31,660	31,630	20,730	22,580	15,180	17,400	11,830	16,970	11,540	30.6 ft	
-3 m kg	14 870	14 870	20 600	20 600	22 020	14 750	14 670	9 580	10 470	7 020	-	-	8 670	5 880	8.6 m	
-10 ft lb	33,290	33,290	46,610	46,610	47,720	31,730	31,560	20,670	22,570	15,160	-	-	19,220	13,040	28.0 ft	
-4.5 m kg	21 230	21 230	27 870	27 870	19 860	15 000	14 840	9 730	-	-	-	-	10 740	7 250	7.5 m	
-15 ft lb	47,770	47,770	60,150	60,150	42,830	32,290	31,950	21,020	-	-	-	-	24,020	16,200	24.3 ft	
-6 m kg	-	-	21 090	21 090	15 340	15 340	-	-	-	-	-	-	11 490	10 810	5.7 m	
-20 ft lb	-	-	44,720	44,720	32,370	32,370	-	-	-	-	-	-	25,300	24,790	18.4 ft	
7.5 m kg	-	-	-	-	-	-	10 700	10 700	-	-	-	-	10 880	9 990	6.7 m	
25 ft lb	-	-	-	-	-	-	23,670	23,670	-	-	-	-	24,040	22,600	21.7 ft	
6 m kg	-	-	-	-	-	-	11 230	11 230	10 740	8 250	-	-	10 770	7 920	7.7 m	
20 ft lb	-	-	-	-	-	-	24,500	24,500	23,740	17,700	-	-	23,750	17,660	25.0 ft	
4.5 m kg	-	-	-	-	15 870	15 870	12 680	11 390	11 200	8 080	-	-	9 950	6 900	8.3 m	
15 ft lb	-	-	-	-	34,100	34,100	27,490	24,580	24,470	17,410	-	-	22,050	15,290	27.1 ft	
3 m kg	-	-	-	-	19 790	16 480	14 480	10 840	11 400	7 830	-	-	9 280	6 400	8.6 m	
10 ft lb	-	-	-	-	42,540	35,570	31,340	23,390	24,550	16,870	-	-	20,490	14,140	28.1 ft	
1.5 m kg	-	-	-	-	22 290	15 660	15 640	10 380	11 140	7 590	-	-	9 120	6 260	8.6 m	
5 ft lb	-	-	-	-	48,160	33,750	33,660	22,390	23,990	16,360	-	-	20,100	13,800	28.2 ft	
0 m kg	-	-	-	-	22 820	15 390	15 350	10 120	10 970	7 430	-	-	9 440	6 450	8.3 m	
0 ft lb	-	-	-	-	49,500	33,120	33,010	21,820	23,640	16,040	-	-	20,810	14,220	27.3 ft	
-1.5 m kg	-	-	17 820	17 820	22 000	15 410	15 280	10 050	10 960	7 420	-	-	10 400	7 080	7.8 m	
-5 ft lb	-	-	40,560	40,560	47,770	33,150	32,860	21,680	23,640	16,040	-	-	22,990	15,640	25.5 ft	
-3 m kg	-	-	26 470	26 470	19 840	15 640	15 040	10 200	-	-	-	-	12 530	8 510	6.9 m	
-10 ft lb	-	-	57,500	57,500	42,950	33,660	32,380	22,020	-	-	-	-	27,640	18,920	22.4 ft	
-4.5 m kg	-	-	-	-	15 280	15 280	-	-	-	-	-	-	12 270	12 270	5.4 m	
-15 ft lb	-	-	-	-	32,470	32,470	-	-	-	-	-	-	26,940	26,940	17.4 ft	
7.5 m kg	-	-	-	-	-	-	10 330	10 330	-	-	-	-	10 490	9 310	7.0 m	
25 ft lb	-	-	-	-	-	-	22,780	22,780	-	-	-	-	23,170	21,000	22.7 ft	
6 m kg	-	-	-	-	-	-	11 090	11 090	10 430	8 300	-	-	10 440	7 520	8.0 m	
20 ft lb	-	-	-	-	-	-	24,150	24,150	22,950	17,850	-	-	23,020	16,760	25.9 ft	
4.5 m kg	-	-	-	-	16 200	16 200	12 670	11 360	11 060	8 110	-	-	9 510	6 620	8.5 m	
15 ft lb	-	-	-	-	34,740	34,740	27,440	24,510	24,110	17,470	-	-	21,050	14,660	27.9 ft	
3 m kg	-	-	-	-	-	-	14 550	10 810	11 400	7 840	-	-	8 900	6 170	8.8 m	
10 ft lb	-	-	-	-	-	-	31,460	23,330	24,550	16,920	-	-	19,660	13,630	28.9 ft	
1.5 m kg	-	-	-	-	-	-	15 600	10 370	11 140	7 610	-	-	8 760	6 040	8.8 m	
5 ft lb	-	-	-	-	-	-	33,580	22,390	24,000	16,420	-	-	19,310	13,330	29.0 ft	
0 m kg	-	-	-	-	21 890	15 420	15 330	10 130	10 970	7 460	-	-	9 050	6 220	8.6 m	
0 ft lb	-	-	-	-	49,710	33,170	32,980	21,860	23,650	16,100	-	-	19,950	13,710	28.2 ft	
-1.5 m kg	-	-	14 940	14 940	22 090	15 460	15 270	10 080	10 940	7 430	-	-	9 910	6 780	8.1 m	
-5 ft lb	-	-	34,100	34,100	47,970	33,260	32,850	21,740	23,600	16,060	-	-	21,890	14,970	26.4 ft	
-3 m kg	-	-	26 570	26 570	20 130	15 680	15 410	10 210	-	-	-	-	11 820	8 030	7.2 m	
-10 ft lb	-	-	57,790	57,790	43,610	33,740	33,180	22,030	-	-	-	-	26,260	17,830	23.4 ft	
-4.5 m kg	-	-	21 150	21 150	16 220	16 140	-	-	-	-	-	-	12 240	11 140	5.8 m	
-15 ft lb	-	-	45,470	45,470	34,700	34,700	-	-	-	-	-	-	26,920	25,150	18.7 ft	

Notes: 1. Machine in "Fine Mode-F" (Power Boost) for lifting capacities. 2. The above loads are in compliance with SAE J1097 and ISO 10567 Hydraulic Excavator Lifting Capacity Standards. 3. Rated loads do not exceed 87% of hydraulic lifting capacity or 75% of tipping load. 4. Rated loads marked with an asterisk (\*) are limited by hydraulic capacity rather than tipping load.

## LIFTING CAPACITY EC350E

Lifting capacity at the arm end without bucket.

For lifting capacity including bucket, simply subtract actual weight of the direct fit bucket or the bucket with quick coupler from the following values.

	Lifting hook related to ground level	1.5 m, 5 ft		3.0 m, 10 ft		4.5 m, 15 ft		6.0 m, 20 ft		7.5 m, 25 ft		9.0 m, 30 ft		Max. Reach		max.
		Along UC	Across UC	Along UC	Across UC	Along UC	Across UC	Along UC	Across UC	Along UC	Across UC	Along UC	Across UC	Along UC	Across UC	
Boom: 6.45 m (21' 2") Arm: 3.2 m (10' 6") Shoe: 900 mm (36") CWT: 6 700 kg (14,770 lb)	7.5 m kg	-	-	-	-	-	-	-	-	*9 400	8 550	-	-	*8 190	*8 190	7.7 m
	25 ft lb	-	-	-	-	-	-	-	-	*20,720	18,850	-	-	*18,140	*18,140	24.9 ft
	6 m kg	-	-	-	-	-	-	-	-	*9 630	8 480	-	-	*7 980	6 840	8.5 m
	20 ft lb	-	-	-	-	-	-	-	-	*21,140	18,260	-	-	*17,610	15,240	27.9 ft
	4.5 m kg	-	-	-	-	*14 530	*14 530	*11 770	11 610	*10 410	8 260	*8 820	6 190	*8 060	6 110	9.1 m
	15 ft lb	-	-	-	-	*31,220	*31,220	*25,510	25,040	*22,710	17,800	*19,440	13,650	*17,750	13,530	29.7 ft
	3 m kg	-	-	-	-	*18 730	16 860	*13 790	11 040	*11 460	7 980	8 720	6 070	8 230	5 730	9.3 m
	10 ft lb	-	-	-	-	*40,250	36,380	*29,830	23,830	24,860	17,210	18,770	13,070	18,180	12,650	30.6 ft
	1.5 m kg	-	-	-	-	*21 810	15 950	*15 580	10 560	11 250	7 710	8 580	5 940	8 100	5 610	9.4 m
	5 ft lb	-	-	-	-	*47,070	34,370	*33,720	22,780	24,230	16,640	18,480	12,800	17,860	12,380	30.7 ft
	0 m kg	-	-	-	-	*22 980	15 560	15 460	10 250	11 040	7 520	8 480	5 850	8 320	5 740	9.1 m
	0 ft lb	-	-	-	-	*49,790	33,500	33,250	22,100	23,780	16,230	18,690	12,900	18,350	12,660	29.9 ft
	-1.5 m kg	*10 640	*10 640	*15 150	*15 150	*22 740	15 490	15 320	10 120	10 950	7 440	-	-	8 980	6 170	8.6 m
	-5 ft lb	*23,470	*23,470	*34,280	*34,280	*49,330	33,330	32,940	21,830	23,600	16,060	-	-	19,840	13,640	28.3 ft
	-3 m kg	*17 630	*17 630	*23 890	*23 890	*21 310	15 630	15 370	10 170	11 010	7 500	-	-	10 400	7 110	7.8 m
-10 ft lb	*39,510	*39,510	*54,150	*54,150	*46,180	33,620	33,060	21,940	23,770	16,220	-	-	23,080	15,780	25.5 ft	
-4.5 m kg	-	-	*24 740	*24 740	*18 290	15 960	*13 720	10 420	-	-	-	-	*12 050	9 230	6.6 m	
-15 ft lb	-	-	*53,320	*53,320	*39,340	34,380	*29,220	22,520	-	-	-	-	*26,590	20,700	21.3 ft	
9 m kg	-	-	-	-	-	-	-	-	-	-	-	-	*6 930	*6 930	7.3 m	
30 ft lb	-	-	-	-	-	-	-	-	-	-	-	-	*15,430	*15,430	23.3 ft	
7.5 m kg	-	-	-	-	-	-	-	-	-	*8 240	*8 240	-	-	*6 480	*6 480	8.4 m
25 ft lb	-	-	-	-	-	-	-	-	-	*18,250	*18,250	-	-	*14,330	*14,330	27.4 ft
6 m kg	-	-	-	-	-	-	-	-	-	*8 610	*8 610	*7 710	6 350	*6 330	6 060	9.2 m
20 ft lb	-	-	-	-	-	-	-	-	-	*18,870	18,530	*14,690	13,610	*13,960	13,480	30.2 ft
4.5 m kg	-	-	-	-	-	-	-	*10 490	*10 490	*9 490	8 350	8 920	6 240	*6 380	5 470	9.7 m
15 ft lb	-	-	-	-	-	-	-	*22,750	*22,750	*20,690	17,990	19,180	13,420	*14,060	12,100	31.9 ft
3 m kg	-	-	-	-	*16 610	*16 610	*12 610	11 190	*10 640	8 030	8 740	6 080	*6 630	5 150	10.0 m	
10 ft lb	-	-	-	-	*35,710	*35,710	*27,280	24,140	*23,140	17,300	18,810	13,080	*14,570	11,370	32.7 ft	
1.5 m kg	-	-	-	-	*20 290	16 130	*14 630	10 610	11 260	7 710	8 550	5 900	*7 060	5 040	10.0 m	
5 ft lb	-	-	-	-	*43,770	34,770	*31,670	22,890	24,250	16,620	18,420	12,720	*15,550	11,110	32.8 ft	
0 m kg	-	-	*9 360	*9 360	*22 310	15 500	15 420	10 200	10 990	7 460	8 410	5 770	7 450	5 120	9.8 m	
0 ft lb	-	-	*21,280	*21,280	*48,290	33,380	33,180	22,000	23,660	16,090	18,120	12,440	16,430	11,300	32.1 ft	
-1.5 m kg	*9 550	*9 550	*14 260	*14 260	*22 790	15 280	15 190	9 990	10 830	7 320	8 340	5 700	7 940	5 440	9.3 m	
-5 ft lb	*21,320	*21,320	*32,220	*32,220	*49,410	32,870	32,660	21,540	23,330	15,790	17,990	12,320	17,540	12,020	30.6 ft	
-3 m kg	*14 870	*14 870	*20 600	*20 600	*22 020	15 310	15 150	9 960	10 820	7 300	-	-	8 960	6 120	8.6 m	
-10 ft lb	*33,290	*33,290	*46,610	*46,610	*47,720	32,940	32,590	21,480	23,320	15,770	-	-	19,870	13,570	28.0 ft	
-4.5 m kg	*21 230	*21 230	*27 870	*27 870	*19 860	15 560	*14 970	10 110	-	-	-	-	11 090	7 530	7.5 m	
-15 ft lb	*47,770	*47,770	*60,150	*60,150	*42,830	33,500	*32,180	21,830	-	-	-	-	24,800	16,830	24.3 ft	
-6 m kg	-	-	*21 090	*21 090	*15 340	*15 340	-	-	-	-	-	-	*11 490	11 210	5.7 m	
-20 ft lb	-	-	*44,720	*44,720	*32,370	*32,370	-	-	-	-	-	-	*25,300	*25,300	18.4 ft	

Notes: 1. Machine in "Fine Mode-F" (Power Boost) for lifting capacities. 2. The above loads are in compliance with SAE J1097 and ISO 10567 Hydraulic Excavator Lifting Capacity Standards.

3. Rated loads do not exceed 87% of hydraulic lifting capacity or 75% of tipping load. 4. Rated loads marked with an asterisk (\*) are limited by hydraulic capacity rather than tipping load.

# Specifications.

## LIFTING CAPACITY EC380ELC

Lifting capacity at the arm end without bucket.

For lifting capacity including bucket, simply subtract actual weight of the direct fit bucket or the bucket with quick coupler from the following values.

	Lifting hook related to ground level	1.5 m, 5 ft		3.0 m, 10 ft		4.5 m, 15 ft		6.0 m, 20 ft		7.5 m, 25 ft		9.0 m, 30 ft		Max. Reach			
		Along UC	Across UC	Along UC	Across UC	Along UC	Across UC	Along UC	Across UC	Along UC	Across UC	Along UC	Across UC	Along UC	Across UC	max.	
Boom: 6.45 m (21' 2") Arm: 2.6 m (8' 6") Shoe: 800 mm (32") CWT: 6 200 kg (13,670 lb)	7.5 m	-	-	-	-	-	-	*10 280	*10 280	-	-	-	-	*10 420	9 350	7.0 m	
	25 ft	-	-	-	-	-	-	*22,670	*22,670	-	-	-	-	*23,030	21,080	22.7 ft	
	6 m	-	-	-	-	-	-	-	*11 020	*11 020	*10 360	8 320	-	-	*10 360	7 530	8.0 m
	20 ft	-	-	-	-	-	-	-	*24,000	*24,000	*22,790	17,870	-	-	*22,840	16,780	25.9 ft
	4.5 m	-	-	-	-	*16 080	*16 080	*12 580	11 380	*10 970	8 110	-	-	-	10 230	6 610	8.5 m
	15 ft	-	-	-	-	*34,490	*34,490	*27,240	24,560	*23,930	17,480	-	-	-	22,650	14,640	27.9 ft
	3 m	-	-	-	-	-	-	*14 430	10 800	*11 870	7 830	-	-	-	9 570	6 150	8.8 m
	10 ft	-	-	-	-	-	-	*31,200	23,330	*25,810	16,900	-	-	-	21,140	13,580	28.9 ft
	1.5 m	-	-	-	-	-	-	*15 940	10 340	12 010	7 580	-	-	-	9 410	6 010	8.8 m
	5 ft	-	-	-	-	-	-	*34,500	22,320	25,870	16,360	-	-	-	20,470	13,260	29.0 ft
	0 m	-	-	-	-	-	-	*21 850	15 340	16 650	10 090	11 830	7 420	-	9 730	6 180	8.6 m
	0 ft	-	-	-	-	-	-	*49,270	33,000	35,800	21,760	25,490	16,020	-	21,450	13,630	28.2 ft
	-1.5 m	-	-	*14 880	*14 880	*21 890	15 380	*16 550	10 030	11 800	7 390	-	-	-	10 660	6 740	8.1 m
	-5 ft	-	-	*33,980	*33,980	*47,540	33,090	35,650	21,630	25,440	15,970	-	-	-	23,540	14,980	26.4 ft
	-3 m	-	-	*26 310	*26 310	*19 940	15 610	*15 270	10 160	-	-	-	-	-	*12 160	7 980	7.2 m
-10 ft	-	-	*57,220	*57,220	*43,210	33,580	*32,970	21,920	-	-	-	-	-	*26,830	17,730	23.5 ft	
-4.5 m	-	-	*20 930	*20 930	*16 070	*16 070	-	-	-	-	-	-	-	*12 110	11 090	5.8 m	
-15 ft	-	-	*45,000	*45,000	*34,370	*34,370	-	-	-	-	-	-	-	*26,620	25,020	18.8 ft	
Boom: 6.45 m (21' 2") Arm: 3.2 m (10' 6") Shoe: 800 mm (32") CWT: 6 200 kg (13,670 lb)	7.5 m	-	-	-	-	-	-	-	-	*9 370	8 530	-	-	*8 200	*8 200	7.7 m	
	25 ft	-	-	-	-	-	-	-	-	*20,660	18,800	-	-	*18,150	*18,150	24.9 ft	
	6 m	-	-	-	-	-	-	-	-	*9 500	8 460	-	-	*7 980	6 800	8.5 m	
	20 ft	-	-	-	-	-	-	-	-	*20,840	18,200	-	-	*17,600	15,130	27.8 ft	
	4.5 m	-	-	-	-	*14 350	*14 350	*11 610	11 580	*10 260	8 220	*8 790	6 120	*8 060	6 040	9.1 m	
	15 ft	-	-	-	-	*30,820	*30,820	*25,170	24,990	*22,370	17,700	*19,380	13,490	*17,750	13,380	29.7 ft	
	3 m	-	-	-	-	*18 440	16 750	*13 580	10 970	*11 290	7 910	9 310	5 990	*8 390	5 650	9.3 m	
	10 ft	-	-	-	-	*39,640	36,160	*29,380	23,670	*24,530	17,050	20,040	12,900	*18,470	12,480	30.6 ft	
	1.5 m	-	-	-	-	*21 460	15 750	*15 330	10 430	12 060	7 610	9 160	5 850	8 640	5 520	9.4 m	
	5 ft	-	-	-	-	*46,320	33,950	*33,180	22,520	25,960	16,430	19,720	12,610	19,050	12,180	30.7 ft	
	0 m	-	-	-	-	*22 610	15 330	*16 410	10 100	11 820	7 410	9 050	5 750	8 870	5 640	9.1 m	
	0 ft	-	-	-	-	*48,990	32,990	*35,560	21,780	25,460	15,980	-	-	19,560	12,450	29.9 ft	
	-1.5 m	-	-	*15 110	*15 110	*22 370	15 250	*16 510	9 960	11 720	7 320	-	-	-	9 580	6 070	8.6 m
	-5 ft	-	-	*34,210	*34,210	*48,540	32,810	35,500	21,480	25,250	15,790	-	-	-	21,170	13,410	28.3 ft
	-3 m	-	*17 590	*17 590	*23 840	*23 840	*20 970	15 400	*15 880	10 010	11 800	7 380	-	-	11 120	7 000	7.8 m
-10 ft	-	*39,430	*39,430	*54,050	*54,050	*45,430	33,130	*34,340	21,600	25,450	15,970	-	-	24,680	15,530	25.6 ft	
-4.5 m	-	-	*24 300	*24 300	*17 980	15 770	*13 490	10 290	-	-	-	-	-	*11 830	9 100	6.6 m	
-15 ft	-	-	*52,380	*52,380	*38,670	33,970	*28,730	22,240	-	-	-	-	-	*26,100	20,420	21.3 ft	
Boom: 6.45 m (21' 2") Arm: 3.9 m (12' 10") Shoe: 800 mm (32") CWT: 6 200 kg (13,670 lb)	7.5 m	-	-	-	-	-	-	-	-	*8 160	*8 160	-	-	*6 470	*6 470	8.4 m	
	25 ft	-	-	-	-	-	-	-	-	*18,070	*18,070	-	-	*14,300	*14,300	27.4 ft	
	6 m	-	-	-	-	-	-	-	-	*8 510	*8 510	*7 680	6 320	*6 310	6 030	9.2 m	
	20 ft	-	-	-	-	-	-	-	-	*18,670	18,530	*14,610	13,540	*13,930	13,410	30.2 ft	
	4.5 m	-	-	-	-	-	-	*10 380	*10 380	*9 380	8 340	*8 850	6 210	*6 370	5 420	9.7 m	
	15 ft	-	-	-	-	-	-	*22,510	*22,510	*20,450	17,960	*19,410	13,340	*14,030	12,010	31.9 ft	
	3 m	-	-	-	-	*16 410	*16 410	*12 460	11 170	*10 510	7 990	9 370	6 030	*6 600	5 100	10.0 m	
	10 ft	-	-	-	-	*35,300	35,300	*26,960	24,090	*22,850	17,230	20,150	12,980	*14,530	11,250	32.7 ft	
	1.5 m	-	-	-	-	*20 040	16 040	*14 440	10 550	*11 650	7 650	9 160	5 850	*7 040	4 980	10.0 m	
	5 ft	-	-	-	-	*43,230	34,580	*31,270	22,760	*25,310	16,500	19,730	12,600	*15,500	10,980	32.8 ft	
	0 m	-	-	*9 320	*9 320	*22 030	15 360	*15 870	10 110	11 810	7 390	9 000	5 700	*7 760	5 060	9.8 m	
	0 ft	-	-	*21,210	*21,210	*47,680	33,080	*34,390	21,800	25,430	15,930	19,400	12,290	*17,100	11,150	32.1 ft	
	-1.5 m	-	*9 510	*9 510	*14 220	*14 220	*22 500	15 120	16 440	9 880	11 640	7 230	8 930	5 630	8 500	5 370	9.3 m
	-5 ft	-	*21,230	*21,230	*32,130	*32,130	*48,790	32,530	35,330	21,310	25,070	15,600	19,250	12,160	18,760	11,860	30.6 ft
	-3 m	-	*14 830	*14 830	*20 550	*20 550	*21 740	15 150	*16 250	9 850	11 620	7 220	-	-	9 600	6 050	8.6 m
-10 ft	-	*33,200	*33,200	*46,500	*46,500	*47,110	32,600	*35,180	21,240	25,050	15,580	-	-	21,270	13,400	28.1 ft	
-4.5 m	-	*21 190	*21 190	*27 500	*27 500	*19 600	15 420	*14 770	10 010	-	-	-	-	*11 110	7 450	7.5 m	
-15 ft	-	*47,670	*47,670	*59,360	*59,360	*42,270	33,190	*31,750	21,600	-	-	-	-	*24,540	16,640	24.3 ft	
-6 m	-	-	-	*20 790	*20 790	*15 130	*15 130	-	-	-	-	-	-	*11 300	11 100	5.8 m	
-20 ft	-	-	-	*44,070	*44,070	*31,910	*31,910	-	-	-	-	-	-	*24,880	*24,880	18.4 ft	
Boom: 6.2 m (20' 4") Arm: 2.6 m (8' 6") Shoe: 800 mm (32") CWT: 6 700 kg (14,770 lb)	7.5 m	-	-	-	-	-	-	*10 700	*10 700	-	-	-	-	*10 870	10 370	6.7 m	
	25 ft	-	-	-	-	-	-	*23,660	*23,660	-	-	-	-	*24,030	23,440	21.6 ft	
	6 m	-	-	-	-	-	-	-	*11 220	*11 220	*10 740	8 560	-	-	*10 760	8 230	7.7 m
	20 ft	-	-	-	-	-	-	-	*24,490	*24,490	*23,730	18,380	-	-	*23,740	18,350	25.0 ft
	4.5 m	-	-	-	-	*15 850	*15 850	*12 670	11 820	*11 200	8 400	-	-	*10 870	7 180	8.3 m	
	15 ft	-	-	-	-	*34,060	*34,060	*27,470	25,490	*24,460	18,090	-	-	*23,960	15,910	27.1 ft	
	3 m	-	-	-	-	*19 770	17 110	*14 470	11 260	*12 030	8 140	-	-	-	10 310	6 670	8.6 m
	10 ft	-	-	-	-	*42,490	36,940	*31,310	24,310	*26,180	17,560	-	-	-	22,780	14,730	28.1 ft
	1.5 m	-	-	-	-	*22 280	16 290	*15 980	10 800	12 420	7 900	-	-	-	10 150	6 530	8.6 m
	5 ft	-	-	-	-	*48,130	35,110	*34,620	23,310	26,740	17,050	-	-	-	22,370	14,390	28.2 ft
	0 m	-	-	-	-	*22 820	16 020	*16 750	10 540	12 250	7 750	-	-	-	10 510	6 730	8.3 m
	0 ft	-	-	-	-	*49,480	34,470	*36,320	22,730	26,380	16,730	-	-	-	23,180	14,830	27.3 ft
	-1.5 m	-	-	*17 770	*17 770	*22 010	16 040	*16 560	10 480	12 230	7 740	-	-	-	11 600	7 370	7.8 m
	-5 ft	-	-	*40,440	*40,440	*47,770	34,500	*35,890	22,600	26,380	16,720	-	-	-	25,630	16,300	25.5 ft
	-3 m	-	-	*26 490	*26 490	*19 850	16 270	*15 050	10 620	-	-	-	-	-	*12 530	8 860	6.9 m
-10 ft	-	-	*57,540	*57,540	*42,980	35,020	*32,410	22,930	-	-	-	-	-	*27,640	19,690	22.4 ft	
-4.5 m	-	-	-	-	*15 320	*15 320	-	-	-	-	-	-	-	*12 280	*12 280	5.4 m	
-15 ft	-	-	-	-	*32,540	*32,540	-	-	-	-	-	-	-	*26,950	*26,950	17.5 ft	
Boom: 6.45 m (21' 2") Arm: 2.6 m (8' 6") Shoe: 800 mm (32") CWT: 6 700 kg (14,770 lb)	7.5 m	-	-	-	-	-	-	*22,670	*22,670	-	-	-	-	*10 420	9 660	7.0 m	
	25 ft	-	-	-	-	-	-	*22,670	*22,670	-	-	-	-	*23,030	21,790	22.7 ft	
	6 m	-	-	-	-	-	-	-	*11 020	*11 020	*10 360	8 600	-	-	*10 360	7 800	8.0 m
	20 ft	-	-	-	-	-	-	-	*24,000	*24,000	*22,790	18,500	-	-	*22,840	17,370	25.9 ft
	4.5 m	-	-	-	-	*16 080	*16 080	*12 580	11 770	*10 970	8 400	-	-	-	10 480	6 850	8.5 m
	15 ft	-	-	-	-	*34,490	*34,490										

## LIFTING CAPACITY EC380ELC

Lifting capacity at the arm end without bucket.

For lifting capacity including bucket, simply subtract actual weight of the direct fit bucket or the bucket with quick coupler from the following values.

	Lifting hook related to ground level	1.5 m, 5 ft		3.0 m, 10 ft		4.5 m, 15 ft		6.0 m, 20 ft		7.5 m, 25 ft		9.0 m, 30 ft		Max. Reach		max.	
		Along UC	Across UC	Along UC	Across UC	Along UC	Across UC	Along UC	Across UC	Along UC	Across UC	Along UC	Across UC	Along UC	Across UC		
Boom: 6.45 m (21' 2")	7.5 m kg	-	-	-	-	-	-	-	-	9 370	8 820	-	-	8 200	8 200	7.7 m	
	25 ft lb	-	-	-	-	-	-	-	-	20,660	19,440	-	-	18,150	18,150	24.9 ft	
	6 m kg	-	-	-	-	-	-	-	-	9 500	8 750	-	-	7 980	7 040	8.5 m	
	20 ft lb	-	-	-	-	-	-	-	-	20,840	18,820	-	-	17,600	15,680	27.8 ft	
	4.5 m kg	-	-	-	-	14 350	14 350	11 610	11 610	10 260	8 500	8 790	6 350	8 060	6 270	9.1 m	
	15 ft lb	-	-	-	-	30,820	30,820	25,170	25,170	22,370	18,330	19,380	14,000	17,750	13,890	29.7 ft	
	3 m kg	-	-	-	-	18 440	17 330	13 580	11 350	11 290	8 190	9 600	6 220	8 390	5 870	9.3 m	
	10 ft lb	-	-	-	-	39,640	37,400	29,380	24,500	24,530	17,670	20,660	13,400	18,470	12,970	30.6 ft	
	3.2 m (10' 6")	1.5 m kg	-	-	-	21 460	16 330	15 330	10 820	12 280	7 900	9 450	6 080	8 910	5 740	9.4 m	
	5 ft lb	-	-	-	-	46,320	35,190	33,180	23,350	26,660	17,050	20,340	13,110	19,650	12,670	30.7 ft	
	800 mm (32")	0 ft lb	-	-	-	22 610	15 900	16 410	10 480	12 190	7 690	9 340	5 980	9 150	5 870	9.1 m	
	0 ft lb	-	-	-	-	48,990	34,230	35,560	22,610	26,260	16,600	-	-	20,190	12,950	29.9 ft	
	CWT:	-1.5 m kg	-	-	15 110	15 110	22 370	15 830	16 640	10 350	12 090	7 610	-	9 890	6 310	8.6 m	
	-5 ft lb	-	-	34,210	34,210	48,540	34,050	36,080	22,310	26,050	16,420	-	-	21,850	13,940	28.3 ft	
	6 700 kg (14,770 lb)	-3 m kg	17 590	17 590	23 840	23 840	20 970	15 970	15 880	10 400	12 170	7 670	-	11 470	7 270	7.8 m	
-10 ft lb	39,430	39,430	54,050	54,050	45,430	34,370	34,340	22,430	26,240	16,590	-	-	25,430	16,140	25.6 ft		
-4.5 m kg	-	-	24 300	24 300	17 980	16 340	13 490	10 670	-	-	-	-	11 830	9 440	6.6 m		
-15 ft lb	-	-	52,380	52,380	38,670	35,200	28,730	23,070	-	-	-	-	26,100	21,180	21.3 ft		
Boom: 6.45 m (21' 2")	9 m kg	-	-	-	-	-	-	-	-	-	-	-	-	6 920	6 920	7.2 m	
	30 ft lb	-	-	-	-	-	-	-	-	-	-	-	-	15,410	15,410	23.3 ft	
	7.5 m kg	-	-	-	-	-	-	-	-	8 160	8 160	-	-	6 470	6 470	8.4 m	
	25 ft lb	-	-	-	-	-	-	-	-	18,070	18,070	-	-	14,300	14,300	27.4 ft	
	6 m kg	-	-	-	-	-	-	-	-	8 510	8 510	7 680	6 550	6 310	6 260	9.2 m	
	20 ft lb	-	-	-	-	-	-	-	-	18,670	18,670	14,610	14,040	13,930	13,910	30.2 ft	
	4.5 m kg	-	-	-	-	-	-	10 380	10 380	9 380	8 630	8 850	6 440	6 370	5 630	9.7 m	
	15 ft lb	-	-	-	-	-	-	22,510	22,510	20,450	18,590	19,410	13,850	14,030	12,480	31.9 ft	
	3 m kg	-	-	-	-	16 410	16 410	12 460	11 550	10 510	8 280	9 430	6 260	6 600	5 300	10.0 m	
	3.9 m (12' 10")	10 ft lb	-	-	-	35,300	35,300	26,960	24,920	22,850	17,850	20,600	13,480	14,530	11,710	32.7 ft	
	1.5 m kg	-	-	-	-	20 040	16 620	14 440	10 930	11 650	7 940	9 450	6 080	7 040	5 180	10.0 m	
	5 ft lb	-	-	-	-	43,230	35,810	31,270	23,590	25,310	17,130	20,350	13,100	15,500	11,430	32.8 ft	
	800 mm (32")	0 ft lb	-	-	9 320	9 320	22 030	15 940	15 870	10 500	12 180	7 680	9 290	5 930	7 760	5 270	9.8 m
	0 ft lb	-	-	21,210	21,210	47,680	34,310	34,390	22,630	26,230	16,550	20,020	12,790	17,100	11,610	32.1 ft	
	CWT:	-1.5 m kg	9 510	9 510	14 220	14 220	22 500	15 700	16 510	10 270	12 010	7 520	9 220	5 860	8 770	5 590	9.3 m
-5 ft lb	21,230	21,230	32,130	32,130	48,790	33,770	35,800	22,140	25,870	16,230	19,880	12,660	19,370	12,350	30.6 ft		
6 700 kg (14,770 lb)	-3 m kg	14 830	14 830	20 550	20 550	21 740	15 730	16 250	10 230	11 990	7 510	-	9 900	6 290	8.6 m		
-10 ft lb	33,200	33,200	46,500	46,500	47,110	33,840	35,180	22,070	25,840	16,210	-	-	21,950	13,940	28.1 ft		
-4.5 m kg	21 190	21 190	27 500	27 500	19 600	15 990	14 770	10 390	-	-	-	-	11 110	7 740	7.5 m		
-15 ft lb	47,670	47,670	59,360	59,360	42,270	34,430	31,750	22,440	-	-	-	-	24,540	17,290	24.3 ft		
-6 m kg	-	-	20 790	20 790	15 130	15 130	-	-	-	-	-	-	11 300	11 300	5.8 m		
-20 ft lb	-	-	44,070	44,070	31,910	31,910	-	-	-	-	-	-	24,880	24,880	18.4 ft		
Boom: 6.2 m (20' 4")	7.5 m kg	-	-	-	-	-	-	10 700	10 700	-	-	-	-	10 870	10 670	6.7 m	
	25 ft lb	-	-	-	-	-	-	23,660	23,660	-	-	-	-	24,030	24,030	21.6 ft	
	6 m kg	-	-	-	-	-	-	11 220	11 220	10 740	8 830	-	-	10 760	8 480	7.7 m	
	20 ft lb	-	-	-	-	-	-	24,490	24,490	23,730	18,950	-	-	23,740	18,920	25.0 ft	
	4.5 m kg	-	-	-	-	15 850	15 850	12 670	12 170	11 200	8 660	-	-	10 870	7 410	8.3 m	
	15 ft lb	-	-	-	-	34,060	34,060	27,470	26,250	24,460	18,660	-	-	23,960	16,430	27.1 ft	
	3 m kg	-	-	-	-	19 770	17 640	14 470	11 610	12 030	8 410	-	-	10 600	6 890	8.6 m	
	2.6 m (8' 6")	10 ft lb	-	-	-	42,490	38,070	31,310	25,060	26,180	18,130	-	-	23,410	15,230	28.1 ft	
	1.5 m kg	-	-	-	-	22 280	16 810	15 980	11 150	12 760	8 170	-	-	10 430	6 750	8.6 m	
	Shoe:	5 ft lb	-	-	-	48,130	36,240	34,620	24,060	27,490	17,620	-	-	23,000	14,880	28.2 ft	
	800 mm (32")	0 ft lb	-	-	-	22 820	16 540	16 750	10 890	12 590	8 010	-	-	10 810	6 960	8.3 m	
	0 ft lb	-	-	-	-	49,480	35,600	36,320	23,490	27,130	17,300	-	-	23,840	15,340	27.3 ft	
	CWT:	-1.5 m kg	-	-	17 770	17 770	22 010	16 560	16 560	10 830	12 580	8 000	-	11 930	7 630	7.8 m	
	-5 ft lb	-	-	40,440	40,440	47,770	35,630	35,890	23,350	27,120	17,290	-	-	26,350	16,850	25.5 ft	
	7 250 kg (15,980 lb)	-3 m kg	-	-	26 490	26 490	19 850	16 800	15 050	10 970	-	-	-	12 530	9 150	6.9 m	
-10 ft lb	-	-	57,540	57,540	42,980	36,150	32,410	23,690	-	-	-	-	27,640	20,340	22.4 ft		
-4.5 m kg	-	-	-	-	15 320	15 320	-	-	-	-	-	-	12 280	12 280	5.4 m		
-15 ft lb	-	-	-	-	32,540	32,540	-	-	-	-	-	-	26,950	26,950	17.5 ft		
Boom: 6.45 m (21' 2")	7.5 m kg	-	-	-	-	-	-	-	-	9 370	9 080	-	-	8 200	8 200	7.7 m	
	25 ft lb	-	-	-	-	-	-	-	-	20,660	20,020	-	-	18,150	18,150	24.9 ft	
	6 m kg	-	-	-	-	-	-	-	-	9 500	9 010	-	-	7 980	7 270	8.5 m	
	20 ft lb	-	-	-	-	-	-	-	-	20,840	19,390	-	-	17,600	16,180	27.8 ft	
	4.5 m kg	-	-	-	-	14 350	14 350	11 610	11 610	10 260	8 770	8 790	6 560	8 060	6 480	9.1 m	
	15 ft lb	-	-	-	-	30,820	30,820	25,170	25,170	22,370	18,900	19,380	14,460	17,750	14,350	29.7 ft	
	3 m kg	-	-	-	-	18 440	17 850	13 580	11 700	11 290	8 460	9 870	6 430	8 390	6 070	9.3 m	
	3.2 m (10' 6")	10 ft lb	-	-	-	39,640	38,530	29,380	25,260	24,530	18,240	21,240	13,850	18,470	13,410	30.6 ft	
	1.5 m kg	-	-	-	-	21 460	16 850	15 330	11 170	12 280	8 170	9 710	6 290	9 030	5 950	9.4 m	
	Shoe:	5 ft lb	-	-	-	46,320	36,320	33,180	24,100	26,660	17,620	20,930	13,560	19,860	13,110	30.7 ft	
	800 mm (32")	0 ft lb	-	-	-	22 610	16 430	16 410	10 830	12 540	7 960	9 610	6 190	9 420	6 080	9.1 m	
	0 ft lb	-	-	-	-	48,990	35,360	35,560	23,360	27,000	17,170	-	-	20,770	13,400	29.9 ft	
	CWT:	-1.5 m kg	-	-	15 110	15 110	22 370	16 350	16 640	10 700	12 440	7 870	-	10 170	6 530	8.6 m	
	-5 ft lb	-	-	34,210	34,210	48,540	35,180	36,080	23,070	26,790	16,990	-	-	22,470	14,430	28.3 ft	
	7 250 kg (15,980 lb)	-3 m kg	17 590	17 590	23 840	23 840	20 970	16 500	15 880	10 750	12 270	7 930	-	11 520	7 520	7.8 m	
-10 ft lb	39,430	39,430	54,050	54,050	45,430	35,500	34,340	23,190	26,330	17,160	-	-	25,430	16,690	25.6 ft		
-4.5 m kg	-	-	24 300	24 300	17 980	16 870	13 490	11 020	-	-	-	-	11 830	9 750	6.6 m		
-15 ft lb	-	-	52,380	52,380	38,670	36,330	28,730	23,830	-	-	-	-	26,100	21,880	21.3 ft		

Notes: 1. Machine in "Fine Mode-F" (Power Boost) for lifting capacities. 2. The above loads are in compliance with SAE J1097 and ISO 10567 Hydraulic Excavator Lifting Capacity Standards. 3. Rated loads do not exceed 87% of hydraulic lifting capacity or 75% of tipping load. 4. Rated loads marked with an asterisk (\*) are limited by hydraulic capacity rather than tipping load.

# Specifications.

## LIFTING CAPACITY EC380ELC

Lifting capacity at the arm end without bucket.

For lifting capacity including bucket, simply subtract actual weight of the direct fit bucket or the bucket with quick coupler from the following values.

	Lifting hook related to ground level	1.5 m, 5 ft		3.0 m, 10 ft		4.5 m, 15 ft		6.0 m, 20 ft		7.5 m, 25 ft		9.0 m, 30 ft		Max. Reach		max.	
		Along UC	Across UC	Along UC	Across UC	Along UC	Across UC	Along UC	Across UC	Along UC	Across UC	Along UC	Across UC	Along UC	Across UC		
Boom: 6.45 m (21' 2") Arm: 3.9 m (12' 10") Shoe: 1.5 m 800 mm (32") CWT: 7 250 kg (15,980 lb)	9 m kg	-	-	-	-	-	-	-	-	-	-	-	-	6 920	6 920	7.2 m	
	30 ft lb	-	-	-	-	-	-	-	-	-	-	-	-	15 410	15 410	23.3 ft	
	7.5 m kg	-	-	-	-	-	-	-	-	8 160	8 160	-	-	6 470	6 470	8.4 m	
	25 ft lb	-	-	-	-	-	-	-	-	18 070	18 070	-	-	14 300	14 300	27.4 ft	
	6 m kg	-	-	-	-	-	-	-	-	8 510	8 510	7 680	6 760	6 310	6 310	9.2 m	
	20 ft lb	-	-	-	-	-	-	-	-	18 670	18 670	16 610	14 500	13 930	13 930	30.2 ft	
	4.5 m kg	-	-	-	-	-	-	-	10 380	10 380	9 380	8 890	8 850	6 850	6 370	5 830	9.7 m
	15 ft lb	-	-	-	-	-	-	-	22 510	22 510	20 450	19 160	19 410	14 300	14 030	12 900	31.9 ft
	3 m kg	-	-	-	-	16 410	16 410	12 460	11 900	10 510	8 540	9 430	6 470	6 600	5 490	5 490	10.0 m
	10 ft lb	-	-	-	-	35 300	35 300	26 960	25 680	22 850	18 420	20 600	13 940	14 530	12 120	12 120	32.7 ft
	1.5 m kg	-	-	-	-	20 040	17 140	14 440	11 290	11 650	8 200	9 720	6 290	7 040	5 370	5 370	10.0 m
	5 ft lb	-	-	-	-	43 230	36 940	31 270	24 350	25 310	17 700	20 940	13 550	15 500	11 840	11 840	32.8 ft
	0 m kg	-	-	9 320	9 320	22 030	16 460	15 870	10 850	12 530	7 940	9 560	6 140	7 760	5 460	5 460	9.8 m
	0 ft lb	-	-	21 210	21 210	47 680	35 440	34 390	23 390	26 970	17 120	20 600	13 250	17 100	12 040	12 040	32.1 ft
	-1.5 m kg	9 510	9 510	14 220	14 220	22 500	16 220	16 510	10 620	12 360	7 790	9 490	6 070	8 930	5 800	5 800	9.3 m
-5 ft lb	21 230	21 230	32 130	32 130	48 790	34 900	35 800	22 890	26 610	16 800	20 460	13 120	19 720	12 800	12 800	30.6 ft	
-3 m kg	14 830	14 830	20 550	20 550	21 740	16 250	16 250	10 580	12 340	7 770	-	-	10 190	6 510	6 510	8.6 m	
-10 ft lb	33 200	33 200	46 500	46 500	47 110	34 970	35 180	22 820	26 590	16 780	-	-	22 590	14 440	14 440	28.1 ft	
-4.5 m kg	21 190	21 190	27 500	27 500	19 600	16 510	14 770	10 740	-	-	-	-	11 110	8 000	7 500	7.5 m	
-15 ft lb	47 670	47 670	59 360	59 360	42 270	35 560	31 750	23 190	-	-	-	-	24 540	17 880	17 880	24.3 ft	
-6 m kg	-	-	20 790	20 790	15 130	15 130	-	-	-	-	-	-	11 300	11 300	5.8 m	5.8 m	
-20 ft lb	-	-	44 070	44 070	31 910	31 910	-	-	-	-	-	-	24 880	24 880	18.4 ft	18.4 ft	
7.5 m kg	-	-	-	-	-	-	-	-	10 700	10 700	-	-	-	10 870	10 460	6.7 m	
25 ft lb	-	-	-	-	-	-	-	-	23 660	23 660	-	-	-	24 030	23 650	21.6 ft	
6 m kg	-	-	-	-	-	-	-	-	11 220	11 220	10 740	8 640	-	10 760	8 310	7.7 m	
20 ft lb	-	-	-	-	-	-	-	-	24 490	24 490	23 730	18 550	-	23 740	18 530	25.0 ft	
4.5 m kg	-	-	-	-	15 850	15 850	12 670	11 930	11 200	8 480	-	-	-	10 870	7 250	8.3 m	
15 ft lb	-	-	-	-	34 060	34 060	27 470	25 730	24 460	18 270	-	-	-	23 960	16 070	27.1 ft	
3 m kg	-	-	-	-	19 770	17 270	14 470	11 370	12 030	8 220	-	-	-	10 420	6 740	8.6 m	
10 ft lb	-	-	-	-	42 490	37 290	31 310	24 540	26 180	17 730	-	-	-	23 020	14 880	28.1 ft	
1.5 m kg	-	-	-	-	22 280	16 450	15 980	10 910	12 550	7 980	-	-	-	10 250	6 590	8.6 m	
5 ft lb	-	-	-	-	48 130	35 450	34 620	23 540	27 020	17 230	-	-	-	22 610	14 540	28.2 ft	
0 m kg	-	-	-	-	22 820	16 180	16 750	10 650	12 380	7 830	-	-	-	10 620	6 800	8.3 m	
0 ft lb	-	-	-	-	49 480	34 820	36 320	22 960	26 660	16 900	-	-	-	23 430	14 990	27.3 ft	
-1.5 m kg	-	-	17 770	17 770	22 010	16 200	16 560	10 580	12 360	7 820	-	-	-	11 720	7 450	7.8 m	
-5 ft lb	-	-	40 440	40 440	47 770	34 850	35 890	22 830	26 660	16 900	-	-	-	25 900	16 470	25.5 ft	
-3 m kg	-	-	26 490	26 490	19 850	16 430	15 050	10 730	-	-	-	-	-	12 530	8 950	6.9 m	
-10 ft lb	-	-	57 540	57 540	42 980	35 370	32 410	23 170	-	-	-	-	-	27 640	19 890	22.4 ft	
-4.5 m kg	-	-	-	-	15 320	15 320	-	-	-	-	-	-	-	12 280	12 280	5.4 m	
-15 ft lb	-	-	-	-	32 540	32 540	-	-	-	-	-	-	-	26 950	26 950	17.5 ft	
7.5 m kg	-	-	-	-	-	-	-	-	22 670	22 670	-	-	-	10 420	9 750	7.0 m	
25 ft lb	-	-	-	-	-	-	-	-	50 020	50 020	-	-	-	23 030	21 960	22.7 ft	
6 m kg	-	-	-	-	-	-	-	-	11 020	11 020	10 360	8 690	-	10 360	7 870	8.0 m	
20 ft lb	-	-	-	-	-	-	-	-	24 000	24 000	22 790	18 670	-	22 840	17 440	25.9 ft	
4.5 m kg	-	-	-	-	16 080	16 080	12 580	11 870	10 970	8 480	-	-	-	10 480	6 920	8.5 m	
15 ft lb	-	-	-	-	34 490	34 490	27 240	25 630	23 930	18 280	-	-	-	23 100	15 340	27.9 ft	
3 m kg	-	-	-	-	-	-	14 430	11 300	11 870	8 200	-	-	-	9 970	6 450	8.8 m	
10 ft lb	-	-	-	-	-	-	31 200	24 390	25 810	17 700	-	-	-	22 020	14 250	28.9 ft	
1.5 m kg	-	-	-	-	-	-	15 940	10 830	12 510	7 950	-	-	-	9 820	6 320	8.8 m	
5 ft lb	-	-	-	-	-	-	34 500	23 380	26 950	17 160	-	-	-	21 640	13 990	29.0 ft	
0 m kg	-	-	-	-	21 850	16 070	16 690	10 580	12 330	7 790	-	-	-	10 140	6 500	8.6 m	
0 ft lb	-	-	-	-	49 270	34 590	36 180	22 820	26 570	16 820	-	-	-	22 360	14 320	28.2 ft	
-1.5 m kg	-	-	14 880	14 880	21 890	16 120	16 550	10 520	12 300	7 760	-	-	-	11 110	7 080	8.1 m	
-5 ft lb	-	-	33 980	33 980	47 540	34 670	35 870	22 690	26 510	16 770	-	-	-	24 540	15 630	26.4 ft	
-3 m kg	-	-	26 310	26 310	19 940	16 340	15 270	10 650	-	-	-	-	-	12 160	8 370	7.2 m	
-10 ft lb	-	-	57 220	57 220	43 210	35 170	32 970	22 990	-	-	-	-	-	26 830	18 600	23.5 ft	
-4.5 m kg	-	-	20 930	20 930	16 070	16 070	-	-	-	-	-	-	-	12 110	11 600	5.8 m	
-15 ft lb	-	-	45 000	45 000	34 370	34 370	-	-	-	-	-	-	-	26 620	26 180	18.8 ft	
7.5 m kg	-	-	-	-	-	-	-	-	-	-	9 370	8 900	-	8 200	8 200	7.7 m	
25 ft lb	-	-	-	-	-	-	-	-	-	-	20 660	19 620	-	18 150	18 150	24.9 ft	
6 m kg	-	-	-	-	-	-	-	-	-	-	9 500	8 830	-	7 980	7 110	8.5 m	
20 ft lb	-	-	-	-	-	-	-	-	-	-	20 840	19 000	-	17 600	15 840	27.8 ft	
4.5 m kg	-	-	-	-	14 350	14 350	11 610	11 610	10 260	8 590	8 790	6 420	8 060	6 330	9.1 m		
15 ft lb	-	-	-	-	30 820	30 820	25 170	25 170	22 370	18 500	19 380	14 150	17 750	14 030	29.7 ft		
3 m kg	-	-	-	-	18 440	17 490	13 580	11 460	11 290	8 280	9 700	6 290	8 390	5 930	9.3 m		
10 ft lb	-	-	-	-	39 640	37 740	29 380	24 740	24 530	17 850	20 880	13 540	18 470	13 110	30.6 ft		
1.5 m kg	-	-	-	-	21 460	16 490	15 330	10 930	12 280	7 980	9 550	6 150	9 010	5 810	9.4 m		
5 ft lb	-	-	-	-	46 320	35 540	33 180	23 580	26 660	17 230	20 560	13 250	19 860	12 800	30.7 ft		
0 m kg	-	-	-	-	22 610	16 060	16 410	10 590	12 320	7 780	9 440	6 050	9 250	5 930	9.1 m		
0 ft lb	-	-	-	-	48 990	34 580	35 560	22 840	26 540	16 780	-	-	-	20 410	13 090	29.9 ft	
-1.5 m kg	-	-	15 110	15 110	22 370	15 990	16 640	10 450	12 220	7 690	-	-	-	10 000	6 380	8.6 m	
-5 ft lb	-	-	34 210	34 210	48 540	34 400	36 080	22 540	26 330	16 590	-	-	-	22 080	14 100	28.3 ft	
-3 m kg	17 590	17 590	23 840	23 840	20 970	16 130	15 880	10 500	12 270	7 750	-	-	-	11 520	7 350	7.8 m	
-10 ft lb	39 430	39 430	54 050	54 050	45 430	34 720	34 340	22 660	26 330	16 770	-	-	-	25 430	16 310	25.6 ft	
-4.5 m kg	-	-	24 300	24 300	17 980	16 510	13 490	10 780	-	-	-	-	-	11 380	9 540	8.6 m	
-15 ft lb	-	-	52 380	52 380	38 670	35 550	28 730	23 300	-	-	-	-	-	26 100	21 400	27.3 ft	
9 m kg	-	-	-	-	-	-	-	-	-	-	-	-	-	6 920	6 920	7.2 m	
30 ft lb	-	-	-	-	-	-	-	-	-	-	-	-	-	15 410	15 410	23.3 ft	
7.5 m kg	-	-	-	-	-	-	-	-	8 160	8 160	-	-	-	6 470	6 470	8.4 m	
25 ft lb	-	-	-	-	-	-	-	-	18 070	18 070	-	-	-	14 300	14 300	27.4 ft	
6 m kg	-	-	-	-	-	-	-	-	8 510	8 510	7 680	6 610	-	6 310	6 310	9.2	

## LIFTING CAPACITY EC380ELC

Lifting capacity at the arm end without bucket.

For lifting capacity including bucket, simply subtract actual weight of the direct fit bucket or the bucket with quick coupler from the following values.

	Lifting hook related to ground level	1.5 m, 5 ft		3.0 m, 10 ft		4.5 m, 15 ft		6.0 m, 20 ft		7.5 m, 25 ft		9.0 m, 30 ft		Max. Reach		max.	
		Along UC	Across UC	Along UC	Across UC	Along UC	Across UC	Along UC	Across UC	Along UC	Across UC	Along UC	Across UC	Along UC	Across UC		
Boom: 6.2 m (20' 4") Arm: 2.6 m (8' 6") Shoe: 900 mm (36") CWT: 7 250 kg (15,980 lb)	7.5 m kg	-	-	-	-	-	-	*10 700	*10 700	-	-	-	-	*10 870	*10 770	6.7 m	
	25 ft lb	-	-	-	-	-	-	*23,660	*23,660	-	-	-	-	*24,030	*24,030	21.6 ft	
	6 m kg	-	-	-	-	-	-	-	*11 220	*11 220	*10 740	8 910	-	-	*10 760	8 560	7.7 m
	20 ft lb	-	-	-	-	-	-	-	*24,490	*24,490	*23,730	19,120	-	-	*23,740	19,100	25.0 ft
	4.5 m kg	-	-	-	-	*15 850	*15 850	*12 670	12 280	*11 200	8 740	-	-	*10 870	7 480	8.3 m	
	15 ft lb	-	-	-	-	*34,060	*34,060	*27,470	26,480	*24,460	18,840	-	-	*23,960	16,590	27.1 ft	
	3 m kg	-	-	-	-	*19 770	17 800	*14 470	11 720	*12 030	8 490	-	-	*10 710	6 960	8.6 m	
	10 ft lb	-	-	-	-	*42,490	38,420	*31,310	25,300	*26,180	18,300	-	-	*23,650	15,380	28.1 ft	
	1.5 m kg	-	-	-	-	*22 280	16 970	*15 980	11 260	*12 830	8 250	-	-	*10 540	6 820	8.6 m	
	5 ft lb	-	-	-	-	*48,130	36,580	*34,620	24,300	*27,770	17,790	-	-	*23,240	15,030	28.2 ft	
	0 m kg	-	-	-	-	*22 820	16 700	*16 750	11 000	*12 720	8 100	-	-	*10 920	7 030	8.3 m	
	0 ft lb	-	-	-	-	*49,480	35,950	*36,320	23,720	*27,410	17,470	-	-	*24,080	15,500	27.3 ft	
	-1.5 m kg	-	-	*17 770	*17 770	*22 010	16 720	*16 560	10 940	12 710	8 080	-	-	*12 050	7 700	7.8 m	
	-5 ft lb	-	-	*40,440	*40,440	*47,770	35,980	*35,890	23,590	*27,400	17,470	-	-	*26,630	17,020	25.5 ft	
	-3 m kg	-	-	*26 490	*26 490	*19 850	16 960	*15 050	11 080	-	-	-	-	*12 530	9 240	6.9 m	
-10 ft lb	-	-	*57,540	*57,540	*42,980	36,500	*32,410	23,920	-	-	-	-	*27,640	20,540	22.4 ft		
-4.5 m kg	-	-	-	-	*15 320	*15 320	-	-	-	-	-	-	*12 280	*12 280	5.4 m		
-15 ft lb	-	-	-	-	*32,540	*32,540	-	-	-	-	-	-	*26,950	*26,950	17.5 ft		
Boom: 6.45 m (21' 2") Arm: 2.6 m (8' 6") Shoe: 900 mm (36") CWT: 7 250 kg (15,980 lb)	7.5 m kg	-	-	-	-	-	-	-	-	-	-	-	-	*10 420	10 030	7.0 m	
	25 ft lb	-	-	-	-	-	-	-	-	-	-	-	-	-	*23,030	22,630	22.7 ft
	6 m kg	-	-	-	-	-	-	-	*11 020	*11 020	*10 360	8 950	-	-	*10 360	8 120	8.0 m
	20 ft lb	-	-	-	-	-	-	-	*24,000	*24,000	*22,790	19,240	-	-	*22,840	18,080	25.9 ft
	4.5 m kg	-	-	-	-	*16 080	*16 080	*12 580	12 220	*10 970	8 740	-	-	*10 480	7 150	8.5 m	
	15 ft lb	-	-	-	-	*34,490	*34,490	*27,240	26,380	*23,930	18,850	-	-	*23,100	15,840	27.9 ft	
	3 m kg	-	-	-	-	-	-	-	*14 430	11 650	*11 870	8 470	-	-	*10 250	6 670	8.8 m
	10 ft lb	-	-	-	-	-	-	-	*31,200	25,150	*25,810	18,270	-	-	*22,630	14,730	28.9 ft
	1.5 m kg	-	-	-	-	-	-	-	*15 940	11 190	*12 710	8 220	-	-	*10 090	6 530	8.8 m
	5 ft lb	-	-	-	-	-	-	-	*34,500	24,140	*27,600	17,730	-	-	*22,250	14,410	29.0 ft
	0 m kg	-	-	-	-	*21 850	16 600	*16 690	10 930	12 680	8 060	-	-	*10 430	6 720	8.6 m	
	0 ft lb	-	-	-	-	*49,270	35,720	*36,180	23,580	27,310	17,390	-	-	*22,990	14,820	28.2 ft	
	-1.5 m kg	-	-	*14 880	*14 880	*21 890	16 640	*16 550	10 870	12 640	8 030	-	-	*11 420	7 320	8.1 m	
	-5 ft lb	-	-	*33,980	*33,980	*47,540	35,800	*35,870	23,450	*27,260	17,340	-	-	*25,230	16,170	26.4 ft	
	-3 m kg	-	-	*26 310	*26 310	*19 940	16 870	*15 270	11 000	-	-	-	-	*12 160	8 620	7.2 m	
-10 ft lb	-	-	*57,220	*57,220	*43,210	36,300	*32,970	23,740	-	-	-	-	*26,830	19,910	23.5 ft		
-4.5 m kg	-	-	*20 930	*20 930	*16 070	*16 070	-	-	-	-	-	-	*12 110	*11 970	5.8 m		
-15 ft lb	-	-	*45,000	*45,000	*34,370	*34,370	-	-	-	-	-	-	*26,620	*26,620	18.8 ft		
Boom: 6.45 m (21' 2") Arm: 3.2 m (10' 6") Shoe: 900 mm (36") CWT: 7 250 kg (15,980 lb)	7.5 m kg	-	-	-	-	-	-	-	-	*9 370	9 160	-	-	*8 200	*8 200	7.7 m	
	25 ft lb	-	-	-	-	-	-	-	-	*20,660	20,190	-	-	*18,150	*18,150	24.9 ft	
	6 m kg	-	-	-	-	-	-	-	-	*9 500	9 090	-	-	*7 980	7 340	8.5 m	
	20 ft lb	-	-	-	-	-	-	-	-	*20,840	19,570	-	-	*17,600	16,330	27.8 ft	
	4.5 m kg	-	-	-	-	*14 350	*14 350	*11 610	*11 610	*10 260	8 850	*8 790	6 630	*8 060	6 540	9.1 m	
	15 ft lb	-	-	-	-	*30,820	*30,820	*25,170	*25,170	*22,370	19,070	*19,380	14,620	*17,750	14,490	29.7 ft	
	3 m kg	-	-	-	-	*18 440	18 010	*13 580	11 810	*11 290	8 540	9 970	6 500	*8 390	6 140	9.3 m	
	10 ft lb	-	-	-	-	*39,640	38,870	*29,380	25,490	*24,530	18,420	21,460	13,990	*18,470	13,550	30.6 ft	
	1.5 m kg	-	-	-	-	*21 460	17 010	*15 330	11 280	*12 280	8 250	9 820	6 360	*9 030	6 010	9.4 m	
	5 ft lb	-	-	-	-	*46,320	36,670	*33,180	24,340	*26,660	17,800	21,150	13,700	*19,860	13,250	30.7 ft	
	0 m kg	-	-	-	-	*22 610	16 590	*16 410	10 940	12 670	8 040	9 710	6 260	*9 520	6 140	9.1 m	
	0 ft lb	-	-	-	-	*48,990	35,710	*35,560	23,600	27,280	17,350	-	-	*20,990	13,540	29.9 ft	
	-1.5 m kg	-	-	*15 110	*15 110	*22 370	16 510	*16 640	10 810	12 570	7 950	-	-	*10 280	6 600	8.6 m	
	-5 ft lb	-	-	*34,210	*34,210	*48,540	35,530	*36,080	23,300	27,070	17,160	-	-	*22,710	14,580	28.3 ft	
	-3 m kg	*17 590	*17 590	*23 840	*23 840	*20 970	16 660	*15 880	10 860	*12 270	8 020	-	-	*11 520	7 600	7.8 m	
-10 ft lb	*39,430	*39,430	*54,050	*54,050	*45,430	35,840	*34,340	23,420	*26,330	17,340	-	-	*25,430	16,870	25.6 ft		
-4.5 m kg	-	-	*24 300	*24 300	*17 980	17 030	*13 490	11 130	-	-	-	-	*11 830	9 850	6.6 m		
-15 ft lb	-	-	*52,380	*52,380	*38,670	36,680	*28,730	24,060	-	-	-	-	*26,100	22,090	21.3 ft		
9 m kg	-	-	-	-	-	-	-	-	-	-	-	-	*6 920	*6 920	7.2 m		
30 ft lb	-	-	-	-	-	-	-	-	-	-	-	-	*15,410	*15,410	23.3 ft		
Boom: 6.45 m (21' 2") Arm: 3.9 m (12' 10") Shoe: 900 mm (36") CWT: 7 250 kg (15,980 lb)	7.5 m kg	-	-	-	-	-	-	-	-	*8 160	*8 160	-	-	*6 470	*6 470	8.4 m	
	25 ft lb	-	-	-	-	-	-	-	-	*18,070	*18,070	-	-	*14,300	*14,300	27.4 ft	
	6 m kg	-	-	-	-	-	-	-	-	*8 510	*8 510	*7 680	6 830	*6 310	*6 310	9.2 m	
	20 ft lb	-	-	-	-	-	-	-	-	*18,670	*18,670	*14,610	*14,610	*13,930	*13,930	30.2 ft	
	4.5 m kg	-	-	-	-	-	-	*10 380	*10 380	*9 380	8 970	*8 850	6 710	*6 370	5 890	9.7 m	
	15 ft lb	-	-	-	-	-	-	*22,510	*22,510	*20,450	19,330	*19,410	14,440	*14,030	13,030	31.9 ft	
	3 m kg	-	-	-	-	*16 410	*16 410	*12 460	12 010	*10 510	8 630	*9 430	6 540	*6 600	5 540	10.0 m	
	10 ft lb	-	-	-	-	*35,300	*35,300	*26,960	25,910	*22,850	18,600	*20,600	14,080	*14,530	12,240	32.7 ft	
	1.5 m kg	-	-	-	-	*20 040	17 300	*14 440	11 390	*11 650	8 290	9 820	6 350	*7 040	5 430	10.0 m	
	5 ft lb	-	-	-	-	*43,230	37,290	*31,270	24,580	*25,310	17,870	21,160	13,690	*15,500	11,970	32.8 ft	
	0 m kg	-	-	*9 320	*9 320	*22 030	16 630	*15 870	10 950	*12 550	8 020	9 660	6 210	*7 760	5 520	9.8 m	
	0 ft lb	-	-	*21,210	*21,210	*47,680	35,790	*34,390	23,620	*27,240	17,300	20,820	13,390	*17,100	12,170	32.1 ft	
	-1.5 m kg	*9 510	*9 510	*14 220	*14 220	*22 500	16 380	*16 510	10 730	12 490	7 870	9 590	6 140	*8 930	5 860	9.3 m	
	-5 ft lb	*21,230	*21,230	*32,130	*32,130	*48,790	35,240	*35,800	23,130	26,890	16,970	20,680	13,260	*19,720	12,940	30.6 ft	
	-3 m kg	*14 830	*14 830	*20 550	*20 550	*21 740	16 410	*16 250	10 690	12 470	7 850	-	-	*10 300	6 580	8.6 m	
-10 ft lb	*33,200	*33,200	*46,500	*46,500	*47,110	35,310	*35,180	23,060	26,870	16,950	-	-	*22,830	14,590	28.1 ft		
-4.5 m kg	*21 190	*21 190	*27 500	*27 500	*19 600	16 680	*14 770	10 850	-	-	-	-	*11 110	8 080	7.5 m		
-15 ft lb	*47,670	*47,670	*59,360	*59,360	*42,270	35,900	*31,750	23,420	-	-	-	-	*24,540	18,060	24.3 ft		
-6 m kg	-	-	*20 790	*20 790	*15 130	*15 130	-	-	-	-	-	-	*11 300	*11 300	5.8 m		
-20 ft lb	-	-	*44,070	*44,070	*31,910	*31,910	-	-	-	-	-	-	*24,880	*24,880	18.4 ft		

Notes: 1. Machine in "Fine Mode-F" (Power Boost) for lifting capacities. 2. The above loads are in compliance with SAE J1097 and ISO 10567 Hydraulic Excavator Lifting Capacity Standards.

3. Rated loads do not exceed 87% of hydraulic lifting capacity or 75% of tipping load. 4. Rated loads marked with an asterisk (\*) are limited by hydraulic capacity rather than tipping load.

# Specifications.

## LIFTING CAPACITY EC380ELR

Lifting capacity at the arm end without bucket.

For lifting capacity including bucket, simply subtract actual weight of the direct fit bucket or the bucket with quick coupler from the following values.

	Lifting hook related to ground level	0 m, 0 ft		1.5 m, 5 ft		3.0 m, 10 ft		4.5 m, 15 ft		6.0 m, 20 ft		7.5 m, 25 ft		9.0 m, 30 ft	
		Along UC	Across UC	Along UC	Across UC	Along UC	Across UC	Along UC	Across UC	Along UC	Across UC	Along UC	Across UC	Along UC	Across UC
	10.5 m kg	-	-	-	-	-	-	-	-	-	-	-	-	*4 130	*4 130
	35 ft lb	-	-	-	-	-	-	-	-	-	-	-	-	*8,940	*8,940
	9 m kg	-	-	-	-	-	-	-	-	-	-	-	-	*4 660	4 130
	30 ft lb	-	-	-	-	-	-	-	-	-	-	-	-	*10,090	8,910
	7.5 m kg	-	-	-	-	-	-	-	-	-	-	-	-	*5 140	3 770
	25 ft lb	-	-	-	-	-	-	-	-	-	-	-	-	*11,140	8,130
	6 m kg	-	-	-	-	-	-	-	-	-	-	*6 000	*6 000	*5 540	3 490
	20 ft lb	-	-	-	-	-	-	-	-	-	-	*13,080	*13,080	*12,000	7,520
	4.5 m kg	-	-	-	-	-	-	-	-	*7 540	*7 540	*6 720	*6 720	5 790	3 280
	15 ft lb	-	-	-	-	-	-	-	-	*16,310	*16,310	*14,600	*14,600	12,490	7,080
	3 m kg	-	-	-	-	-	-	*11 130	*11 130	*8 820	8 650	*7 530	6 650	5 660	3 160
	10 ft lb	-	-	-	-	-	-	*23,950	*23,950	*19,070	18,690	*16,340	14,350	12,200	6,810
	1.5 m kg	-	-	-	-	-	-	*13 040	10 990	*10 030	8 150	*8 330	6 330	5 600	3 110
	5 ft lb	-	-	-	-	-	-	*28,120	23,760	*21,700	17,600	*18,070	13,660	12,070	6,700
	0 m kg	-	-	-	-	*7 650	*7 650	*14 360	10 460	*11 010	7 770	*9 020	6 070	5 610	3 120
	0 ft lb	-	-	-	-	*16,860	*16,860	*31,060	22,590	*23,840	16,770	*19,570	13,100	12,110	6,730
	-1.5 m kg	-	-	-	-	*9 590	*9 590	*15 090	10 200	*11 670	7 530	*9 380	5 890	*5 610	3 190
	-5 ft lb	-	-	-	-	*21,960	*21,960	*32,680	21,990	*25,290	16,250	*20,230	12,710	*12,060	6,910
	-3 m kg	*6 830	*6 830	*8 480	*8 480	*12 870	*12 870	*15 300	10 120	*11 990	7 420	*9 280	5 800	*5 060	3 340
	-10 ft lb	*15,300	*15,300	*19,140	*19,140	*29,350	*29,350	*33,160	21,810	*25,980	16,010	*20,020	12,510	*10,780	7,240
	-4.5 m kg	*10 000	*10 000	*12 140	*12 140	*17 180	15 760	*15 050	10 170	*11 930	7 420	*9 280	5 800	*4 100	3 580
	-15 ft lb	*22,460	*22,460	*27,420	*27,420	*39,210	33,910	*32,600	21,930	*25,830	16,030	*20,030	12,520	*8,460	7,830
	-6 m kg	*13 610	*13 610	*16 570	*16 570	*18 570	16 080	*14 270	10 350	*11 400	7 540	*9 300	5 900	-	-
	-20 ft lb	*30,630	*30,630	*37,570	*37,570	*40,140	34,620	*30,850	22,330	*24,610	16,300	*19,990	12,780	-	-
	-7.5 m kg	-	-	*22 510	*22 510	*16 410	*16 410	*12 770	10 670	*10 150	7 800	-	-	-	-
	-25 ft lb	-	-	*48,280	*48,280	*35,230	*35,230	*27,370	23,070	*21,650	16,910	-	-	-	-
	-9 m kg	-	-	-	-	*12 770	*12 770	*9 830	*9 830	-	-	-	-	-	-
	-30 ft lb	-	-	-	-	*26,760	*26,760	*20,310	*20,310	-	-	-	-	-	-
Boom: 8.5 m (27' 11") Arm: 5.0 m (16' 5") Shoe: 800 mm (32") CWT: 8 200 kg (18,080 lb)	Lifting hook related to ground level	10.5 m, 35 ft		12 m, 40 ft		Max. Reach									
		Along UC	Across UC	Along UC	Across UC	Along UC	Across UC	max.							
	10.5 m kg	-	-	-	-	*5 450	*5 450	10.1 m							
	35 ft lb	-	-	-	-	*12,110	*12,110	32.7 ft							
	9 m kg	*5 390	*5 390	-	-	*5 180	5 160	11.2 m							
	30 ft lb	*12,000	*12,000	-	-	*11,470	*11,470	36.4 ft							
	7.5 m kg	*5 460	*5 460	-	-	*5 060	4 520	12.0 m							
	25 ft lb	*12,040	*12,040	-	-	*11,160	10,050	39.2 ft							
	6 m kg	*5 770	5 670	*5 700	4 480	*5 030	4 090	12.6 m							
	20 ft lb	*12,630	12,200	*12,590	9,590	*11,100	9,070	41.1 ft							
	4.5 m kg	*6 210	5 480	*5 940	4 380	*5 090	3 810	12.9 m							
	15 ft lb	*13,570	11,800	*13,030	9,400	*11,220	8,430	42.4 ft							
	3 m kg	*6 740	5 270	*6 260	4 250	*5 240	3 640	13.1 m							
	10 ft lb	*14,680	11,350	*13,680	9,140	*11,540	8,040	43.0 ft							
	1.5 m kg	*7 280	5 060	6 450	4 130	*5 480	3 560	13.1 m							
	5 ft lb	*15,830	10,910	13,880	8,880	*12,070	7,860	43.1 ft							
	0 m kg	7 680	4 890	6 330	4 020	5 650	3 570	13.0 m							
	0 ft lb	16,560	10,540	13,650	8,660	12,470	7,890	42.6 ft							
	-1.5 m kg	7 550	4 770	6 260	3 950	5 830	3 680	12.6 m							
	-5 ft lb	16,280	10,280	13,510	8,530	12,880	8,130	41.4 ft							
	-3 m kg	7 490	4 710	6 260	3 950	6 190	3 910	12.1 m							
	-10 ft lb	16,160	10,170	13,800	8,710	13,690	8,650	39.6 ft							
	-4.5 m kg	7 510	4 730	-	-	6 810	4 310	11.3 m							
	-15 ft lb	16,240	10,240	-	-	15,100	9,560	37.0 ft							
	-6 m kg	-	-	-	-	*7 690	5 000	10.3 m							
	-20 ft lb	-	-	-	-	*17,010	11,150	33.5 ft							
	-7.5 m kg	-	-	-	-	*8 010	6 280	8.9 m							
	-25 ft lb	-	-	-	-	*17,720	14,180	28.7 ft							
	-9 m kg	-	-	-	-	*8 170	*8 170	6.9 m							
	-30 ft lb	-	-	-	-	*17,990	*17,990	21.8 ft							

Notes: 1. Machine in "Fine Mode-F" (Power Boost) for lifting capacities. 2. The above loads are in compliance with SAE J1097 and ISO 10567 Hydraulic Excavator Lifting Capacity Standards. 3. Rated loads do not exceed 87% of hydraulic lifting capacity or 75% of tipping load. 4. Rated loads marked with an asterisk (\*) are limited by hydraulic capacity rather than tipping load.

## LIFTING CAPACITY EC380ELR

Lifting capacity at the arm end without bucket.

For lifting capacity including bucket, simply subtract actual weight of the direct fit bucket or the bucket with quick coupler from the following values.

Lifting hook related to ground level	0 m, 0 ft		1.5 m, 5 ft		3.0 m, 10 ft		4.5 m, 15 ft		6.0 m, 20 ft		7.5 m, 25 ft		9.0 m, 30 ft	
	Along UC	Across UC	Along UC	Across UC	Along UC	Across UC	Along UC	Across UC	Along UC	Across UC	Along UC	Across UC	Along UC	Across UC
10.5 m kg	-	-	-	-	-	-	-	-	-	-	-	-	*4 130	*4 130
35 ft lb	-	-	-	-	-	-	-	-	-	-	-	-	*8,940	*8,940
9 m kg	-	-	-	-	-	-	-	-	-	-	-	-	*4 660	4 130
30 ft lb	-	-	-	-	-	-	-	-	-	-	-	-	*10,090	8,910
7.5 m kg	-	-	-	-	-	-	-	-	-	-	-	-	*5 140	3 770
25 ft lb	-	-	-	-	-	-	-	-	-	-	-	-	*11,140	8,130
6 m kg	-	-	-	-	-	-	-	-	-	-	*6 000	*6 000	*5 540	3 490
20 ft lb	-	-	-	-	-	-	-	-	-	-	*13,080	*13,080	*12,000	7,520
4.5 m kg	-	-	-	-	-	-	-	-	*7 540	*7 540	*6 720	*6 720	5 790	3 280
15 ft lb	-	-	-	-	-	-	-	-	*16,310	*16,310	*14,600	*14,600	12,490	7,080
3 m kg	-	-	-	-	-	-	*11 130	*11 130	*8 820	8 730	*7 530	6 710	5 660	3 160
10 ft lb	-	-	-	-	-	-	*23,950	*23,950	*19,070	18,860	*16,340	14,490	12,200	6,810
1.5 m kg	-	-	-	-	-	-	*13 040	11 100	*10 030	8 230	*8 330	6 390	5 600	3 110
5 ft lb	-	-	-	-	-	-	*28,120	23,990	*21,700	17,770	*18,070	13,800	12,070	6,700
0 m kg	-	-	-	-	*7 650	*7 650	*14 360	10 570	*11 010	7 850	*9 020	6 130	5 610	3 120
0 ft lb	-	-	-	-	*16,860	*16,860	*31,060	22,820	*23,840	16,940	*19,570	13,240	12,110	6,730
-1.5 m kg	-	-	-	-	*9 590	*9 590	*15 090	10 300	*11 670	7 610	9 490	5 950	*5 610	3 190
-5 ft lb	-	-	-	-	*21,960	*21,960	*32,680	22,220	*25,290	16,420	20,450	12,850	*12,060	6,910
-3 m kg	*6 830	*6 830	*8 480	*8 480	*12 870	*12 870	*15 300	10 220	*11 990	7 500	9 390	5 860	*5 060	3 340
-10 ft lb	*15,300	*15,300	*19,140	*19,140	*29,350	*29,350	*33,160	22,040	*25,980	16,180	20,240	12,650	*10,780	7,240
-4.5 m kg	*10 000	*10 000	*12 140	*12 140	*17 180	15 920	*15 050	10 280	*11 930	7 510	9 390	5 860	*4 100	3 580
-15 ft lb	*22,460	*22,460	*27,420	*27,420	*39,210	34,260	*32,600	22,160	*25,830	16,200	20,250	12,660	*8,460	7,830
-6 m kg	*13 610	*13 610	*16 570	*16 570	*18 570	16 240	*14 270	10 460	*11 400	7 620	9 300	5 970	-	-
-20 ft lb	*30,630	*30,630	*37,570	*37,570	*40,140	34,960	*30,850	22,570	*24,610	16,470	*19,990	12,920	-	-
-7.5 m kg	-	-	*22 510	*22 510	*16 410	*16 410	*12 770	10 780	*10 150	7 880	-	-	-	-
-25 ft lb	-	-	*48,280	*48,280	*35,230	*35,230	*27,370	23,300	*21,650	17,080	-	-	-	-
-9 m kg	-	-	-	-	*12 770	*12 770	*9 830	9 830	-	-	-	-	-	-
-30 ft lb	-	-	-	-	*26,760	*26,760	*20,310	*20,310	-	-	-	-	-	-
Lifting hook related to ground level	10.5 m, 35 ft		12 m, 40 ft		Max. Reach									
	Along UC	Across UC	Along UC	Across UC	Along UC	Across UC	max.							
10.5 m kg	-	-	-	-	*5 450	*5 450	10.1 m							
35 ft lb	-	-	-	-	*12,110	*12,110	32.7 ft							
9 m kg	*5 390	*5 390	-	-	*5 180	*5 180	11.2 m							
30 ft lb	*12,000	*12,000	-	-	*11,470	*11,470	36.4 ft							
7.5 m kg	*5 460	*5 460	-	-	*5 060	4 560	12.0 m							
25 ft lb	*12,040	*12,040	-	-	*11,160	10,160	39.2 ft							
6 m kg	*5 770	5 730	*5 700	4 520	*5 030	4 130	12.6 m							
20 ft lb	*12,630	12,320	*12,590	9,690	*11,100	9,170	41.1 ft							
4.5 m kg	*6 210	5 540	*5 940	4 420	*5 090	3 850	12.9 m							
15 ft lb	*13,570	11,920	*13,030	9,500	*11,220	8,520	42.4 ft							
3 m kg	*6 740	5 320	*6 260	4 300	*5 240	3 680	13.1 m							
10 ft lb	*14,680	11,470	*13,680	9,240	*11,540	8,130	43.0 ft							
1.5 m kg	*7 280	5 120	6 520	4 170	*5 480	3 600	13.1 m							
5 ft lb	*15,830	11,030	14,040	8,980	*12,070	7,950	43.1 ft							
0 m kg	*7 750	4 940	6 400	4 070	5 720	3 620	13.0 m							
0 ft lb	16,740	10,660	13,800	8,760	12,610	7,980	42.6 ft							
-1.5 m kg	7 630	4 820	6 330	4 000	5 900	3 730	12.6 m							
-5 ft lb	16,460	10,400	13,660	8,630	13,020	8,220	41.4 ft							
-3 m kg	7 570	4 760	6 330	3 990	6 260	3 960	12.1 m							
-10 ft lb	16,340	10,280	13,950	8,800	13,850	8,750	39.6 ft							
-4.5 m kg	7 600	4 790	-	-	6 880	4 360	11.3 m							
-15 ft lb	16,420	10,360	-	-	15,270	9,670	37.0 ft							
-6 m kg	-	-	-	-	*7 690	5 050	10.3 m							
-20 ft lb	-	-	-	-	*17,010	11,280	33.5 ft							
-7.5 m kg	-	-	-	-	*8 010	6 350	8.9 m							
-25 ft lb	-	-	-	-	*17,720	14,330	28.7 ft							
-9 m kg	-	-	-	-	*8 170	*8 170	6.9 m							
-30 ft lb	-	-	-	-	*17,990	*17,990	21.8 ft							

Notes: 1. Machine in "Fine Mode-F" (Power Boost) for lifting capacities. 2. The above loads are in compliance with SAE J1097 and ISO 10567 Hydraulic Excavator Lifting Capacity Standards. 3. Rated loads do not exceed 87% of hydraulic lifting capacity or 75% of tipping load. 4. Rated loads marked with an asterisk (\*) are limited by hydraulic capacity rather than tipping load.

# Equipment.

## STANDARD EQUIPMENT

	EC350E	EC380E
<b>Engine</b>		
Turbocharged, 4 stroke diesel engine with water cooling, direct injection and charged air cooler that meets Tier 4f requirements	•	•
Air filter with indicator	•	•
Air intake heater	•	•
Cyclone pre-cleaner	•	•
Electric engine shut-off	•	•
Fuel filter and water separator	•	•
Alternator, 80 A	•	•
<b>Electric/Electronic control system</b>		
Contronics		
Advanced mode control system	•	•
Self-diagnostic system	•	•
Machine status indication	•	•
Engine speed sensing power control	•	•
Automatic idling system	•	•
One-touch power boost	•	•
Safety stop/start function	•	•
Adjustable 8 inch LCD color monitor	•	•
Master electrical disconnect switch	•	•
Engine restart prevention circuit	•	•
High-capacity halogen lights:		
Frame-mounted 2	•	•
Boom-mounted 2	•	•
Batteries, 2 x 12 V / 200 Ah	•	•
Start motor, 24 V / 7 kW	•	•
Travel alarm	•	•
<b>Hydraulic system</b>		
Boom float without hose rupture valves	•	•
Overload warning device	•	•
Automatic sensing hydraulic system		
2-pump flow bucket circuit	•	•
Summation system	•	•
Boom priority	•	•
Arm priority	•	•
Swing priority	•	•
Boom, arm and bucket regeneration valves	•	•
Swing anti-rebound valves	•	•
Boom and arm holding valves	•	•
Multi-stage filtering system	•	•
Cylinder cushioning	•	•
Cylinder contamination seals	•	•
Auxiliary hydraulic valve	•	•
Automatic two-speed travel motors	•	•
Hydraulic oil, longlife oil 46	•	•
<b>Frame</b>		
Access way with handrail	•	•
Tool storage area	•	•
Punched metal anti-slip plates	•	•
Undercover (heavy-duty)	•	•
<b>Cab and interior</b>		
ROPS (ISO12117-2) certified cab	•	•
Silicon oil and rubber mounts with spring	•	•
Travel pedals and hand levers	•	•
Adjustable operator seat and joystick control console	•	•
Control joysticks with 4 switches each	•	•
Heater & air-conditioner, automatic	•	•
Flexible antenna	•	•
AM/FM stereo with MP3, USB and bluetooth input	•	•
Hydraulic safety lock lever	•	•

	EC350E	EC380E
<b>Cab and interior</b>		
Cab, all-weather sound suppressed, includes:		
Cup holders	•	•
Door locks	•	•
Tinted glass	•	•
Floor mat	•	•
Horn	•	•
Large storage area	•	•
Pull-up type front window	•	•
Removable lower windshield	•	•
Seat belt	•	•
Safety glass	•	•
Sun screens, front, roof, rear	•	•
Windshield wiper with intermittent feature	•	•
Rear view camera	•	•
Master key	•	•
Undercarriage		
Undercover (heavy-duty)	•	•
Hydraulic track adjusters	•	•
Greased and sealed track link	•	•
Track Guard	•	•
Track shoes		
800 mm (32") with triple grousers	•	•
Digging equipment		
Boom:		
6.45 m (21' 2") GP	•	•
6.45 m (21' 2") HD		•
Arm:		
3.2 m (10' 6") GP	•	•
3.2 m (10' 6") HD		•
Manual centralized lubrication	•	•
Pilot control pattern change	•	•
Opening top hatch	•	•

## OPTIONAL EQUIPMENT

	EC350E	EC380E
<b>Engine</b>		
Block heater: 120 V	•	•
Oil bath pre-cleaner	•	•
Diesel coolant heater, 10 kW	•	•
Water separator with heater	•	•
Auto engine shutdown	•	•
Fuel filler pump: 50 l/min (13.2 gal/min), with automatic shut-off	•	•
<b>Electric</b>		
Extra work lights: Halogen/LED		
Cab-mounted 3	•	•
Boom-mounted 2	•	•
Counterweight-mounted 1	•	•
Anti-theft system	•	•
Rotating warning beacon	•	•
<b>Hydraulic system</b>		
Hose rupture valve: arm	•	•
Hose rupture valve: boom	•	•
Boom float function	•	•
Hydraulic piping:		
Work tool management system (up to 20 programmable memories)	•	•
Breaker & shear, 1 or 2 pump flow	•	•
Breaker & shear: variable flow and pressure pre-setting	•	•
Additional return filter	•	•
Slope & rotator	•	•
Grapple	•	•
Oil drain line	•	•
Quick coupler piping	•	•

## OPTIONAL EQUIPMENT

	EC350E	EC380E
<b>Hydraulic system</b>		
Volvo hydraulic quick coupler S3	•	•
Volvo hydraulic quick coupler VQC-HU,DR38	•	•
Hydraulic oil, biodegradable 46	•	•
Hydraulic oil, longlife oil 32	•	•
Hydraulic oil, longlife oil 68	•	•
<b>Counterweight</b>		
6 200 kg (13,670 lb)	•	•
6 700 kg (14,770 lb)	•	•
7 250 kg (15,990 lb)	•	•
8 200 kg (18,080 lb) for long reach		•
<b>Cab and interior</b>		
Fabric seat with heater and air suspension	•	•
Falling object guard (FOG)	•	•
Frame-mounted	•	•
Cab-mounted	•	•
Cab-mounted falling object protective structure (FOPS)	•	•
Smoker kit (ashtray and lighter)	•	•
Safety net for front window	•	•
Lower wiper with intermittent control	•	•
Anti-vandalism kit	•	•
Rain shield	•	•

	EC350E	EC380E
<b>Undercarriage</b>		
Full track guard	•	•
<b>Track shoes</b>		
Track shoes 600/700/900 mm (24/28/36") with triple grousers	•	•
Track shoes 600 mm (24") HD with triple grousers		•
Track shoes 600 mm (24") with double grousers	•	•
Track shoes 750 mm (30") with single grousers	•	
<b>Digging equipment</b>		
Boom:		
6.2 m (20' 4") ME	•	•
8.5 m (27' 11") LR		•
Arm:		
2.6 m (8' 6") ME	•	•
3.9 m (12' 10") GP	•	
3.9 m (12' 10") HD		•
5.0 m (16' 5") LR		•
Linkage with lifting eye	•	•
<b>Service</b>		
Tool kit, daily maintenance	•	•
Tool kit, full scale	•	•
Automatic lubrication system	•	•
Cleaner kit, air blow gun	•	•

## Selection of Volvo optional equipment

### Auxiliary hydraulics (Breaker/Shear, Tilt / Rotator)



### Side-view camera



### LED Lights



### Cleaner kit, air blow gun

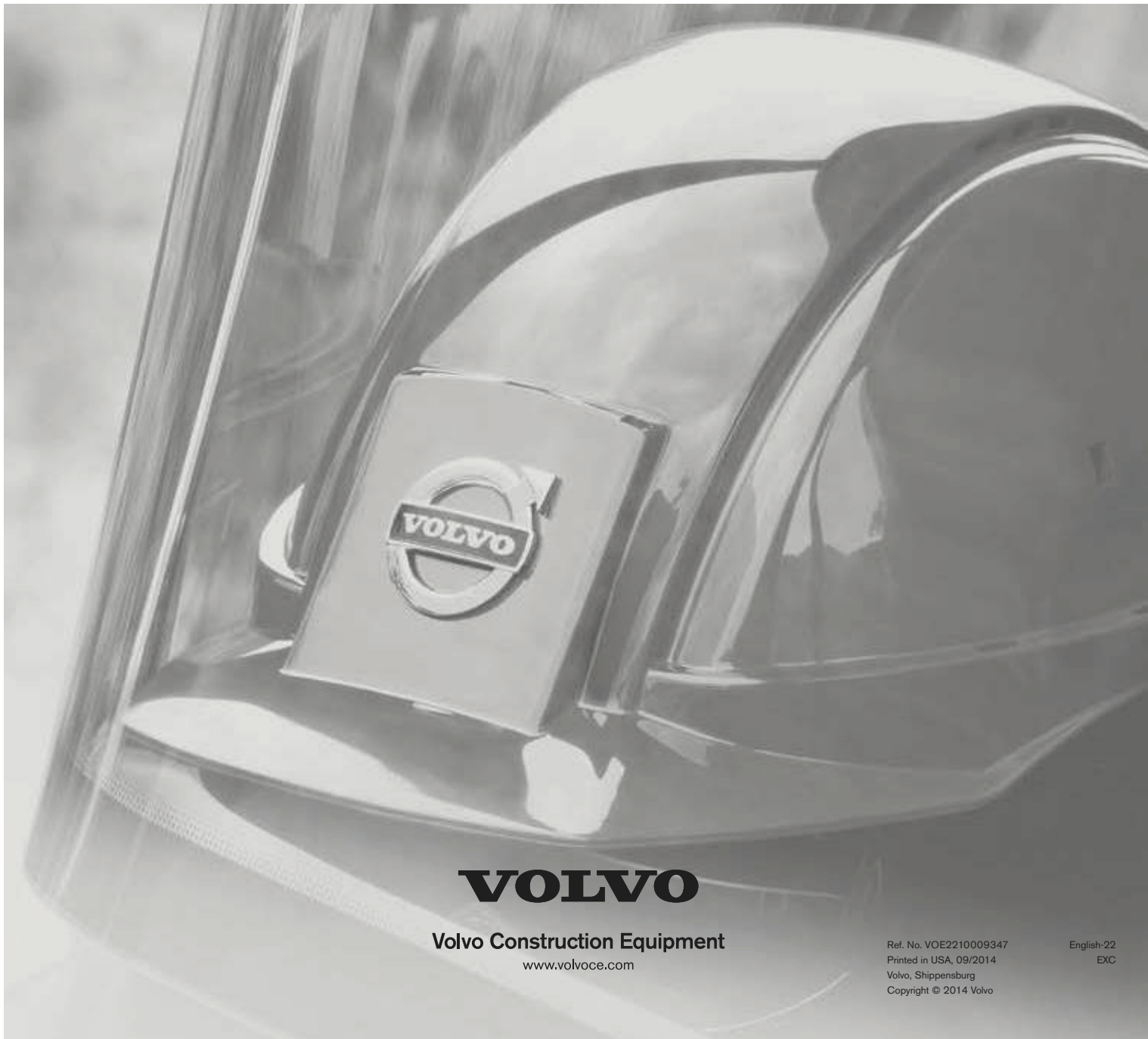


### Long reach (EC380E only)



### Mass excavation





**VOLVO**

**Volvo Construction Equipment**  
[www.volvoce.com](http://www.volvoce.com)

Ref. No. VOE2210009347  
Printed in USA, 09/2014  
Volvo, Shippensburg  
Copyright © 2014 Volvo

English-22  
EXC