



Volvo Construction Equipment

EC480E

VOLVO EXCAVATORS 45.5-53.3 t / 100,310-117,510 lb 378 hp



E is for efficiency.

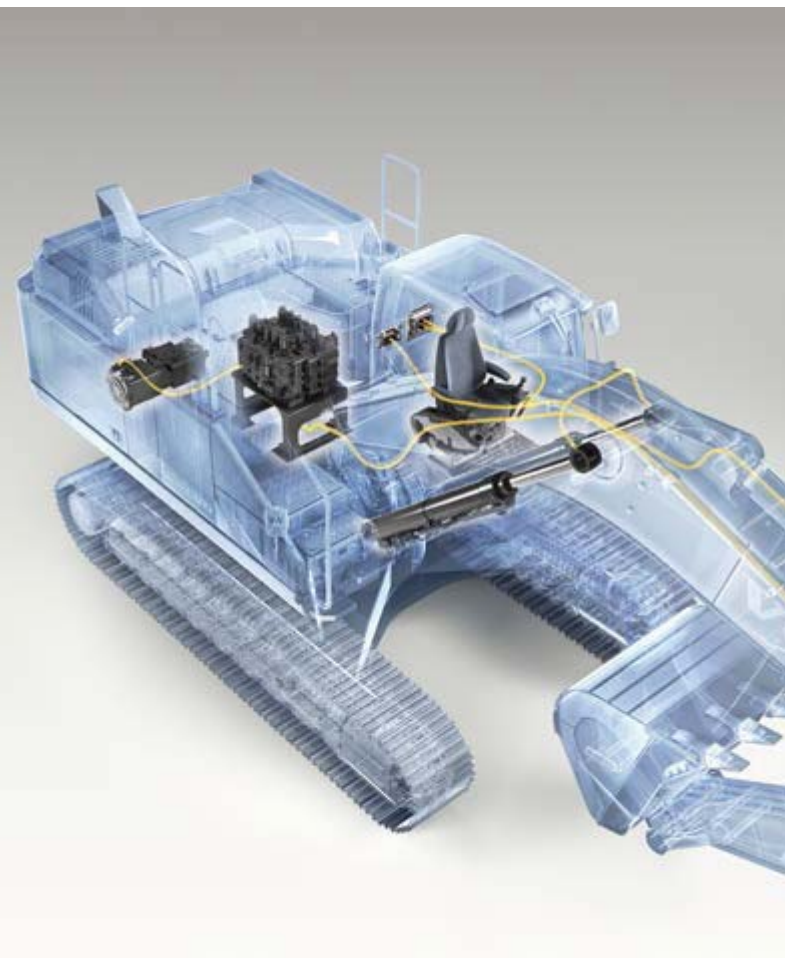
Introducing the EC480E crawler excavator from Volvo – a powerful and efficient production machine designed to reduce fuel consumption and increase productivity. With advanced technology including Volvo's unique ECO mode and a new electro-hydraulic control system, the EC480E delivers fuel efficiency improvement.

Advanced hydraulics

The new electro-hydraulic system uses intelligent technology to control on-demand flow and reduce internal losses in the hydraulic circuit. This increases controllability, shortens cycle times and improves fuel efficiency – resulting in higher productivity and performance.

Work modes

Volvo's unique, integrated work mode system now includes the G4 mode for optimum fuel efficiency and machine performance. Operators can choose the best work mode for the task at hand – select from I (Idle), F (Fine), G (General) and H (Heavy).



Automatic idling system

Engine speed is reduced to idle when the controls are inactive for a pre-set amount of time (between 3 and 20 seconds). This reduces fuel consumption and noise.

Auto engine shut down

To reduce fuel consumption, the engine will automatically switch off when the machine is inactive for a pre-set amount of time (five minutes is the default setting).

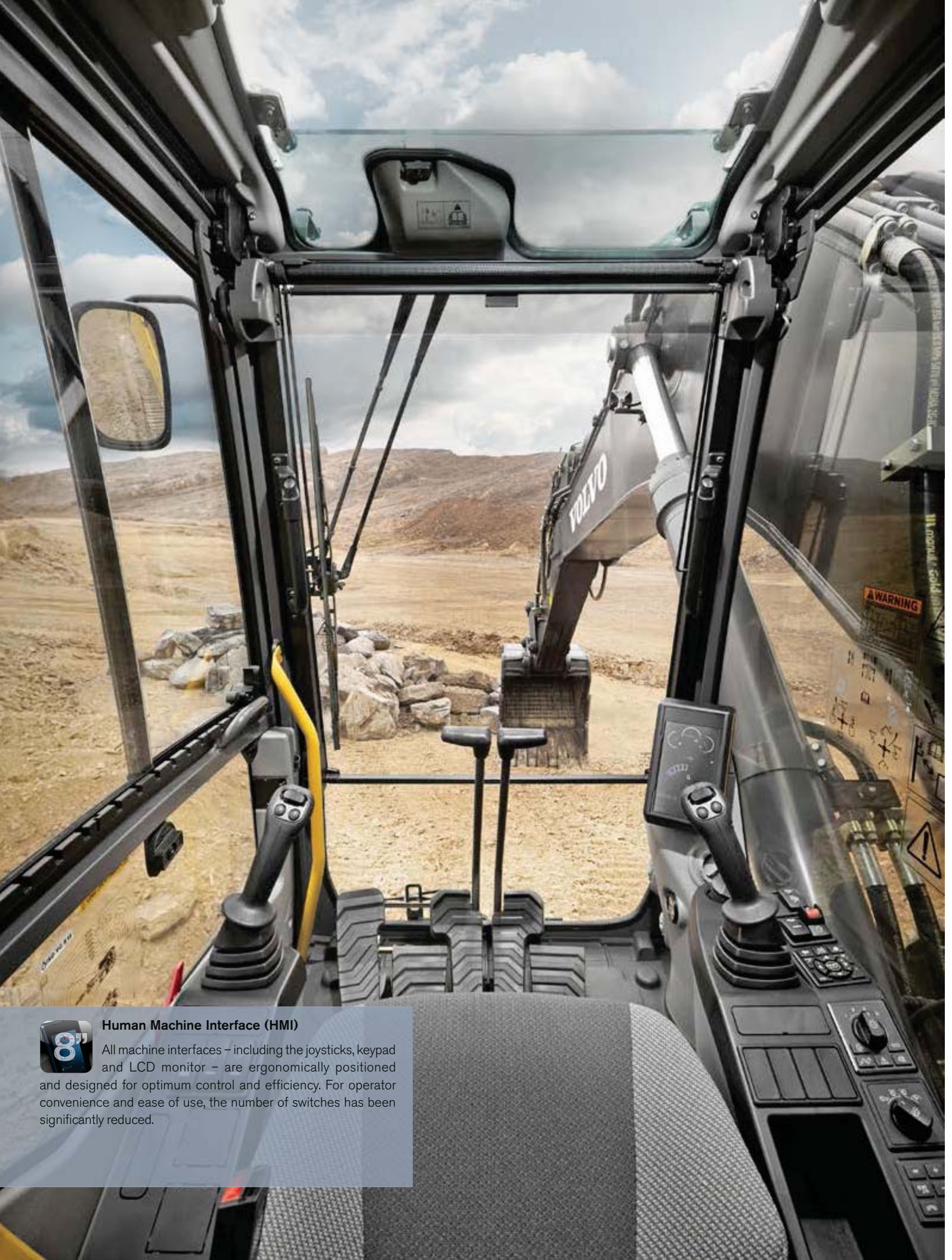
Fuel consumption display

A gauge bar on the monitor measures both instantaneous fuel consumption and average fuel consumption. This allows machine owners and operators to monitor fuel usage on different job sites.



ECO mode

Volvo's unique ECO mode optimizes the hydraulic system to reduce flow and pressure losses – resulting in improved fuel efficiency without any loss of performance in most operating conditions. ECO mode is automatically selected but can be switched off via the keypad.



Human Machine Interface (HMI)

All machine interfaces – including the joysticks, keypad and LCD monitor – are ergonomically positioned and designed for optimum control and efficiency. For operator convenience and ease of use, the number of switches has been significantly reduced.

Productivity at your fingertips.

The EC480E has been expertly designed with both the machine owner and operator in mind. With ideally placed controls and switches and a user-friendly LCD monitor and keypad, the task at hand becomes easier and operators will work with increased efficiency – resulting in more productivity.

Keypad

The optimally positioned keypad allows the operator to easily navigate through the LCD monitor and activate machine functions in a safe and comfortable way. The functionality of the camera, air conditioning and lights can be customized via the hot key – enabling the operator to select and save desired configurations.

LCD monitor

The new, color, eight inch LCD monitor displays machine status information including fuel consumption data and service interval alerts – enabling increased uptime and high productivity. The user-friendly design is easy to read in any light conditions.



Shortcut switch

The windshield wipers, camera, audio mute function can be assigned to a shortcut switch located on the joystick. This allows the operator to easily control the selected function by simply pressing a switch.

Seat belt warning alarm

If the seat belt is not fastened when the ignition key is turned, a sensor triggers an alarm which sounds for three seconds.

Bluetooth®

For added convenience, operators can now connect a Bluetooth device to the machine.

The source of productivity.

Volvo puts customer needs at the heart of its design process. That's why the EC480E not only increases productivity but also improves fuel efficiency and meets the latest Stage IV/Tier 4 Final engine emission legislation. Capitalize on high torque at low rpm and experience superior performance and reduced fuel consumption.

Volvo After Treatment System

During the fully automatic regeneration process, particulate matter in the Diesel Particulate Filter is burnt off without interrupting operation, performance or productivity. Volvo uses Selective Catalytic Reduction

Diesel-driven heater

The optional diesel-driven coolant heater helps to start the engine in low temperatures while simultaneously heating the cab. The heater can be set in advance to engage at a specific date and time.



technology where AdBlue®/Diesel Exhaust Fluid is heated to produce ammonia. This causes a chemical reaction which converts NOx to nitrogen and CO² – both of which are naturally found in the air. Neither process interrupts machine operation, performance or productivity.

® = registered trademark of the Verband der Automobilindustrie e.V. (VDA)

Cooling fan

The hydraulically-driven, electronically controlled cooling fan regulates the temperature of the vital components. It reduces fuel consumption and noise. The optional reversible functionality – which blows air in the opposite direction – enables self-cleaning of the cooling units.



Volvo engine

Featuring proven, advanced technology and built on decades of experience, Volvo's robust D13 Stage IV/Tier 4 Final engine boasts more power while reducing both fuel consumption and emissions and delivering superior quality, reliability and durability.



Reinforced undercarriage

With a strong three-piece undercarriage and a high strength tensile steel X-shaped frame, Volvo excavators are built to withstand tough conditions. For superior durability, the undercarriage components are reinforced – ensuring long life and high uptime.

Reinforced quality.

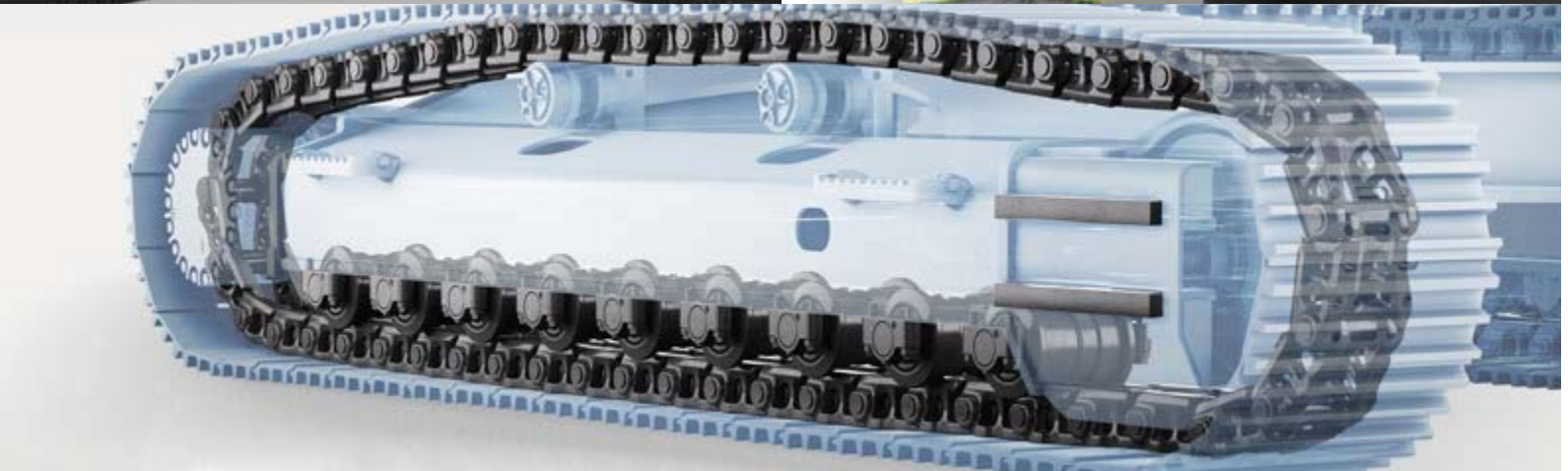
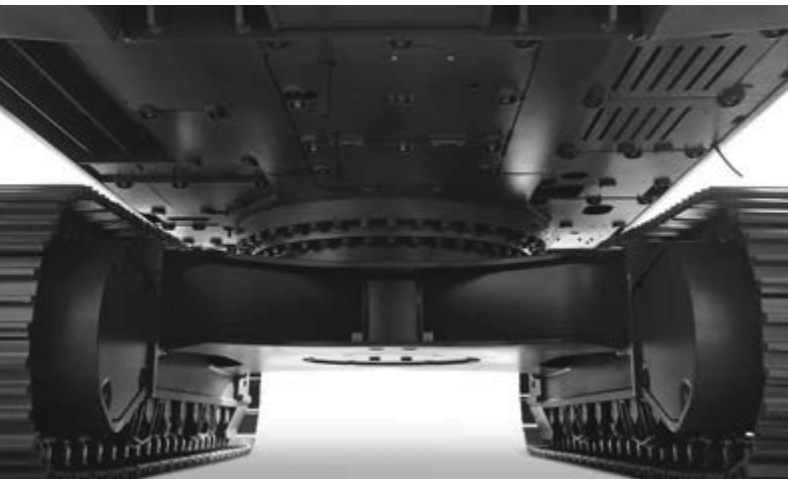
If you're looking for a strong and reliable excavator to handle tough conditions then look no further than the EC480E. Whether you're working on a quarry, in mass excavation or any other application, this robust, heavy-duty production machine has the quality and durability you need to work on demanding job sites.

Superstructure undercover

The heavy-duty superstructure undercover plates increase durability by providing additional protection to the underside of the machine in tough applications – preventing damage from rock and debris.

Doors and hinges

Volvo's durable design features a rigid side door with a robust handle and hinges for superior durability.



Robust design

The reinforced idler frame, track links and bottom rollers are built to withstand tough conditions for improved durability and reliability in demanding applications.

Upping your uptime.

Maintaining and servicing construction equipment is essential in order to sustain maximum performance and productivity – but this shouldn't be a complicated or time consuming task. With large, wide opening compartment doors and grouped service points, Volvo makes maintenance easy. Increase your uptime with Volvo.

Service access

Grouped filters are quick and easy to access from ground level. To facilitate fast servicing, grouped greasing points are easily accessed with the machine in one position.



Storage space

A large storage compartment provides a safe and convenient location for items including a toolbox and grease can.

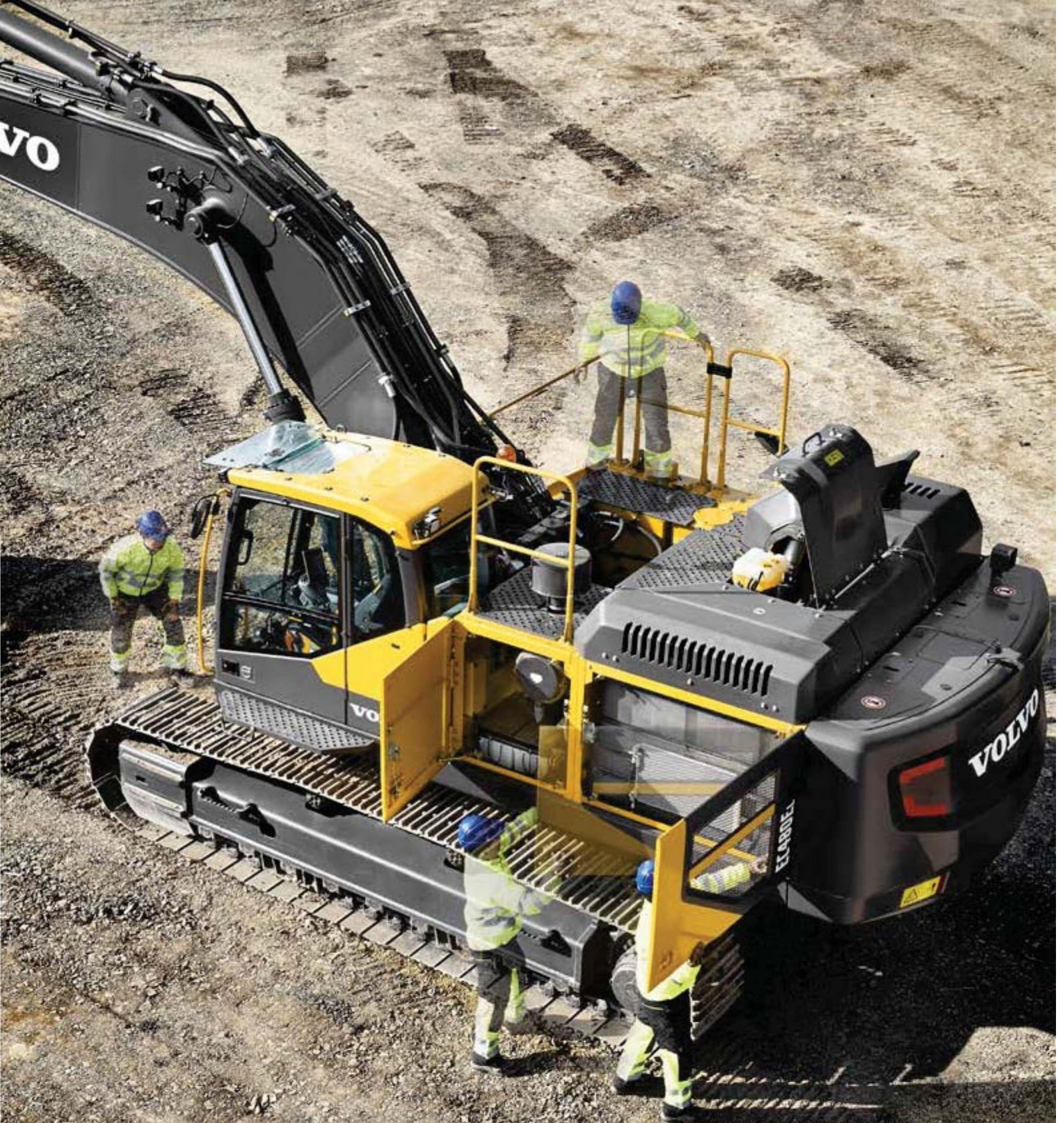
Anti-slip plates

Punched anti-slip plates provide superior grip and increased safety. The design facilitates easy cleaning.



Handrails

Handrails and full size guardrails provide safe and easy access to the cab and superstructure.



Single module cooler

The radiator, charged air cooler and hydraulic oil cooler are situated side-by-side on a single layer to maximize efficiency, reduce blockages and aid cleaning. The system is easily accessed from ground level by simply opening the side door.



Attachments

Volvo's durable attachments have been purpose-built to work in perfect harmony with Volvo machines, forming one solid, reliable unit. With functions and properties ideally matched, Volvo attachments are an integrated part of the excavator for which they're intended – delivering maximum productivity.

The perfect match.

Maximize your productivity and profitability with the EC480E and Volvo's durable range of attachments. Increase your versatility, access more applications and effectively perform a variety of tasks – all while experiencing faster cycle times and excellent control. Get the most out of your excavator with Volvo.

Bucket range

Volvo's general purpose buckets are the perfect tool for digging and re-handling in soft to medium conditions. Heavy-duty buckets are intended for productive digging in compact materials. Both provide maximum productivity and long life.



Optional auxiliary hydraulics

Factory fitted breaker and shear piping (X1) as well as tilt and rotator piping (X3) increase versatility by enabling a wide range of additional attachments to be used.



S-type quick coupler

The Volvo S-type quick coupler is designed to work with Volvo attachments – delivering ultimate compatibility and unrivalled performance.

Genuine Volvo wear parts

Volvo offers a selection of economic, replaceable wear parts including high quality teeth, segments, side cutters, adapters and shrouds to protect the bucket and ensure long life.

Universal quick coupler

The Volvo universal quick coupler offers maximum versatility. It picks up a variety of attachments from various manufacturers and meets new safety regulations.

Do more.

Safe access

Punched anti-slip plates, handrails and full size guardrails provide safe and easy access to the machine.



HMI

All machine interfaces are ergonomically positioned and designed for optimum control and efficiency.

Advanced hydraulics

New electro-hydraulic system and main control valve use intelligent technology to control on-demand flow for high performance and efficiency.

Quick coupler

The Volvo quick coupler offers maximum versatility, picking up a wide variety of attachments.



Attachments

Volvo's durable attachments have been purpose-built to deliver maximum productivity and long service life in combination with Volvo machines.



Reinforced undercarriage

The undercarriage components are reinforced to ensure long life, high uptime and ultimate durability in tough conditions.

Volvo After Treatment System

The automatic regeneration process takes place without interrupting machine operation, performance or productivity.



Diesel Exhaust Fluid (DEF)

Volvo offers a total DEF solution that is quality assured, cost efficient and easily accessible. Contact your Volvo dealer for more information.

LCD monitor

The new, eight inch LCD monitor clearly displays machine status information for easy operation and increased productivity.



ECO mode

Volvo's unique ECO mode improves fuel efficiency without any loss of performance in most operating conditions.

Service access

Grouped filters are quick and easy to access from ground level via large, wide compartment doors.



Volvo engine

Volvo's D13 Stage IV/Tier 4 Final engine boasts more power while reducing both fuel consumption and emissions and delivering superior quality, reliability and durability.



Single module cooler

The radiator, charged air cooler and hydraulic oil cooler are situated side-by-side on a single layer to maximize efficiency, reduce blockages and aid cleaning.

Adding value to your business.

Being a Volvo customer means having a complete set of services at your fingertips. Volvo can offer you a long-term partnership, protect your revenue and provide a full range of customer solutions using high quality parts, delivered by passionate people. Volvo is committed to the positive return of your investment.



Complete Solutions

Volvo has the right solution for you. So why not let us provide all your needs throughout the whole life cycle of your

machine? By listening to your requirements, we can reduce your total cost of ownership and increase your revenue.



Genuine Volvo Parts

Our attention to detail is what makes us stand out. This proven concept acts as a solid investment in your machine's future. Parts are extensively tested and approved because every part is vital for uptime and performance. Only by using Genuine Volvo Parts, can you be sure that your machine retains the renowned Volvo quality.



Service Network

In order to respond to your needs faster, a Volvo expert is on their way to your job site from one of our Volvo facilities. With our extensive infrastructure of technicians, workshops and dealers, Volvo has a comprehensive network to fully support you using local knowledge and global experience.

The power of CareTrack.

CareTrack is the Volvo Construction Equipment telematics system that gives you access to a wide range of machine monitoring information designed to save you time and money. With CareTrack you can reduce fuel costs, optimize machine and operator performance and pro-actively manage service and maintenance to maximize uptime. Stay connected to your machines via remote monitoring and experience new levels of control and efficiency with CareTrack.

Save time

Pro-actively manage your machines and increase your uptime by planning service and maintenance requirements in advance with CareTrack. The system strengthens the relationship between dealer and customer, helping you to maximize machine availability and avoid potential problems. Through CareTrack it's possible for your local Volvo dealer to troubleshoot faults remotely – minimizing service time.



Save money

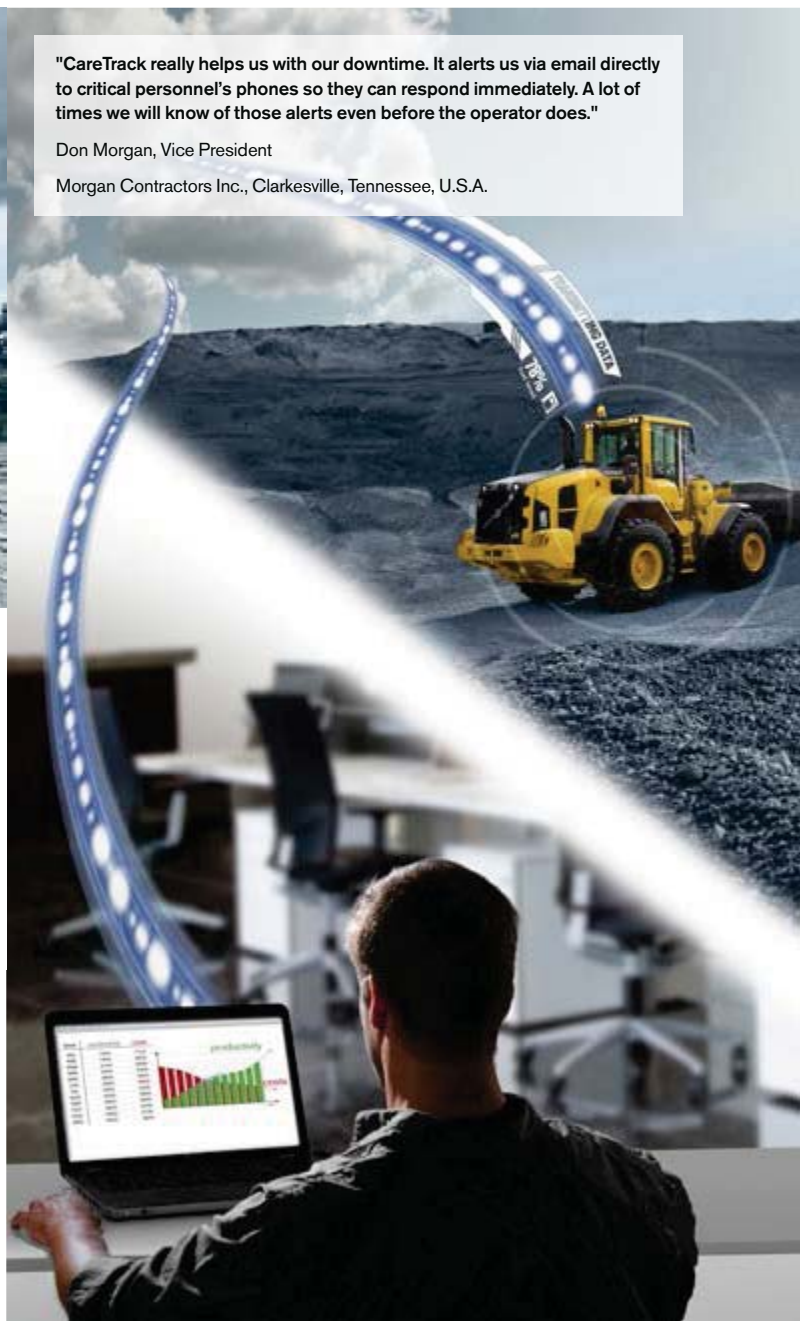
Keeping track of your machines with CareTrack allows you to optimize productivity and save money. Through operational reports you can identify excessive idle time – information that gives you the power to reduce fuel consumption, non-productive machine hours and service costs.



"CareTrack really helps us with our downtime. It alerts us via email directly to critical personnel's phones so they can respond immediately. A lot of times we will know of those alerts even before the operator does."

Don Morgan, Vice President

Morgan Contractors Inc., Clarkesville, Tennessee, U.S.A.



Infinite opportunities

CareTrack presents infinite opportunities to help you get the most out of your machine. From fuel consumption data to location and machine usage reports, the system gives you access to a wealth of information – allowing you to take actions that will have a noticeable impact on your business. Begin by making a few simple changes and then discover specific functionalities to unlock further savings.

Volvo EC480E in detail.

Engine

The latest generation, Volvo engine Tier 4f (Stage IV) emissions compliant diesel engine fully meets the demands of the latest, emissions regulations. Featuring Volvo Advanced Combustion Technology (V-ACT), it is designed to deliver superior performance and fuel efficiency. The engine uses precise, high-pressure fuel injectors, turbo charger and air-to-air intercooler, and electronic engine controls to optimize machine performance.

Air Filter: 3-stage with pre-cleaner.

Automatic Idling System: Reduces engine speed to idle when the levers and pedals are not activated resulting in less fuel consumption and low cab noise levels.

Engine Tier 4f (Stage IV)	Volvo	D13J	
Max power at	r/s / r/min	30 / 1,800	
Net, ISO 9249/SAE J1349	kW / hp	277 / 371	
Gross, ISO 14396/SAE J1995	kW / hp	278 / 372	
Max torque at	Nm / r/min	1 890 / 1 350	1,394
	lb.ft		
No. of cylinders			6
Displacement	l cu.in	12.8	781
Bore	mm in	131	5.16
Stroke	mm in	158	6.22

Electrical system

High-capacity electrical system that is well protected. Waterproof double-lock harness plugs are used to secure corrosion-free connections. The main relays and solenoid valves are shielded to prevent damage. The master switch is standard.

Contronics provides advanced monitoring of machine functions and important diagnostic information.

Voltage	V	24
Batteries	V	2 x 12
Battery capacity	Ah	200
Alternator	V / Ah	28 / 80

Swing system

The swing system uses an axial piston motors, driving a planetary gearbox for maximum torque. An automatic holding brake and anti-rebound valve are standard.

Max. slew speed	r/min	9,3
Max. slew torque	kNm lbf.ft	166.3 122,660

Drive

Each track is powered by an automatic two-speed shift travel motor. The track brakes are multi-disc, spring-applied and hydraulic released. The travel motor, brake and planetary gears are well protected within the track frame.

Max. drawbar pull	kN lb	333.4 74,970
Max. travel speed	km/h mph	3.2/5.2 2.0/3.2
Gradeability	°	35

Undercarriage

The undercarriage has a robust X-shaped frame. Greased and sealed track chains are standard.

Track pads			2 x 52
Link pitch	mm in	215.9	8.5
Shoe width, triple grouser	mm in	600/	24/
		600HD*/	24/
		700/	28/
		800/900	32/36
Shoe width, double grouser	mm in	600	24
Bottom rollers			2 x 9
Top rollers			2 x 2
Top rollers (retractable)			2 x 3

* Not HD shoe but HD track link

Sound Level

Sound level in cab according to ISO 6396		
LpA	dB(A)	71
External sound level according to ISO 6395 and EU Noise Directive (2000/14/EC) and 474-1:2006 +A1:2009		
LwA	dB(A)	106

Hydraulic system

The hydraulic system, also known as the "Automatic Sensing Work Mode," is designed for high-productivity, high-digging capacity, high-maneuvering precision and excellent fuel economy. The summation system, boom, arm and swing priority along with boom and arm regeneration provides optimum performance. The following important functions are included in the system:

Summation system: Combines the flow of both hydraulic pumps to a single function to ensure quick cycle times and high productivity.

Boom priority: Gives priority to the boom operation for faster raising when loading or performing deep excavations.

Arm priority: Gives priority to the arm operation for faster cycle times in leveling and for increased bucket filling when digging.

Swing priority: Gives priority to swing functions for faster simultaneous operations.

Regeneration system: Prevents cavitation and provides flow to other movements during simultaneous operations for maximum productivity.

Power boost: All digging and lifting forces are increased.

Holding valves: Boom and arm holding valves prevent the digging equipment from creeping.

Main pump, Type 2 x variable displacement axial piston pumps

Maximum flow	l/min gpm	2 x 376	2 x 99
--------------	-----------	---------	--------

Pilot pump, Type Gear pump

Maximum flow	l/min gpm	32	8.5
--------------	-----------	----	-----

Hydraulic motors

Travel: Variable displacement axial piston motor with mechanical brake.

Slew: Fixed displacement axial piston motor with mechanical brake

Relief valve setting

Implement	MPa psi	32.4/35.3	4,690/5,120
Travel circuit	MPa psi	32.4	4,699
Slew circuit	MPa psi	25.8	3,740
Pilot circuit	MPa psi	3.9	570

Hydraulic cylinders

Mono boom				2
Bore x Stroke	ø x mm	ø x in	165 x 1 590	6.5 x 62.6
Arm				1
Bore x Stroke	ø x mm	ø x in	190 x 1 850	7.5 x 72.8
Bucket				1
Bore x Stroke	ø x mm	ø x in	165 x 1 335	6.5 x 52.6
ME Bucket				1
Bore x Stroke	ø x mm	ø x in	175 x 1 335	6.9 x 52.6

Service refill capacities

Fuel tank	l gal	680	180
DEF tank	l gal	62.5	16.5
Hydraulic system, total	l gal	525	139
Hydraulic tank	l gal	270	71
Engine oil	l gal	42	11
Engine coolant	l gal	60	16
Slew reduction unit	l gal	2 x 6	2 x 1.6
Travel reduction unit	l gal	2 x 7.5	2 x 2.0

Cab

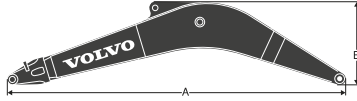
The operator's cab has easy access via a wide door opening. The cab is supported on hydraulic dampening mounts to reduce shock and vibration levels. These along with sound absorbing lining provide low noise levels. The cab has excellent all-round visibility. The front windshield can easily slide up into the ceiling, and the lower front glass can be removed and stored in the side door. Integrated air-conditioning and heating system:

The pressurized and filtered cab air is supplied by an automatically-controlled fan. The air is distributed throughout the cab from 14 vents.

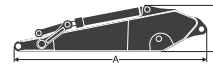
Ergonomic operator's seat: The adjustable seat and joystick console move independently to accommodate the operator. The seat has nine different adjustments plus a seat belt for the operator's comfort and safety.

Dimensions.

Boom



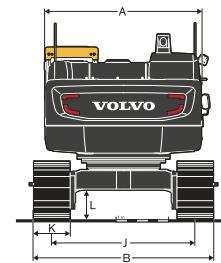
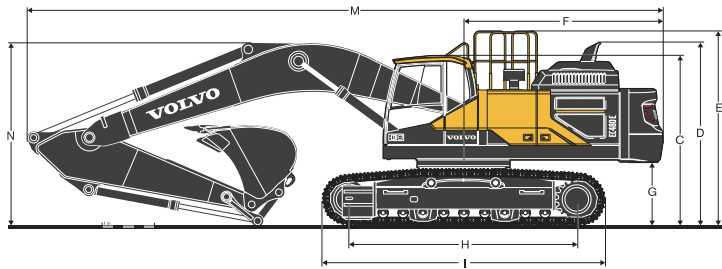
Arm



Description	Unit	6.5 ME	21' 4"	7.0	23' 0"	9.0	30' 0"	Description	Unit	2.55 ME	8' 4"	3.35	11' 0"	3.9	12' 10"	4.8	15' 9"	6.0	19' 8"
Boom	m in	6.5	21' 4"	7.0	23' 0"	9.0	30' 0"	Arm	m in	2.55	8' 4"	3.35	11' 0"	3.9	12' 10"	4.8	15' 9"	6.0	19' 8"
A	mm in	6 750	22' 2"	7 250	23' 9"	9 270	30' 5"	A	mm in	1 235	4' 1"	1 235	4' 1"	1 240	4' 1"	1 250	4' 1"	1 180	3' 10"
B	mm in	2 000	6' 7"	1 840	6' 0"	1 950	6' 5"	B	mm in	600	2' 0"	600	2' 0"	600	2' 0"	600	2' 0"	560	1' 10"
Width	mm in	960	3' 2"	960	3' 2"	960	3' 2"	Width	mm in	600	2' 0"	600	2' 0"	600	2' 0"	600	2' 0"	560	1' 10"
Weight	kg lb	4 370	9,630	4 400	9,710	4 725	10,420	Weight	kg lb	2 415	5,330	2 640	5,820	2 665	5,870	2 940	6,480	2 830	6,230

* Includes arm cylinder, piping and pin

* Includes bucket cylinder, linkage and pin



Description	Unit	EC480E fixed undercarriage											
Boom	m, ft in	6.5 ME, 21' 4"				7.0, 23' 0"				9.0, 30' 0"			
Arm	m, ft in	2.55	8' 4"	2.55	8' 4"	3.35	11' 0"	3.9	12' 10"	4.8	15' 9"	6.0	19' 8"
A. Overall width of upper structure	mm ft in	2 990	9' 10"	2 990	9' 10"	2 990	9' 10"	2 990	9' 10"	2 990	9' 10"	2 990	9' 10"
B. Overall width (retracted)	mm ft in	-	-	-	-	-	-	-	-	-	-	-	-
Overall width (extended)	mm ft in	3 640	11' 11"	3 640	11' 11"	3 640	11' 11"	3 640	11' 11"	3 640	11' 11"	3 640	11' 11"
C. Overall height of cab	mm ft in	3 282	10' 9"	3 282	10' 9"	3 282	10' 9"	3 282	10' 9"	3 282	10' 9"	3 282	10' 9"
D. Overall height of diffuser	mm ft in	3 525	11' 7"	3 525	11' 7"	3 525	11' 7"	3 525	11' 7"	3 525	11' 7"	3 525	11' 7"
E. Overall height of guard rail	mm ft in	3 747	12' 4"	3 747	12' 4"	3 747	12' 4"	3 747	12' 4"	3 747	12' 4"	3 747	12' 4"
F. Tail swing radius (Counterweight >9 050 Kg (19,960 lb))	mm ft in	3 800	12' 6"	3 800	12' 6"	3 800	12' 6"	3 800	12' 6"	3 800	12' 6"	-	-
Tail swing radius (Counterweight <9 750 Kg (21,500 lb))	mm ft in	3 880	12' 9"	3 880	12' 9"	3 880	12' 9"	3 880	12' 9"	3 880	12' 9"	3 880	12' 9"
G. Counterweight clearance*	mm ft in	1 211	4' 0"	1 211	4' 0"	1 211	4' 0"	1 211	4' 0"	1 211	4' 0"	1 211	4' 0"
Removal Counterweight clearance*	mm ft in	1 207	4' 0"	1 207	4' 0"	1 207	4' 0"	1 207	4' 0"	1 207	4' 0"	1 207	4' 0"
H. Tumbler length	mm ft in	4 370	14' 4"	4 370	14' 4"	4 370	14' 4"	4 370	14' 4"	4 370	14' 4"	4 370	14' 4"
I. Track length	mm ft in	5 370	17' 7"	5 370	17' 7"	5 370	17' 7"	5 370	17' 7"	5 370	17' 7"	5 370	17' 7"
J. Track gauge (retracted)	mm ft in	-	-	-	-	-	-	-	-	-	-	-	-
Track gauge (extended)	mm ft in	2 740	9' 0"	2 740	9' 0"	2 740	9' 0"	2 740	9' 0"	2 740	9' 0"	2 740	9' 0"
K. Shoe width	mm ft in	900	36"	900	36"	900	36"	900	36"	900	36"	900	36"
L. Min. ground clearance*	mm ft in	515	1' 8"	515	1' 8"	515	1' 8"	515	1' 8"	515	1' 8"	515	1' 8"
M. Overall length (Counterweight >9 050 Kg (19,960 lb))	mm ft in	11 614	38' 1"	12 114	39' 9"	12 134	39' 10"	12 130	39' 10"	12 014	39' 5"	-	-
Overall length (Counterweight <9 750 Kg (21,500 lb))	mm ft in	11 694	38' 4"	12 194	40' 0"	12 214	40' 1"	12 210	40' 1"	12 094	39' 8"	13 708	45' 0"
N. Overall height of boom	mm ft in	4 010	13' 2"	3 850	12' 8"	3 537	11' 7"	3 565	11' 8"	4 572	15' 0"	5 600	18' 4"

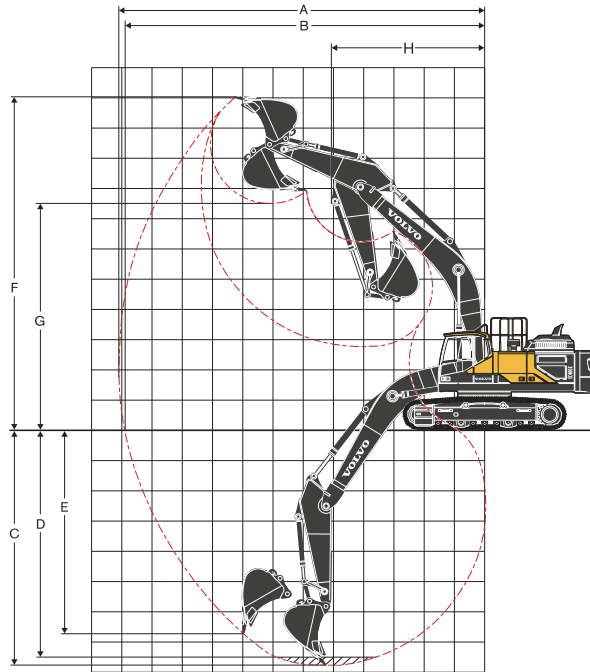
*Without shoe grouser

Description	Unit	EC480E retractable undercarriage											
Boom	m, ft in	6.5 ME, 21' 4"				7.0, 23' 0"				9.0, 30' 0"			
Arm	m, ft in	2.55	8' 4"	2.55	8' 4"	3.35	11' 0"	3.9	12' 10"	4.8	15' 9"	6.0	19' 8"
A. Overall width of upper structure	mm ft in	2 990	9' 10"	2 990	9' 10"	2 990	9' 10"	2 990	9' 10"	2 990	9' 10"	2 990	9' 10"
B. Overall width (retracted)	mm ft in	3 290	10' 10"	3 290	10' 10"	3 290	10' 10"	3 290	10' 10"	3 290	10' 10"	3 290	10' 10"
Overall width (extended)	mm ft in	3 790	12' 5"	3 790	12' 5"	3 790	12' 5"	3 790	12' 5"	3 790	12' 5"	3 790	12' 5"
C. Overall height of cab	mm ft in	3 392	11' 2"	3 392	11' 2"	3 392	11' 2"	3 392	11' 2"	3 392	11' 2"	3 392	11' 2"
D. Overall height of diffuser	mm ft in	3 650	12' 0"	3 650	12' 0"	3 650	12' 0"	3 650	12' 0"	3 650	12' 0"	3 650	12' 0"
E. Overall height of guard rail	mm ft in	3 857	12' 8"	3 857	12' 8"	3 857	12' 8"	3 857	12' 8"	3 857	12' 8"	3 857	12' 8"
F. Tail swing radius (Counterweight >9 050 Kg (19,960 lb))	mm ft in	3 800	12' 6"	3 800	12' 6"	3 800	12' 6"	3 800	12' 6"	3 800	12' 6"	-	-
Tail swing radius (Counterweight <9 750 Kg (21,500 lb))	mm ft in	3 880	12' 9"	3 880	12' 9"	3 880	12' 9"	3 880	12' 9"	3 880	12' 9"	3 880	12' 9"
G. Counterweight clearance*	mm ft in	1 321	4' 4"	1 321	4' 4"	1 321	4' 4"	1 321	4' 4"	1 321	4' 4"	1 321	4' 4"
Removal Counterweight clearance*	mm ft in	1 317	4' 4"	1 317	4' 4"	1 317	4' 4"	1 317	4' 4"	1 317	4' 4"	1 317	4' 4"
H. Tumbler length	mm ft in	4 370	14' 4"	4 370	14' 4"	4 370	14' 4"	4 370	14' 4"	4 370	14' 4"	4 370	14' 4"
I. Track length	mm ft in	5 370	17' 7"	5 370	17' 7"	5 370	17' 7"	5 370	17' 7"	5 370	17' 7"	5 370	17' 7"
J. Track gauge (retracted)	mm ft in	2 390	7' 10"	2 390	7' 10"	2 390	7' 10"	2 390	7' 10"	2 390	7' 10"	2 390	7' 10"
Track gauge (extended)	mm ft in	2 890	9' 6"	2 890	9' 6"	2 890	9' 6"	2 890	9' 6"	2 890	9' 6"	2 890	9' 6"
K. Shoe width	mm ft in	900	36"	900	36"	900	36"	900	36"	900	36"	900	36"
L. Min. ground clearance *	mm ft in	710	2' 4"	710	2' 4"	710	2' 4"	710	2' 4"	710	2' 4"	710	2' 4"
M. Overall length (Counterweight >9 050 Kg (19,960 lb))	mm ft in	11 615	38' 1"	12 116	39' 9"	12 115	39' 9"	12 107	39' 9"	12 066	39' 7"	-	-
Overall length (Counterweight <9 750 Kg (21,500 lb))	mm ft in	11 695	38' 4"	12 196	40' 0"	12 195	40' 0"	12 187	40' 0"	12 146	39' 10"	13 776	45' 2"
N. Overall height of boom	mm ft in	4 041	13' 3"	3 877	12' 9"	3 570	11' 9"	3 580	11' 9"	4 561	15' 0"	5 492	18' 0"

*Without shoe grouser

Specifications.

WORKING RANGE



Description	Unit	EC480E*												
		6.5 ME, 21' 4"				7.0, 23' 0"				9.0, 30' 0"				
Boom	m, ft in	2.55	8' 4"	2.55	8' 4"	3.35	11' 0"	3.9	12' 10"	4.8	15' 9"	6.0	19' 8"	
A. Max. digging reach	mm ft in	10 934	35' 10"	11 453	37' 7"	12 146	39' 10"	12 645	41' 6"	13 366	43' 10"	16 456	54' 0"	
B. Max. digging reach on ground	mm ft in	10 690	35' 1"	11 221	36' 10"	11 927	39' 2"	12 434	40' 10"	13 168	43' 2"	16 296	53' 6"	
C. Max. digging depth	mm ft in	6 586	21' 7"	7 028	23' 1"	7 828	25' 8"	8 378	27' 6"	9 278	30' 5"	11 865	38' 11"	
D. Max. digging depth (2.44 m/8' level)	mm ft in	6 418	21' 1"	6 860	22' 6"	7 686	25' 3"	8 250	27' 1"	9 167	30' 1"	11 767	38' 7"	
E. Max. vertical wall digging depth	mm ft in	5 769	18' 11"	6 242	20' 6"	6 774	22' 3"	7 214	23' 8"	7 625	25' 0"	11 204	36' 9"	
F. Max. cutting height	mm ft in	10 584	34' 9"	10 910	35' 10"	11 064	36' 4"	11 234	36' 10"	11 168	36' 8"	13 753	45' 1"	
G. Max. dumping height	mm ft in	6 957	22' 10"	7 310	24' 0"	7 526	24' 8"	7 713	25' 4"	7 744	25' 5"	10 702	35' 1"	
H. Min. front slew radius	mm ft in	4 758	15' 7"	5 040	16' 6"	5 088	16' 8"	5 050	16' 7"	5 100	16' 9"	6 492	21' 4"	
Digging forces with direct fit bucket														
Bucket radius	mm ft in	1 923	6' 4"	1 810	5' 11"	1 810	5' 11"	1 810	5' 11"	1 810	5' 11"	1 598	5' 3"	
Breakout force - bucket (Normal/Power boost)	SAE J1179	kN lb	253	56,854	230	51,616	230	51,616	230	51,616	230	51,616	163	36,666
	SAE J1179	kN lb	275	61,889	251	56,472	251	56,472	251	56,472	251	56,472	178	40,000
	ISO 6015	kN lb	285	64,093	261	58,652	261	58,652	261	58,652	261	58,652	183	41,145
	ISO 6015	kN lb	311	69,825	284	63,935	284	63,935	284	63,935	284	63,935	200	44,886
Tearout force - dipper arm (Normal/Power boost)	SAE J1179	kN lb	225	50,469	232	52,065	196	44,085	176	39,543	160	35,901	130	29,230
	SAE J1179	kN lb	244	54,875	252	56,696	215	48,311	192	43,073	174	39,206	142	31,888
	ISO 6015	kN lb	232	52,065	239	53,639	201	45,231	179	40,240	163	36,598	132	29,644
ISO 6015	kN lb	253	56,899	260	58,495	220	49,435	196	43,972	178	39,903	144	32,339	
Rotation angle, bucket	°	169	169	183	183	183	183	183	183	183	183	177	177	

Description	Unit	EC480E, mechanically retractable width**												
		6.5 ME, 21' 4"				7.0, 23' 0"				9.0, 30' 0"				
Boom	m, ft in	2.55	8' 4"	2.55	8' 4"	3.35	11' 0"	3.9	12' 10"	4.8	15' 9"	6.0	19' 8"	
A. Max. digging reach	mm ft in	10 934	35' 10"	11 453	37' 7"	12 146	39' 10"	12 644	41' 6"	13 366	43' 10"	16 456	54' 0"	
B. Max. digging reach on ground	mm ft in	10 665	35' 0"	11 197	36' 9"	11 905	39' 1"	12 413	40' 9"	13 148	43' 2"	16 280	53' 5"	
C. Max. digging depth	mm ft in	6 476	21' 3"	6 918	22' 8"	7 718	25' 4"	8 268	27' 2"	9 168	30' 1"	11 755	38' 7"	
D. Max. digging depth (2.44 m/8' level)	mm ft in	3 608	11' 10"	6 750	22' 2"	7 576	24' 10"	8 139	26' 8"	9 057	29' 9"	11 657	38' 3"	
E. Max. vertical wall digging depth	mm ft in	5 659	18' 7"	6 132	20' 1"	6 664	21' 10"	7 104	23' 4"	7 515	24' 8"	11 094	36' 5"	
F. Max. cutting height	mm ft in	10 694	35' 1"	11 021	36' 2"	11 174	36' 8"	11 344	37' 3"	11 278	37' 0"	13 863	45' 6"	
G. Max. dumping height	mm ft in	7 067	23' 2"	7 420	24' 4"	7 636	25' 1"	7 823	25' 8"	7 854	25' 9"	10 812	35' 8"	
H. Min. front slew radius	mm ft in	4 757	15' 7"	5 043	16' 7"	5 088	16' 8"	5 050	16' 7"	5 100	16' 9"	6 610	21' 8"	
Digging forces with direct fit bucket														
Bucket radius	mm ft in	1 923	6' 4"	1 810	5' 11"	1 810	5' 11"	1 810	5' 11"	1 810	5' 11"	1 598	5' 3"	
Breakout force - bucket (Normal/Power boost)	SAE J1179	kN lb	253	56,854	230	51,616	230	51,616	230	51,616	230	51,616	163	36,666
	SAE J1179	kN lb	275	61,889	251	56,472	251	56,472	251	56,472	251	56,472	178	40,000
	ISO 6015	kN lb	285	64,093	261	58,652	261	58,652	261	58,652	261	58,652	183	41,145
	ISO 6015	kN lb	311	69,825	284	63,935	284	63,935	284	63,935	284	63,935	200	44,886
Tearout force - dipper arm (Normal/Power boost)	SAE J1179	kN lb	225	50,469	232	52,065	196	44,085	176	39,543	160	35,901	130	29,230
	SAE J1179	kN lb	244	54,875	252	56,696	215	48,311	192	43,073	174	39,206	142	31,888
	ISO 6015	kN lb	232	52,065	239	53,639	201	45,231	179	40,240	163	36,598	132	29,644
ISO 6015	kN lb	253	56,899	260	58,495	220	49,435	196	43,972	178	39,903	144	32,339	
Rotation angle, bucket	°	169	169	183	183	183	183	183	183	183	183	177	177	

* FIXED UNDERCARRIAGE, Machine with pin-on bucket

** RETRACTABLE UNDERCARRIAGE, Machine with pin-on bucket

GROUND PRESSURE

EC480E		with FIXED undercarriage												
	mm	in	kg	lb	kPa	psi	kg	lb	kPa	psi	kg	lb	kPa	psi
Triple grouser	600	24	46 566	102,680	84.9	12.3	47 302	104,300	86.3	12.5	47 866	105,540	87.3	12.7
	700	28	47 068	103,780	73.6	10.7	47 804	105,410	74.7	10.8	48 368	106,650	75.6	11.0
	800	32	47 577	104,910	65.1	9.4	48 313	106,530	66.1	9.6	48 877	107,770	66.9	9.7
	900	36	48 081	106,020	58.5	8.5	48 817	107,640	59.4	8.6	49 381	108,890	60.0	8.7
Triple grouser(HD)	600	24	46 680	102,930	85.1	12.3	47 416	104,550	86.5	12.5	47 980	105,800	87.5	12.7
Double grouser	600	24	46 618	102,790	85.0	12.3	47 354	104,420	86.4	12.5	47 918	105,660	87.4	12.7
			EC480E with FIXED undercarriage, 7.0 m (23') boom, 3.35 m (11') arm, 2 200 kg (4,850 lb) bucket, 8 450 kg (18,630 lb) counterweight				EC480E with FIXED undercarriage, 7.0 m (23') boom, 3.35 m (11') arm, 2 237 kg (5,150 lb) bucket, 9 050 kg (19,960 lb) counterweight				EC480E with FIXED undercarriage, 7.0 m (23') boom, 3.35 m (11') arm, 2 200 kg (4,850 lb) bucket, 9 750 kg (21,500 lb) counterweight			
EC480E		EC480EL with RETRACTABLE undercarriage												
	mm	in	kg	lb	kPa	psi	kg	lb	kPa	psi	kg	lb	kPa	psi
Triple grouser	600	24	47 615	104,990	86.8	12.6	48 352	106,620	88.2	12.8	48 915	107,860	89.2	12.9
	700	28	48 117	106,100	75.2	10.9	48 854	107,720	76.4	11.1	49 417	108,960	77.3	11.2
	800	32	48 619	107,200	66.5	9.6	49 356	108,830	67.5	9.8	49 919	110,070	68.3	9.9
	900	36	49 121	108,310	59.7	8.7	49 858	109,940	60.6	8.8	50 421	111,180	61.3	8.9
Triple grouser(HD)	600	24	47 729	105,240	87.1	12.6	48 466	106,870	88.4	12.8	49 029	108,110	89.4	13.0
Double grouser	600	24	47 667	105,110	86.9	12.6	48 404	106,730	88.3	12.8	48 967	107,970	89.3	12.9
			EC480E with RETRACTABLE undercarriage, 7.0 m (23') boom, 3.35 m (11') arm, 2 200 kg (4,850 lb) bucket, 8 450 kg (18,630 lb) counterweight				EC480E with RETRACTABLE undercarriage, 7.0 m (23') boom, 3.35 m (11') arm, 2 237 kg (5,150 lb) bucket, 9 050 kg (19,960 lb) counterweight				EC480E with RETRACTABLE undercarriage, 7.0 m (23') boom, 3.35 m (11') arm, 2 200 kg (4,850 lb) bucket, 9 750 kg (21,500 lb) counterweight			
EC480E		with FIXED undercarriage						with RETRACTABLE undercarriage						
	mm	in	kg	lb	kPa	psi	kg	lb	kPa	psi	kg	lb	kPa	psi
Triple grouser	600	24	48 299	106,500	88.1	12.8	49 348	108,810	90.0	13.0				
	700	28	48 801	107,610	76.3	11.1	49 850	109,920	77.9	11.3				
	800	32	49 310	108,730	67.5	9.8	50 352	111,030	68.9	10.0				
	900	36	49 814	109,840	60.6	8.8	50 854	112,130	61.8	9.0				
Triple grouser(HD)	600	24	48 351	106,610	88.2	12.8	49 400	108,930	90.1	13.1				
			EC480E LR with FIXED undercarriage, 9 m (29' 6") boom, 6 m (19' 8") arm, 1 162 kg (2,560 lb) bucket, 10 300 kg (22,710 lb) counterweight				EC480E LR with RETRACTABLE undercarriage, 9 m (29' 6") boom, 6 m (19' 8") arm, 1 162 kg (2,560 lb) bucket, 10 300 kg (22,710 lb) counterweight							

BUCKET SELECTION GUIDE

Bucket type	Capacity	Cutting width	Weight	Teeth	EC480EL fixed undercarriage								
					6.5 m (21' 4") ME Boom			7.0 m (23') Boom					
					900 mm (36") shoe, 8 450 kg (18,630 lb) counterweight								
	m ³	yd ³	mm	ft/in	kg	lb	EA	ME 2.55 m (8' 4")	2.55 m (8' 4")	3.35 m (11' 0")	3.9 m (12' 10")	4.8 m (15' 9")	
Direct fit Buckets	General purpose	1.2	2	850	33	1 627	3,589	3	C	C	C	C	C
		1.3	2	1 050	41	1 681	3,706	3	C	C	C	C	C
		1.6	2	1 200	47	1 869	4,122	4	C	C	C	C	C
		1.8	2	1 350	53	2 051	4,522	5	C	C	C	C	C
		2.1	3	1 500	59	2 192	4,833	5	C	C	C	C	B
		2.7	3	1 800	70	2 456	5,416	5	C	C	B	B	X
	Heavy duty	1.2	2	850	33	1 730	3,814	3	D	D	D	D	D
		1.2	2	850	33	1 717	3,786	3	D	D	D	D	D
		2.1	3	1 500	59	2 333	5,144	5	D	D	D	C	B
		2.1	3	1 500	59	2 308	5,088	5	D	D	D	C	B
		2.4	3	1 650	64	2 470	5,446	5	D	D	C	B	A
		2.4	3	1 650	64	2 444	5,389	5	D	D	C	B	A
		2.7	3	1 800	70	2 623	5,783	5	D	C	B	A	X
Bucket type	Capacity	Cutting width	Weight	Teeth	EC480EL retractable undercarriage								
					6.5 m (21' 4") ME Boom			7.0 m (23' 0") Boom					
					900 mm (36") shoe, 8 450 kg (18,630 lb) counterweight								
	m ³	yd ³	mm	ft/in	kg	lb	EA	ME 2.55 m (8' 4")	2.55 m (8' 4")	3.35 m (11' 0")	3.9 m (12' 10")	4.8 m (15' 9")	
Direct fit Buckets	General purpose	1.2	2	850	33	1 627	3 589	3	C	C	C	C	C
		1.3	2	1 050	41	1 681	3 706	3	C	C	C	C	C
		1.6	2	1 200	47	1 869	4 122	4	C	C	C	C	C
		1.8	2	1 350	53	2 051	4 522	5	C	C	C	C	C
		2.1	3	1 500	59	2 192	4 833	5	C	C	C	C	C
		2.7	3	1 800	70	2 456	5 416	5	C	C	C	B	A
	Heavy duty	1.2	2	850	33	1 730	3 814	3	D	D	D	D	D
		1.2	2	850	33	1 717	3 786	3	D	D	D	D	D
		2.1	3	1 500	59	2 333	5 144	5	D	D	D	D	C
		2.1	3	1 500	59	2 308	5 088	5	D	D	D	D	C
		2.4	3	1 650	64	2 470	5 446	5	D	D	C	B	A
		2.4	3	1 650	64	2 444	5 389	5	D	D	C	B	A
		2.7	3	1 800	70	2 623	5 783	5	D	D	C	B	A

X : Not recommended

Maximum material density

	kg/m ³	lb/yd ³	
A	1 200 - 1 300	2,000 - 2,200	Coal, Caliche, Shale
B	1 400 - 1 600	2,300 - 2,700	Wet earth and clay, Limestone, Sandstone
C	1 700 - 1 800	2,800 - 3,100	Granite, Wet sand, Well blasted rock
D	> 1 900	> 3,200	Wet mud, Iron ore

Please consult with your Volvo dealer for the proper match of buckets and attachments to suit the application.

The recommendations are given as a guide only, based on typical operation conditions.

Bucket capacity based on ISO 7451, heaped material with a 1:1 angle of repose.

Specifications.

LIFTING CAPACITY EC480EL fixed undercarriage

Lifting capacity at the arm end without bucket.

For lifting capacity including bucket, simply subtract actual weight of the direct fit bucket or the bucket with quick coupler from the following values.

	Lifting hook related to ground level	1.5 m (5 ft)		3.0 m (10 ft)		4.5 m (15 ft)		6.0 m (20 ft)		7.5 m (25 ft)		9.0 m (30 ft)		10.5 m (35 ft)		Max. reach			
		Along UC	Across UC	Along UC	Across UC	Along UC	Across UC	Along UC	Across UC	Along UC	Across UC	Along UC	Across UC	Along UC	Across UC	Front	Side	Max.	
Boom:	7.5 m kg	-	-	-	-	-	-	-	-	-	-	-	-	-	-	-	-	-	-
6.5 m (21' 4")	25 ft lb	-	-	-	-	-	-	-	-	-	-	-	-	-	-	-	-	-	-
Arm:	6 m kg	-	-	-	-	-	-	-	-	-	-	-	-	-	-	-	-	-	-
2.5 m (8' 4")	20 ft lb	-	-	-	-	-	-	-	-	-	-	-	-	-	-	-	-	-	-
Shoe:	4.5 m kg	-	-	-	-	-	-	-	-	-	-	-	-	-	-	-	-	-	-
900 mm (36")	15 ft lb	-	-	-	-	-	-	-	-	-	-	-	-	-	-	-	-	-	-
CWT:	3 m kg	-	-	-	-	-	-	-	-	-	-	-	-	-	-	-	-	-	-
8 450 kg (18,630 lb)	10 ft lb	-	-	-	-	-	-	-	-	-	-	-	-	-	-	-	-	-	-
	1.5 m kg	-	-	-	-	-	-	-	-	-	-	-	-	-	-	-	-	-	-
	5 ft lb	-	-	-	-	-	-	-	-	-	-	-	-	-	-	-	-	-	-
	0 m kg	-	-	-	-	-	-	-	-	-	-	-	-	-	-	-	-	-	-
	0 ft lb	-	-	-	-	-	-	-	-	-	-	-	-	-	-	-	-	-	-
	-1.5 m kg	-	-	-	-	-	-	-	-	-	-	-	-	-	-	-	-	-	-
	-5 ft lb	-	-	-	-	-	-	-	-	-	-	-	-	-	-	-	-	-	-
	-3 m kg	-	-	-	-	-	-	-	-	-	-	-	-	-	-	-	-	-	-
	-10 ft lb	-	-	-	-	-	-	-	-	-	-	-	-	-	-	-	-	-	-
	-4.5 m kg	-	-	-	-	-	-	-	-	-	-	-	-	-	-	-	-	-	-
	-15 ft lb	-	-	-	-	-	-	-	-	-	-	-	-	-	-	-	-	-	-
Boom:	9.0 m kg	-	-	-	-	-	-	-	-	-	-	-	-	-	-	-	-	-	-
7.0 m (23' 0")	30 ft lb	-	-	-	-	-	-	-	-	-	-	-	-	-	-	-	-	-	-
Arm:	7.5 m kg	-	-	-	-	-	-	-	-	-	-	-	-	-	-	-	-	-	-
2.55 m (8' 4")	25 ft lb	-	-	-	-	-	-	-	-	-	-	-	-	-	-	-	-	-	-
Shoe:	6 m kg	-	-	-	-	-	-	-	-	-	-	-	-	-	-	-	-	-	-
900 mm (36")	20 ft lb	-	-	-	-	-	-	-	-	-	-	-	-	-	-	-	-	-	-
CWT:	4.5 m kg	-	-	-	-	-	-	-	-	-	-	-	-	-	-	-	-	-	-
8 450 kg (18,630 lb)	15 ft lb	-	-	-	-	-	-	-	-	-	-	-	-	-	-	-	-	-	-
	3 m kg	-	-	-	-	-	-	-	-	-	-	-	-	-	-	-	-	-	-
	10 ft lb	-	-	-	-	-	-	-	-	-	-	-	-	-	-	-	-	-	-
	1.5 m kg	-	-	-	-	-	-	-	-	-	-	-	-	-	-	-	-	-	-
	5 ft lb	-	-	-	-	-	-	-	-	-	-	-	-	-	-	-	-	-	-
	0 m kg	-	-	-	-	-	-	-	-	-	-	-	-	-	-	-	-	-	-
	0 ft lb	-	-	-	-	-	-	-	-	-	-	-	-	-	-	-	-	-	-
	-1.5 m kg	-	-	-	-	-	-	-	-	-	-	-	-	-	-	-	-	-	-
	-5 ft lb	-	-	-	-	-	-	-	-	-	-	-	-	-	-	-	-	-	-
	-3 m kg	-	-	-	-	-	-	-	-	-	-	-	-	-	-	-	-	-	-
	-10 ft lb	-	-	-	-	-	-	-	-	-	-	-	-	-	-	-	-	-	-
	-4.5 m kg	-	-	-	-	-	-	-	-	-	-	-	-	-	-	-	-	-	-
	-15 ft lb	-	-	-	-	-	-	-	-	-	-	-	-	-	-	-	-	-	-
Boom:	9.0 m kg	-	-	-	-	-	-	-	-	-	-	-	-	-	-	-	-	-	-
7.0 m (23' 0")	30 ft lb	-	-	-	-	-	-	-	-	-	-	-	-	-	-	-	-	-	-
Arm:	7.5 m kg	-	-	-	-	-	-	-	-	-	-	-	-	-	-	-	-	-	-
3.35 m (11' 0")	25 ft lb	-	-	-	-	-	-	-	-	-	-	-	-	-	-	-	-	-	-
Shoe:	6 m kg	-	-	-	-	-	-	-	-	-	-	-	-	-	-	-	-	-	-
900 mm (36")	20 ft lb	-	-	-	-	-	-	-	-	-	-	-	-	-	-	-	-	-	-
CWT:	4.5 m kg	-	-	-	-	-	-	-	-	-	-	-	-	-	-	-	-	-	-
8 450 kg (18,630 lb)	15 ft lb	-	-	-	-	-	-	-	-	-	-	-	-	-	-	-	-	-	-
	3 m kg	-	-	-	-	-	-	-	-	-	-	-	-	-	-	-	-	-	-
	10 ft lb	-	-	-	-	-	-	-	-	-	-	-	-	-	-	-	-	-	-
	1.5 m kg	-	-	-	-	-	-	-	-	-	-	-	-	-	-	-	-	-	-
	5 ft lb	-	-	-	-	-	-	-	-	-	-	-	-	-	-	-	-	-	-
	0 m kg	-	-	-	-	-	-	-	-	-	-	-	-	-	-	-	-	-	-
	0 ft lb	-	-	-	-	-	-	-	-	-	-	-	-	-	-	-	-	-	-
	-1.5 m kg	-	-	-	-	-	-	-	-	-	-	-	-	-	-	-	-	-	-
	-5 ft lb	-	-	-	-	-	-	-	-	-	-	-	-	-	-	-	-	-	-
	-3 m kg	-	-	-	-	-	-	-	-	-	-	-	-	-	-	-	-	-	-
	-10 ft lb	-	-	-	-	-	-	-	-	-	-	-	-	-	-	-	-	-	-
	-4.5 m kg	-	-	-	-	-	-	-	-	-	-	-	-	-	-	-	-	-	-
	-15 ft lb	-	-	-	-	-	-	-	-	-	-	-	-	-	-	-	-	-	-
Boom:	9 m kg	-	-	-	-	-	-	-	-	-	-	-	-	-	-	-	-	-	-
7.0 m (23' 0")	30 ft lb	-	-	-	-	-	-	-	-	-	-	-	-	-	-	-	-	-	-
Arm:	7.5 m kg	-	-	-	-	-	-	-	-	-	-	-	-	-	-	-	-	-	-
3.9 m (12' 10")	25 ft lb	-	-	-	-	-	-	-	-	-	-	-	-	-	-	-	-	-	-
Shoe:	6 m kg	-	-	-	-	-	-	-	-	-	-	-	-	-	-	-	-	-	-
900 mm (36")	20 ft lb	-	-	-	-	-	-	-	-	-	-	-	-	-	-	-	-	-	-
CWT:	4.5 m kg	-	-	-	-	-	-	-	-	-	-	-	-	-	-	-	-	-	-
8 450 kg (18,630 lb)	15 ft lb	-	-	-	-	-	-	-	-	-	-	-	-	-	-	-	-	-	-
	3 m kg	-	-	-	-	-	-	-	-	-	-	-	-	-	-	-	-	-	-
	10 ft lb	-	-	-	-	-	-	-	-	-	-	-	-	-	-	-	-	-	-
	1.5 m kg	-	-	-	-	-	-	-	-	-	-	-	-	-	-	-	-	-	-
	5 ft lb	-	-	-	-	-	-	-	-	-	-	-	-	-	-	-	-	-	-
	0 m kg	-	-	-	-	-	-	-	-	-	-	-	-	-	-	-	-	-	-
	0 ft lb	-	-	-	-	-	-	-	-	-	-	-	-	-	-	-	-	-	-
	-1.5 m kg	-	-	-	-	-	-	-	-	-	-	-	-	-	-	-	-	-	-
	-5 ft lb	-	-	-	-	-	-	-	-	-	-	-	-	-	-	-	-	-	-
	-3 m kg	-	-	-	-	-	-	-	-	-	-	-	-	-	-	-	-	-	-
	-10 ft lb	-	-	-	-	-	-	-	-	-	-	-	-	-	-	-	-	-	-
	-4.5 m kg	-	-	-	-	-	-	-	-	-	-	-	-	-	-	-	-	-	-
	-15 ft lb	-	-	-	-	-	-	-	-	-	-	-	-	-	-	-	-	-	-
	-6 m kg	-	-	-	-	-	-	-	-	-	-	-	-	-	-	-	-	-	-
	-20 ft lb	-	-	-	-	-	-	-	-	-	-	-	-	-	-	-	-	-	-

Notes: 1. Machine in "Fine Mode-F" (Power Boost) for lifting capacities. 2. The above loads are in compliance with SAE J1097 and ISO 10567 Hydraulic Excavator Lifting Capacity Standards. 3. Rated loads do not exceed 87% of hydraulic lifting capacity or 75% of tipping load. 4. Rated loads marked with an asterisk (*) are limited by hydraulic capacity rather than tipping load.

LIFTING CAPACITY EC480EL fixed undercarriage

Lifting capacity at the arm end without bucket.

For lifting capacity including bucket, simply subtract actual weight of the direct fit bucket or the bucket with quick coupler from the following values.

	Lifting hook related to ground level	1.5 m (5 ft)		3.0 m (10 ft)		4.5 m (15 ft)		6.0 m (20 ft)		7.5 m (25 ft)		9.0 m (30 ft)		10.5 m (35 ft)		Max. reach			
		Along UC	Across UC	Along UC	Across UC	Along UC	Across UC	Along UC	Across UC	Along UC	Across UC	Along UC	Across UC	Along UC	Across UC	Front	Side	Max.	
Boom:	9 m kg	-	-	-	-	-	-	-	-	-	-	-	-	-	-	-	-	-	-
7.0 m (23' 0")	30 ft lb	-	-	-	-	-	-	-	-	-	-	-	-	-	-	-	-	-	-
Arm:	7.5 m kg	-	-	-	-	-	-	-	-	-	-	-	-	-	-	-	-	-	-
4.8 m (15' 9")	25 ft lb	-	-	-	-	-	-	-	-	-	-	-	-	-	-	-	-	-	-
Shoe:	6 m kg	-	-	-	-	-	-	-	-	-	-	-	-	-	-	-	-	-	-
900 mm (36")	20 ft lb	-	-	-	-	-	-	-	-	-	-	-	-	-	-	-	-	-	-
CWT:	4.5 m kg	-	-	-	-	-	-	-	-	-	-	-	-	-	-	-	-	-	-
8 450 kg (18,630 lb)	15 ft lb	-	-	-	-	-	-	-	-	-	-	-	-	-	-	-	-	-	-
	3 m kg	-	-	-	-	-	-	-	-	-	-	-	-	-	-	-	-	-	-
	10 ft lb	-	-	-	-	-	-	-	-	-	-	-	-	-	-	-	-	-	-
	1.5 m kg	-	-	-	-	-	-	-	-	-	-	-	-	-	-	-	-	-	-
	5 ft lb	-	-	-	-	-	-	-	-	-	-	-	-	-	-	-	-	-	-
	0 m kg	-	-	-	-	-	-	-	-	-	-	-	-	-	-	-	-	-	-
	0 ft lb	-	-	-	-	-	-	-	-	-	-	-	-	-	-	-	-	-	-
	-1.5 m kg	9 300	9 300	13 830	13 830	25 250	17 850	18 260	11 670	14 250	8 530	10 970	6 600	8 780	5 310	8 490	5 140	10.8 m	37.3 ft
	-5 ft lb	20,760	20,760	31,210	31,210	54,700	38,400	39,570	25,150	30,900	18,390	23,630	14,230	18,930	11,460	18,750	11,350	35.3 ft	114.6 ft
	-3 m kg	14 260	14 260	19 340	19 340	24 960	17 790	18 420	11 540	14 260	8 420	10 910	6 540	-	-	9 300	5 620	10.1 m	33.0 ft
	-10 ft lb	31,910	31,910	43,650	43,650	54,080	38,270	39,910	24,870	30,700	18,150	23,510	14,130	-	-	20,580	12,450	33.0 ft	114.6 ft
	-4.5 m kg	19 970	19 970	26 530	26 530	23 480	18 000	17 630	11 620	13 820	8 470	10 870	6 650	-	-	10 600	6 530	9.1 m	29.9 ft
	-15 ft lb	44,860	44,860	60,120	60,120	50,760	38,730	38,100	25,050	29,780	18,300	23,960	14,660	-	-	23,430	14,530	29.8 ft	97.8 ft
	-6 m kg	-	-	-	-	-	-	-	-	-	-	-	-	-	-	-	-	-	-
	-20 ft lb	-	-	-	-	-	-	-	-	-	-	-	-	-	-	-	-	-	-
	9 m kg	-	-	61,480	61,480	43,870	39,790	33,120	25,760	24,670	19,000	-	-	-	-	24,410	18,860	25.1 ft	79.1 ft
	30 ft lb	-	-	-	-	-	-	-	-	-	-	-	-	-	-	11 710	11 710	6.6 m	21.3 ft
	7.5 m kg	-	-	-	-	-	-	-	-	-	-	-	-	-	-	25,990	25,990	21.3 ft	69.2 ft
	25 ft lb	-	-	-	-	-	-	-	-	-	-	-	-	-	-	11 270	9 810	7.9 m	25.6 ft
	6 m kg	-	-	-	-	-	-	-	-	-	-	-	-	-	-	11 180	8 260	8.7 m	27.6 ft
	20 ft lb	-	-	-	-	-	-	-	-	-	-	-	-	-	-	24,660	18,370	28.5 ft	88.1 ft
	4.5 m kg	-	-	-	-	-	-	-	-	-	-	-	-	-	-	11 260	7 430	9.2 m	30.2 ft
	15 ft lb	-	-	-	-	-	-	-	-	-	-	-	-	-	-	24,820	16,440	30.2 ft	93.6 ft
	3 m kg	-	-	-	-	-	-	-	-	-	-	-	-	-	-	11 140	7 010	9.5 m	31.1 ft
	10 ft lb	-	-	-	-	-	-	-	-	-	-	-	-	-	-	24,580	15,480	31.1 ft	95.3 ft
	1.5 m kg	-	-	-	-	-	-	-	-	-	-	-	-	-	-	11 030	6 910	9.5 m	29.2 ft
	5 ft lb	-	-	-	-	-	-	-	-	-	-	-	-	-	-	24,310	15,240	31.1 ft	95.3 ft
	0 m kg	-	-	-	-	-	-	-	-	-	-	-	-	-	-	11 400	7 110	9.2 m	29.9 ft
	0 ft lb	-	-	-	-	-	-	-	-	-	-	-	-	-	-	25,130	15,690	30.2 ft	92.6 ft
	-1.5 m kg	-	-	-	-	-	-	-	-	-	-	-	-	-	-	12 310	7 700	8.7 m	27.6 ft
	-5 ft lb	-	-	-	-	-	-	-	-	-	-	-	-	-	-	27,160	17,020	28.5 ft	87.7 ft
	-3 m kg	-	-	27 060	27 060	22 120	19 710	17 360	12 780	13 500	9 460	-	-	-	-	12 490	8 920	7.9 m	24.3 ft
	-10 ft lb	-	-	60,130	60,130	48,010	42,400	37,550	27,580	28,890	20,480	-	-	-	-	27,540	19,850	25.7 ft	78.3 ft
	-4.5 m kg	-	-	-	-	-	-	-	-	-	-	-	-	-	-	12 200	11 720	6.6 m	21.3 ft
	-15 ft lb	-	-	-	-	-	-	-	-	-	-	-	-	-	-	26,810	26,320	21.3 ft	66.0 ft
	9 m kg	-	-	-	-	-	-	-	-	-	-	-	-	-	-	10 080	10 080	7.6 m	24.6 ft
	30 ft lb	-	-	-	-	-	-	-	-	-	-	-	-	-	-	22,220	22,220	24.5 ft	74.8 ft
	7.5 m kg	-	-	-	-	-	-	-	-	-	-	-	-	-	-	9 470	8 430	8.7 m	26.6 ft
	25 ft lb	-	-	-	-	-	-	-	-	-	-	-	-	-	-	20,950	18,880	28.4 ft	87.5 ft
	6 m kg	-	-	-	-	-	-	-	-	-	-	-	-	-	-	9 270	7 260	9.5 m	29.5 ft
	20 ft lb	-	-	-	-	-	-	-	-	-	-	-	-	-	-	20,450	16,140	30.9 ft	94.3 ft
	4.5 m kg	-	-	-	-	-	-	-	-	-	-	-	-	-	-	9 340	6 590	9.9 m	30.3 ft
	15 ft lb	-	-	-	-	-	-	-	-	-	-	-	-	-	-	20,590	14,590	32.6 ft	99.8 ft
	3 m kg	-	-	-	-	-	-	-	-	-	-	-	-	-	-	9 670	6 240	10.2 m	33.3 ft
	10 ft lb	-	-	-	-	-	-	-	-	-	-	-	-	-	-	21,290	13,780	33.3 ft	102.4 ft
	1.5 m kg	-	-	-	-	-	-	-	-	-	-	-	-	-	-	9 840	6 140	10.2 m	33.3 ft
	5 ft lb	-	-	-	-	-	-	-	-	-	-	-	-	-	-	21,700	13,530	33.3 ft	104.0 ft
	0 m kg	-	-	-	-	-	-	-	-	-	-	-	-	-	-	10 100	6 270	9.9 m	30.3 ft
	0 ft lb	-	-	-	-	-	-	-	-	-	-	-	-	-	-	22,270	13,830	32.6 ft	100.0 ft
	-1.5 m kg	-	-	13 700	13 700	25 160	18 970	18 790	12 350	14 780	9 080	11 560	7 120	-	-	10 820	6 690	9.4 m	30.0 ft
	-5 ft lb	-	-	31,100	31,100	54,600	40,790	40,740	26,640	32,020	19,590	24,930	15,380	-	-	23,890	14,780	31.0 ft	95.9 ft
	-3 m kg	-	-	23 340	23 340	23 580	19 170	18 020	12 420	14 180	9 120	-	-	-	-	11 610	7 570	8.7 m	26.6 ft
	-10 ft lb	-	-	52,860	52,860	51,130	41,240	39,000	26,800	30,600	19,710	-	-	-	-	25,620	16,770	28.4 ft	87.5 ft
	-4.5 m kg	-	-	27 470	27 470	20 660	19 600	15 940	12 710	11 940	9 420	-	-	-	-	11 790	9 350	7.5 m	24.3 ft
	-15 ft lb	-	-	59,350	59,350	44,560	42,190	34,250	27,440	11,940	20,770	-	-	-	-	26,000	20,910	24.5 ft	74.8 ft
	9 m kg	-	-	-	-	-	-	-	-	-	-	-	-	-	-	8 060	8 060	8.3 m	27.2 ft
	30 ft lb	-	-	-	-	-	-	-	-	-	-	-	-	-	-	17,900	17,900	26.7 ft	81.3 ft
	7.5 m kg	-	-	-	-	-	-	-	-	-	-	-	-	-	-	7 630	7 630	9.3 m	28.9 ft
	25 ft lb	-	-	-	-	-	-	-	-	-	-	-	-	-	-	16,870	16,870	30.3 ft	92.6 ft
	6 m kg	-	-	-	-	-	-	-	-	-	-	-	-	-	-	7 490	6 700	10.0 m	32.6 ft
	20 ft lb	-	-	-	-	-	-	-	-	-	-	-	-	-	-	16,510	14,890	32.7 ft	100.0 ft
	4.5 m kg	-	-	-	-	-	-	-	-	-	-	-	-	-	-	7 550	6 130	10.4 m	32.7 ft
	15 ft lb	-	-	-	-	-	-	-	-	-	-	-	-	-	-	16,630	13,560	34.2 ft	103.7 ft
	3 m kg	-	-	-	-	-	-	-	-	-	-	-	-	-	-	7 800	5 810	10.7 m	32.7 ft
	10 ft lb	-	-	-	-	-	-	-	-	-	-	-	-	-	-	17,170	12,840	35.0 ft	107.0 ft
	1.5 m kg	-	-	-	-	-	-	-	-	-	-	-	-	-	-	8 260	5 710	10.7 m	32.7 ft
	5 ft lb	-	-	-	-	-	-	-	-	-	-	-	-	-	-	18,190	12,600	35.0 ft	107.0 ft
	0 m kg	-	-	-	-	-	-	-	-	-	-	-	-	-	-	9 000	5 810	10.4 m	32.7 ft
	0 ft lb	-	-	-	-	-	-	-	-	-	-	-	-	-	-	19,840	12,820	34.2 ft	103.7 ft
	-1.5 m kg	9 630	9 630	13 700	13 700	25 520	18 870	18 780	12 320	14 710	9 040	11 490	7 060	-	-	9 950	6 150	10.0 m	32.7 ft
	-5 ft lb	21,520	21,520	30,970	30,970	55,330	40,590	40,690	26,570	31,890	19,510	24,780	15,230	-	-	21,970	13,590	32.7 ft	100.0 ft
	-3 m kg	16 090	16 090	21 130	21 130	24 410	18 990	18 370	12 320	14 450	9 030	11 540	7 100	-	-	11 010	6 850	9.3 m	29.9 ft
	-10 ft lb	36,050	36,050	47,760	47,760	52,900	40,840	39,790	26,560	31,250	19,490	24,740	15,360	-	-	24,310	15,170	30.3 ft	92.6 ft
	-4.5 m kg	-	-	30 400	30 400	22 040	19 330	16 850	12 520	13 070	9 200	-	-	-	-	11 330	8 210	8.2 m	26.6 ft
	-15 ft lb	-	-	65,700	65,700	47,610	41,600	36,310</											

Specifications.

LIFTING CAPACITY EC480EL fixed undercarriage

Lifting capacity at the arm end without bucket.

For lifting capacity including bucket, simply subtract actual weight of the direct fit bucket or the bucket with quick coupler from the following values.

	Lifting hook related to ground level	1.5 m (5 ft)		3.0 m (10 ft)		4.5 m (15 ft)		6.0 m (20 ft)		7.5 m (25 ft)		9.0 m (30 ft)		10.5 m (35 ft)		Max. reach			
		Along UC	Across UC	Along UC	Across UC	Along UC	Across UC	Along UC	Across UC	Along UC	Across UC	Along UC	Across UC	Along UC	Across UC	Front	Side	Max.	
Boom:	9 m kg	-	-	-	-	-	-	-	-	-	-	-	-	-	-	-	-	-	-
7.0 m (23' 0")	30 ft lb	-	-	-	-	-	-	-	-	-	-	-	-	-	-	-	-	-	-
Arm:	7.5 m kg	-	-	-	-	-	-	-	-	-	-	-	-	-	-	-	-	-	-
4.8 m (15' 9")	25 ft lb	-	-	-	-	-	-	-	-	-	-	-	-	-	-	-	-	-	-
Shoe:	6 m kg	-	-	-	-	-	-	-	-	-	-	-	-	-	-	-	-	-	-
900 mm (36")	20 ft lb	-	-	-	-	-	-	-	-	-	-	-	-	-	-	-	-	-	-
CWT:	4.5 m kg	-	-	-	-	-	-	-	-	-	-	-	-	-	-	-	-	-	-
9 050 kg (19,960 lb)	15 ft lb	-	-	-	-	-	-	-	-	-	-	-	-	-	-	-	-	-	-
	3 m kg	-	-	-	-	-	-	-	-	-	-	-	-	-	-	-	-	-	-
	10 ft lb	-	-	-	-	-	-	-	-	-	-	-	-	-	-	-	-	-	-
	1.5 m kg	-	-	-	-	-	-	-	-	-	-	-	-	-	-	-	-	-	-
	5 ft lb	-	-	-	-	-	-	-	-	-	-	-	-	-	-	-	-	-	-
	0 m kg	-	-	-	-	-	-	-	-	-	-	-	-	-	-	-	-	-	-
	0 ft lb	-	-	-	-	-	-	-	-	-	-	-	-	-	-	-	-	-	-
	-1.5 m kg	*9 300	*9 300	*13 830	*13 830	*25 250	*18 570	*18 260	12 150	*14 250	8 890	11 330	6 890	9 080	5 550	8 780	5 370	10.8 m	
	-5 ft lb	*20,760	*20,760	*31,210	*31,210	*54,700	39,940	*39,570	26,180	*30,900	19,160	24,420	14,860	19,580	11,980	19,390	11,860	35.3 ft	
	-3 m kg	*14 260	*14 260	*19 340	*19 340	*24 960	18 510	*18 420	12 020	*14 430	8 780	11 270	6 830	-	-	9 610	5 870	10.1 m	
	-10 ft lb	*31,910	*31,910	*43,650	*43,650	*54,080	39,810	*39,910	25,900	*31,250	18,930	24,300	14,750	-	-	21,280	13,000	33.0 ft	
	-4.5 m kg	*19 970	*19 970	*26 530	*26 530	*23 480	18 710	*18 630	12 100	*13 820	8 830	*10 870	6 940	-	-	*10 600	6 810	9.1 m	
	-15 ft lb	*44,860	*44,860	*60,120	*60,120	*50,760	40,270	*38,100	26,090	*29,780	19,080	*23,960	15,300	-	-	*23,430	15,160	29.8 ft	
	-6 m kg	-	-	*28 670	*28 670	*20 450	19 180	*15 490	12 400	*11 730	9 120	-	-	-	-	*11 050	8 720	7.8 m	
	-20 ft lb	-	-	*61,480	*61,480	*43,870	41,330	*33,120	26,800	*24,670	19,780	-	-	-	-	*24,410	19,630	25.1 ft	
Boom:	9 m kg	-	-	-	-	-	-	-	-	-	-	-	-	-	-	-	-	-	-
7.0 m (23' 0")	30 ft lb	-	-	-	-	-	-	-	-	-	-	-	-	-	-	-	-	-	-
Arm:	7.5 m kg	-	-	-	-	-	-	-	-	-	-	-	-	-	-	-	-	-	-
2.55 m (8' 4")	25 ft lb	-	-	-	-	-	-	-	-	-	-	-	-	-	-	-	-	-	-
Shoe:	6 m kg	-	-	-	-	-	-	-	-	-	-	-	-	-	-	-	-	-	-
900 mm (36")	20 ft lb	-	-	-	-	-	-	-	-	-	-	-	-	-	-	-	-	-	-
CWT:	4.5 m kg	-	-	-	-	-	-	-	-	-	-	-	-	-	-	-	-	-	-
9 750 kg (21,500 lb)	15 ft lb	-	-	-	-	-	-	-	-	-	-	-	-	-	-	-	-	-	-
	3 m kg	-	-	-	-	-	-	-	-	-	-	-	-	-	-	-	-	-	-
	10 ft lb	-	-	-	-	-	-	-	-	-	-	-	-	-	-	-	-	-	-
	1.5 m kg	-	-	-	-	-	-	-	-	-	-	-	-	-	-	-	-	-	-
	5 ft lb	-	-	-	-	-	-	-	-	-	-	-	-	-	-	-	-	-	-
	0 m kg	-	-	-	-	-	-	-	-	-	-	-	-	-	-	-	-	-	-
	0 ft lb	-	-	-	-	-	-	-	-	-	-	-	-	-	-	-	-	-	-
	-1.5 m kg	-	-	-	-	-	-	-	-	-	-	-	-	-	-	-	-	-	-
	-5 ft lb	-	-	-	-	-	-	-	-	-	-	-	-	-	-	-	-	-	-
	-3 m kg	-	-	*27 060	*27 060	*22 120	20 620	*17 360	13 390	*13 500	9 920	-	-	-	-	*12 490	9 380	7.9 m	
	-10 ft lb	-	-	*60,130	*60,130	*48,010	44,360	*37,550	28,890	*28,890	21,470	-	-	-	-	*27,540	20,810	25.7 ft	
	-4.5 m kg	-	-	*18 270	*18 270	*14 090	13 820	-	-	-	-	-	-	-	-	*12 200	12 200	6.6 m	
	-15 ft lb	-	-	*39,280	*39,280	*29,870	29,870	-	-	-	-	-	-	-	-	*26,810	26,810	21.3 ft	
Boom:	9 m kg	-	-	-	-	-	-	-	-	-	-	-	-	-	-	-	-	-	-
7.0 m (23' 0")	30 ft lb	-	-	-	-	-	-	-	-	-	-	-	-	-	-	-	-	-	-
Arm:	7.5 m kg	-	-	-	-	-	-	-	-	-	-	-	-	-	-	-	-	-	-
3.35 m (11' 0")	25 ft lb	-	-	-	-	-	-	-	-	-	-	-	-	-	-	-	-	-	-
Shoe:	6 m kg	-	-	-	-	-	-	-	-	-	-	-	-	-	-	-	-	-	-
900 mm (36")	20 ft lb	-	-	-	-	-	-	-	-	-	-	-	-	-	-	-	-	-	-
CWT:	4.5 m kg	-	-	-	-	-	-	-	-	-	-	-	-	-	-	-	-	-	-
9 750 kg (21,500 lb)	15 ft lb	-	-	-	-	-	-	-	-	-	-	-	-	-	-	-	-	-	-
	3 m kg	-	-	-	-	-	-	-	-	-	-	-	-	-	-	-	-	-	-
	10 ft lb	-	-	-	-	-	-	-	-	-	-	-	-	-	-	-	-	-	-
	1.5 m kg	-	-	-	-	-	-	-	-	-	-	-	-	-	-	-	-	-	-
	5 ft lb	-	-	-	-	-	-	-	-	-	-	-	-	-	-	-	-	-	-
	0 m kg	-	-	-	-	-	-	-	-	-	-	-	-	-	-	-	-	-	-
	0 ft lb	-	-	-	-	-	-	-	-	-	-	-	-	-	-	-	-	-	-
	-1.5 m kg	-	-	*13 700	*13 700	*25 160	19 880	*18 790	12 960	*14 780	9 530	12 010	7 480	-	-	11 250	7 040	9.4 m	
	-5 ft lb	-	-	*31,100	*31,100	*54,600	42,750	*40,740	27,950	*32,020	20,580	25,920	16,170	-	-	24,840	15,550	31.0 ft	
	-3 m kg	-	-	*23 340	*23 340	*23 580	20 080	*18 020	13 030	*14 180	9 580	-	-	-	-	*11 610	7 950	8.7 m	
	-10 ft lb	-	-	*52,860	*52,860	*51,130	43,200	*39,000	28,110	*30,600	20,700	-	-	-	-	*25,620	17,620	28.4 ft	
	-4.5 m kg	-	-	*27 470	*27 470	*20 660	20 510	*15 940	13 320	*11 940	9 880	-	-	-	-	*11 790	9 810	7.5 m	
	-15 ft lb	-	-	*59,350	*59,350	*44,560	44,150	*34,250	28,750	*26,320	21,780	-	-	-	-	*26,000	21,920	24.5 ft	
Boom:	9 m kg	-	-	-	-	-	-	-	-	-	-	-	-	-	-	-	-	-	-
7.0 m (23' 0")	30 ft lb	-	-	-	-	-	-	-	-	-	-	-	-	-	-	-	-	-	-
Arm:	7.5 m kg	-	-	-	-	-	-	-	-	-	-	-	-	-	-	-	-	-	-
3.9 m (12' 10")	25 ft lb	-	-	-	-	-	-	-	-	-	-	-	-	-	-	-	-	-	-
Shoe:	6 m kg	-	-	-	-	-	-	-	-	-	-	-	-	-	-	-	-	-	-
900 mm (36")	20 ft lb	-	-	-	-	-	-	-	-	-	-	-	-	-	-	-	-	-	-
CWT:	4.5 m kg	-	-	-	-	-	-	-	-	-	-	-	-	-	-	-	-	-	-
9 750 kg (21,500 lb)	15 ft lb	-	-	-	-	-	-	-	-	-	-	-	-	-	-	-	-	-	-
	3 m kg	-	-	-	-	-	-	-	-	-	-	-	-	-	-	-	-	-	-
	10 ft lb	-	-	-	-	-	-	-	-	-	-	-	-	-	-	-	-	-	-
	1.5 m kg	-	-	-	-	-	-	-	-	-	-	-	-	-	-	-	-	-	-
	5 ft lb	-	-	-	-	-	-	-	-	-	-	-	-	-	-	-	-	-	-
	0 m kg	-	-	-	-	-	-	-	-	-	-	-	-	-	-	-	-	-	-
	0 ft lb	-	-	-	-	-	-	-	-	-	-	-	-	-	-	-	-	-	-
	-1.5 m kg	*9 630	*9 630	*13 700	*13 700	*25 520	19 780	*18 780	12 930	*14 710	9 500	11 950	7 420	-	-	*10 190	6 480	10.0 m	
	-5 ft lb	*21,520	*21,520	*30,970	*30,970	*55,330	42,550	*40,690	27,880	*31,890	20,500	25,770	16,020	-	-	*22,480	14,300	32.7 ft	
	-3 m kg	*16 090	*16 090	*21 130	*21 130	*24 410	19 900	*18 370	12 930	*14 450	9 480	*11 540	7 460	-	-	*11 010	7 200	9.3 m	
	-10 ft lb	*36,050	*36,050	*47,760	*47,760	*52,900	42,810	*39,790	27,880	*31,250	20,480	*24,740	16,150	-	-	*24,310	15,960	30.3 ft	
	-4.5 m kg	-	-	*30 400	*30 400	*22 040	20 240	*16 850	13 120	*13 070	9 660	-	-	-	-	*11 330	8 620	8.2 m	
	-15 ft lb	-	-	*65,700	*65,700	*47,610	43,560	*36,310	28,330	*27,930	20,900	-	-	-	-	*25,010	19,220	26.7 ft	
	-6 m kg	-	-	-	-	-	-	-	-	-	-	-	-	-	-	-	-	-	-
	-20 ft lb	-	-	-	-	-	-	-	-	-	-	-	-	-	-	-	-	-	-

Notes: 1. Machine in "Fine Mode-F" (Power Boost) for lifting capacities. 2. The above loads are in compliance with SAE J1097 and ISO 10567 Hydraulic Excavator Lifting Capacity Standards. 3. Rated loads do not exceed 87% of hydraulic lifting capacity or 75% of tipping load. 4. Rated loads marked with an asterisk (*) are limited by hydraulic capacity rather than tipping load.

Specifications.

LIFTING CAPACITY EC480EL retractable undercarriage

Lifting capacity at the arm end without bucket.

For lifting capacity including bucket, simply subtract actual weight of the direct fit bucket or the bucket with quick coupler from the following values.

	Lifting hook related to ground level	1.5 m (5 ft)		3.0 m (10 ft)		4.5 m (15 ft)		6.0 m (20 ft)		7.5 m (25 ft)		9.0 m (30 ft)		10.5 m (35 ft)		Max. reach			
		Along UC	Across UC	Along UC	Across UC	Along UC	Across UC	Along UC	Across UC	Along UC	Across UC	Along UC	Across UC	Along UC	Across UC	Front	Side	Max.	
Boom:	7.5 m kg	-	-	-	-	-	-	-	-	-	-	-	-	-	-	*12 260	11 700	7.3 m	
6.5 m (21' 4")	25 ft lb	-	-	-	-	-	-	-	-	-	-	-	-	-	-	*27,100	26,330	23.5 ft	
Arm:	6 m kg	-	-	-	-	-	-	*13 240	*13 240	*12 170	*11 040	-	-	-	-	*12 020	9 610	8.2 m	
2.55 m (8' 4")	20 ft lb	-	-	-	-	-	-	*28,790	*28,790	*26,700	*23,750	-	-	-	-	*26,490	21,390	26.6 ft	
Shoe:	4.5 m kg	-	-	-	-	*19 760	*19 760	*15 080	*15 030	*12 920	*10 750	-	-	-	-	*12 020	8 540	8.7 m	
900 mm (36")	15 ft lb	-	-	-	-	*42,350	*42,350	*32,620	*32,440	*28,150	*23,180	-	-	-	-	*26,470	18,910	28.5 ft	
CWT:	3 m kg	-	-	-	-	*23 490	21 630	*17 140	14 310	*13 940	10 400	-	-	-	-	12 150	8 020	8.9 m	
8 450 kg (18,630 lb)	10 ft lb	-	-	-	-	*52,020	46,700	*37,040	30,890	*30,270	22,440	-	-	-	-	26,820	17,710	29.3 ft	
	1.5 m kg	-	-	-	-	*17 070	*17 070	*18 690	13 770	*14 810	10 100	-	-	-	-	12 020	7 900	8.9 m	
	5 ft lb	-	-	-	-	*42,170	*42,170	*40,460	29,700	*32,140	21,790	-	-	-	-	26,500	17,420	29.3 ft	
	0 m kg	-	-	-	-	*25 150	20 690	*19 320	13 490	*15 210	9 910	-	-	-	-	12 480	8 160	8.7 m	
	0 ft lb	-	-	-	-	*56,670	44,490	*41,880	29,090	*32,980	21,400	-	-	-	-	27,520	18,000	28.5 ft	
	-1.5 m kg	-	-	*18 520	*18 520	*24 790	20 780	*18 890	13 450	*14 780	9 900	-	-	-	-	*13 220	8 940	8.1 m	
	-5 ft lb	-	-	*42,260	*42,260	*53,860	44,670	*40,930	29,000	*31,910	21,380	-	-	-	-	*29,150	19,760	26.6 ft	
	-3 m kg	-	-	*28 510	*28 510	*22 150	21 090	*17 070	13 640	-	-	-	-	-	-	*13 320	10 650	7.2 m	
	-10 ft lb	-	-	*62,040	*62,040	*47,980	45,350	*36,800	29,420	-	-	-	-	-	-	*29,360	23,650	23.6 ft	
	-4.5 m kg	-	-	-	-	*17 040	*17 040	-	-	-	-	-	-	-	-	-	-	5.8 m	
	-15 ft lb	-	-	-	-	*36,300	*36,300	-	-	-	-	-	-	-	-	-	-	18.7 ft	
Boom:	9.0 m kg	-	-	-	-	-	-	-	-	-	-	-	-	-	-	*11 710	*11 710	6.6 m	
7.0 m (23' 0")	30 ft lb	-	-	-	-	-	-	-	-	-	-	-	-	-	-	*25,990	*25,990	21.3 ft	
Arm:	7.5 m kg	-	-	-	-	-	-	-	-	*11 170	*11 170	-	-	-	-	-	*11 270	10 200	7.9 m
2.55 m (8' 4")	25 ft lb	-	-	-	-	-	-	-	-	*24,710	23,970	-	-	-	-	-	*24,890	22,900	25.6 ft
Shoe:	6 m kg	-	-	-	-	-	-	*12 920	*12 920	*11 540	10 990	-	-	-	-	-	*11 180	8 590	8.7 m
900 mm (36")	20 ft lb	-	-	-	-	-	-	*27,980	*27,980	*25,200	23,670	-	-	-	-	-	*24,660	19,120	28.5 ft
CWT:	4.5 m kg	-	-	-	-	*19 960	*19 960	*14 950	14 750	*12 500	10 630	-	-	-	-	-	*11 260	7 730	9.2 m
8 450 kg (18,630 lb)	15 ft lb	-	-	-	-	*44,000	*44,000	*32,270	31,850	*27,150	22,940	*11 320	8 060	-	-	-	*24,820	17,120	30.2 ft
	3 m kg	-	-	-	-	-	-	*17 080	13 990	*13 610	10 240	*11 790	7 880	-	-	-	11 080	7 300	9.5 m
	10 ft lb	-	-	-	-	-	-	*36,860	30,210	*29,520	22,110	*25,710	16,990	-	-	-	24,450	16,130	31.1 ft
	1.5 m kg	-	-	-	-	-	-	*18 570	13 470	*14 540	9 930	11 790	7 720	-	-	-	10 970	7 200	9.5 m
	5 ft lb	-	-	-	-	-	-	*40,150	29,070	*31,520	21,430	25,420	16,660	-	-	-	24,180	15,880	31.1 ft
	0 m kg	-	-	-	-	*14 970	*14 970	*19 110	13 240	*15 020	9 740	11 700	7 640	-	-	-	11 330	7 420	9.2 m
	0 ft lb	-	-	-	-	*33,010	*33,010	*41,420	28,550	*32,550	21,030	25,250	16,510	-	-	-	24,990	16,350	30.2 ft
	-1.5 m kg	-	-	-	-	*24 260	20 530	*18 750	13 220	*14 830	9 710	-	-	-	-	-	*12 310	8 030	8.7 m
	-5 ft lb	-	-	-	-	*52,790	44,110	*40,660	28,510	*32,100	20,970	-	-	-	-	-	*27,160	17,750	28.5 ft
	-3 m kg	-	-	*27 060	*27 060	*22 120	20 820	*17 360	13 400	*13 500	9 880	-	-	-	-	-	*12 490	9 330	7.9 m
	-10 ft lb	-	-	*60,130	*60,130	*48,010	44,750	*37,550	28,890	*28,890	21,380	-	-	-	-	-	*27,540	20,710	25.7 ft
	-4.5 m kg	-	-	-	-	*18 270	*18 270	*14 090	13 830	-	-	-	-	-	-	-	*12 200	*12 200	6.6 m
	-15 ft lb	-	-	-	-	*39,280	*39,280	*29,870	*29,870	-	-	-	-	-	-	-	*26,810	*26,810	21.3 ft
Boom:	9.0 m kg	-	-	-	-	-	-	-	-	*10 020	*10 020	-	-	-	-	-	*10 080	*10 080	7.6 m
7.0 m (23' 0")	30 ft lb	-	-	-	-	-	-	-	-	*22,090	*22,090	-	-	-	-	-	*22,320	*22,320	24.5 ft
Arm:	7.5 m kg	-	-	-	-	-	-	-	-	*9 760	*9 760	-	-	-	-	-	*9 470	*8 770	8.7 m
3.35 m (11' 0")	25 ft lb	-	-	-	-	-	-	-	-	*21,460	*21,460	-	-	-	-	-	*20,950	19,640	28.4 ft
Shoe:	6 m kg	-	-	-	-	-	-	-	-	*10 360	*10 360	*9 900	8 270	-	-	-	*9 270	7 560	9.5 m
900 mm (36")	20 ft lb	-	-	-	-	-	-	-	-	*22,610	*22,610	*21,800	17,750	-	-	-	*20,450	16,790	30.9 ft
CWT:	4.5 m kg	-	-	-	-	*17 590	*17 590	*13 440	*13 440	*11 430	10 720	*10 360	8 080	-	-	-	*9 340	6 860	9.9 m
8 450 kg (18,630 lb)	15 ft lb	-	-	-	-	*37,640	*37,640	*29,030	*29,030	*24,840	23,110	*22,640	17,400	-	-	-	*20,590	15,190	32.6 ft
	3 m kg	-	-	-	-	*22 320	21 450	*15 730	14 150	*12 680	10 270	*11 020	7 850	-	-	-	*9 670	6 500	10.2 m
	10 ft lb	-	-	-	-	*47,870	46,310	*33,950	30,560	*27,510	22,150	*24,000	16,920	-	-	-	*21,290	14,360	33.3 ft
	1.5 m kg	-	-	-	-	*15 350	*15 350	*17 590	13 480	*13 820	9 870	*11 660	7 630	-	-	-	9 790	6 400	10.2 m
	5 ft lb	-	-	-	-	*36,980	*36,980	*38,040	29,090	*29,960	21,310	25,230	16,450	-	-	-	21,580	14,110	33.3 ft
	0 m kg	-	-	-	-	*18 910	*18 910	*18 640	13 100	*14 580	9 610	11 540	7 470	-	-	-	10 040	6 440	9.9 m
	0 ft lb	-	-	-	-	*44,070	43,110	*40,370	28,240	*31,600	20,730	24,870	16,130	-	-	-	22,140	14,420	32.6 ft
	-1.5 m kg	-	-	*13 700	*13 700	*25 160	20 060	*18 790	12 970	*14 780	9 490	11 490	7 430	-	-	-	10 760	6 980	9.4 m
	-5 ft lb	-	-	*31,100	*31,100	*54,600	43,110	*40,740	27,950	*32,020	20,480	24,790	16,050	-	-	-	23,750	15,420	31.0 ft
	-3 m kg	-	-	*23 340	*23 340	*23 580	20 270	*18 020	13 040	*14 180	9 540	-	-	-	-	-	*11 610	7 900	8.7 m
	-10 ft lb	-	-	*52,860	*52,860	*51,130	43,570	*39,000	28,110	*30,600	20,610	-	-	-	-	-	*25,620	17,510	28.4 ft
	-4.5 m kg	-	-	*27 470	*27 470	*20 660	*20 660	*15 940	13 320	*11 940	9 840	-	-	-	-	-	*11 790	9 770	7.5 m
	-15 ft lb	-	-	*59,350	*59,350	*44,560	44,550	*34,250	28,760	*26,320	21,690	-	-	-	-	-	*26,000	21,840	24.5 ft
Boom:	9 m kg	-	-	-	-	-	-	-	-	-	-	-	-	-	-	-	*8 060	*8 060	8.3 m
7.0 m (23' 0")	30 ft lb	-	-	-	-	-	-	-	-	-	-	-	-	-	-	-	*17,900	*17,900	26.7 ft
Arm:	7.5 m kg	-	-	-	-	-	-	-	-	-	-	*9 070	8 490	-	-	-	*7 630	*7 630	9.3 m
3.9 m (12' 10")	25 ft lb	-	-	-	-	-	-	-	-	-	-	*18,290	18,170	-	-	-	*16,870	*16,870	30.3 ft
Shoe:	6 m kg	-	-	-	-	-	-	-	-	*9 620	*9 620	*9 230	8 390	-	-	-	*7 490	6 970	10.0 m
900 mm (36")	20 ft lb	-	-	-	-	-	-	-	-	*20,990	*20,990	*20,270	18,050	-	-	-	*16,510	15,490	32.7 ft
CWT:	4.5 m kg	-	-	-	-	-	-	*12 430	*12 430	*10 750	*10 750	*9 800	8 180	-	-	-	*7 550	6 380	10.4 m
8 450 kg (18,630 lb)	15 ft lb	-	-	-	-	-	-	*26,870	*26,870	*23,360	*23,360	*21,410	17,610	-	-	-	*16,630	14,120	34.2 ft
	3 m kg	-	-	-	-	*20 560	*20 560	*14 830	14 400	*12 090	10 390	*10 550	7 910	*9 440	6 210	-	*7 800	6 060	10.7 m
	10 ft lb	-	-	-	-	*44,120	*44,120	*32,010	31,070	*26,220	22,410	*22,980	17,050	*20,810	13,690	-	*17,170	13,380	35.0 ft
	1.5 m kg	-	-	-	-	*20 860	20 690	*16 920	13 640	*13 350	9 950	*11 300	7 660	9 320	6 090	-	*8 260	5 960	10.7 m
	5 ft lb	-	-	-	-	*49,770	44,570												

LIFTING CAPACITY EC480EL retractable undercarriage

Lifting capacity at the arm end without bucket.

For lifting capacity including bucket, simply subtract actual weight of the direct fit bucket or the bucket with quick coupler from the following values.

	Lifting hook related to ground level	1.5 m (5 ft)		3.0 m (10 ft)		4.5 m (15 ft)		6.0 m (20 ft)		7.5 m (25 ft)		9.0 m (30 ft)		10.5 m (35 ft)		Max. reach			
		Along UC	Across UC	Along UC	Across UC	Along UC	Across UC	Along UC	Across UC	Along UC	Across UC	Along UC	Across UC	Along UC	Across UC	Front	Side	Max.	
Boom:	9 m kg	-	-	-	-	-	-	-	-	-	-	-	-	-	-	-	-	-	-
7.0 m (23' 0")	30 ft lb	-	-	-	-	-	-	-	-	-	-	-	-	-	-	-	-	-	-
Arm:	7.5 m kg	-	-	-	-	-	-	-	-	-	-	-	-	-	-	-	-	-	-
4.8 m (15' 9")	25 ft lb	-	-	-	-	-	-	-	-	-	-	-	-	-	-	-	-	-	-
Shoe:	6 m kg	-	-	-	-	-	-	-	-	-	-	-	-	-	-	-	-	-	-
900 mm (36")	20 ft lb	-	-	-	-	-	-	-	-	-	-	-	-	-	-	-	-	-	-
CWT:	4.5 m kg	-	-	-	-	-	-	-	-	-	-	-	-	-	-	-	-	-	-
8 450 kg (18,630 lb)	15 ft lb	-	-	-	-	-	-	-	-	-	-	-	-	-	-	-	-	-	-
	3 m kg	-	-	-	-	-	-	-	-	-	-	-	-	-	-	-	-	-	-
	10 ft lb	-	-	-	-	-	-	-	-	-	-	-	-	-	-	-	-	-	-
	1.5 m kg	-	-	-	-	-	-	-	-	-	-	-	-	-	-	-	-	-	-
	5 ft lb	-	-	-	-	-	-	-	-	-	-	-	-	-	-	-	-	-	-
	0 m kg	-	-	-	-	-	-	-	-	-	-	-	-	-	-	-	-	-	-
	0 ft lb	-	-	-	-	-	-	-	-	-	-	-	-	-	-	-	-	-	-
	-1.5 m kg	9 300	9 300	13 830	13 830	25 250	19 650	18 260	12 760	14 250	9 300	11 270	7 200	9 030	5 800	8 730	5 610	10.8 m	10.8 m
	-5 ft lb	20,760	20,760	31,210	31,210	54,700	42,260	39,570	27,500	30,900	20,060	24,280	15,530	19,470	12,520	19,270	12,400	35.3 ft	35.3 ft
	-3 m kg	14 260	14 260	19 340	19 340	24 960	19 590	18 420	12 630	14 430	9 190	11 210	7 150	-	-	9 560	6 140	10.1 m	10.1 m
	-10 ft lb	31,910	31,910	43,650	43,650	54,080	42,120	39,910	27,210	31,250	19,820	24,160	15,420	-	-	21,150	13,590	33.0 ft	33.0 ft
	-4.5 m kg	19 970	19 970	26 530	26 530	23 480	19 810	17 630	12 710	13 820	9 250	10 870	7 250	-	-	10 600	7 120	9.1 m	9.1 m
	-15 ft lb	44,860	44,860	60,120	60,120	50,760	42,590	38,100	27,400	29,780	19,970	23,960	15,980	-	-	23,430	15,850	29.8 ft	29.8 ft
	-6 m kg	-	-	-	-	-	-	-	-	-	-	-	-	-	-	-	-	-	-
	-20 ft lb	-	-	-	-	-	-	-	-	-	-	-	-	-	-	-	-	-	-
	9 m kg	-	-	61,480	61,480	43,870	43,680	33,120	28,120	24,670	20,680	-	-	-	-	24,410	20,530	25.1 ft	25.1 ft
	30 ft lb	-	-	-	-	-	-	-	-	-	-	-	-	-	-	11 710	11 710	6.6 m	6.6 m
Boom:	9 m kg	-	-	-	-	-	-	-	-	-	-	-	-	-	-	-	-	-	-
7.0 m (23' 0")	30 ft lb	-	-	-	-	-	-	-	-	-	-	-	-	-	-	-	-	-	-
Arm:	7.5 m kg	-	-	-	-	-	-	-	-	-	-	-	-	-	-	-	-	-	-
2.55 m (8' 4")	25 ft lb	-	-	-	-	-	-	-	-	-	-	-	-	-	-	-	-	-	-
Shoe:	6 m kg	-	-	-	-	-	-	-	-	-	-	-	-	-	-	-	-	-	-
900 mm (36")	20 ft lb	-	-	-	-	-	-	-	-	-	-	-	-	-	-	-	-	-	-
CWT:	4.5 m kg	-	-	-	-	-	-	-	-	-	-	-	-	-	-	-	-	-	-
9 050 kg (19,960 lb)	15 ft lb	-	-	-	-	-	-	-	-	-	-	-	-	-	-	-	-	-	-
	3 m kg	-	-	-	-	-	-	-	-	-	-	-	-	-	-	-	-	-	-
	10 ft lb	-	-	-	-	-	-	-	-	-	-	-	-	-	-	-	-	-	-
	1.5 m kg	-	-	-	-	-	-	-	-	-	-	-	-	-	-	-	-	-	-
	5 ft lb	-	-	-	-	-	-	-	-	-	-	-	-	-	-	-	-	-	-
	0 m kg	-	-	-	-	-	-	-	-	-	-	-	-	-	-	-	-	-	-
	0 ft lb	-	-	-	-	-	-	-	-	-	-	-	-	-	-	-	-	-	-
	-1.5 m kg	-	-	-	-	-	-	-	-	-	-	-	-	-	-	-	-	-	-
	-5 ft lb	-	-	-	-	-	-	-	-	-	-	-	-	-	-	-	-	-	-
	-3 m kg	-	-	-	-	-	-	-	-	-	-	-	-	-	-	-	-	-	-
	-10 ft lb	-	-	-	-	-	-	-	-	-	-	-	-	-	-	-	-	-	-
	-4.5 m kg	-	-	-	-	-	-	-	-	-	-	-	-	-	-	-	-	-	-
	-15 ft lb	-	-	-	-	-	-	-	-	-	-	-	-	-	-	-	-	-	-
	9 m kg	-	-	-	-	-	-	-	-	-	-	-	-	-	-	-	-	-	-
7.0 m (23' 0")	30 ft lb	-	-	-	-	-	-	-	-	-	-	-	-	-	-	-	-	-	-
Arm:	7.5 m kg	-	-	-	-	-	-	-	-	-	-	-	-	-	-	-	-	-	-
3.35 m (11' 0")	25 ft lb	-	-	-	-	-	-	-	-	-	-	-	-	-	-	-	-	-	-
Shoe:	6 m kg	-	-	-	-	-	-	-	-	-	-	-	-	-	-	-	-	-	-
900 mm (36")	20 ft lb	-	-	-	-	-	-	-	-	-	-	-	-	-	-	-	-	-	-
CWT:	4.5 m kg	-	-	-	-	-	-	-	-	-	-	-	-	-	-	-	-	-	-
9 050 kg (19,960 lb)	15 ft lb	-	-	-	-	-	-	-	-	-	-	-	-	-	-	-	-	-	-
	3 m kg	-	-	-	-	-	-	-	-	-	-	-	-	-	-	-	-	-	-
	10 ft lb	-	-	-	-	-	-	-	-	-	-	-	-	-	-	-	-	-	-
	1.5 m kg	-	-	-	-	-	-	-	-	-	-	-	-	-	-	-	-	-	-
	5 ft lb	-	-	-	-	-	-	-	-	-	-	-	-	-	-	-	-	-	-
	0 m kg	-	-	-	-	-	-	-	-	-	-	-	-	-	-	-	-	-	-
	0 ft lb	-	-	-	-	-	-	-	-	-	-	-	-	-	-	-	-	-	-
	-1.5 m kg	-	-	-	-	-	-	-	-	-	-	-	-	-	-	-	-	-	-
	-5 ft lb	-	-	-	-	-	-	-	-	-	-	-	-	-	-	-	-	-	-
	-3 m kg	-	-	-	-	-	-	-	-	-	-	-	-	-	-	-	-	-	-
	-10 ft lb	-	-	-	-	-	-	-	-	-	-	-	-	-	-	-	-	-	-
	-4.5 m kg	-	-	-	-	-	-	-	-	-	-	-	-	-	-	-	-	-	-
	-15 ft lb	-	-	-	-	-	-	-	-	-	-	-	-	-	-	-	-	-	-
	9 m kg	-	-	-	-	-	-	-	-	-	-	-	-	-	-	-	-	-	-
7.0 m (23' 0")	30 ft lb	-	-	-	-	-	-	-	-	-	-	-	-	-	-	-	-	-	-
Arm:	7.5 m kg	-	-	-	-	-	-	-	-	-	-	-	-	-	-	-	-	-	-
3.9 m (12' 10")	25 ft lb	-	-	-	-	-	-	-	-	-	-	-	-	-	-	-	-	-	-
Shoe:	6 m kg	-	-	-	-	-	-	-	-	-	-	-	-	-	-	-	-	-	-
900 mm (36")	20 ft lb	-	-	-	-	-	-	-	-	-	-	-	-	-	-	-	-	-	-
CWT:	4.5 m kg	-	-	-	-	-	-	-	-	-	-	-	-	-	-	-	-	-	-
9 050 kg (19,960 lb)	15 ft lb	-	-	-	-	-	-	-	-	-	-	-	-	-	-	-	-	-	-
	3 m kg	-	-	-	-	-	-	-	-	-	-	-	-	-	-	-	-	-	-
	10 ft lb	-	-	-	-	-	-	-	-	-	-	-	-	-	-	-	-	-	-
	1.5 m kg	-	-	-	-	-	-	-	-	-	-	-	-	-	-	-	-	-	-
	5 ft lb	-	-	-	-	-	-	-	-	-	-	-	-	-	-	-	-	-	-
	0 m kg	-	-	-	-	-	-	-	-	-	-	-	-	-	-	-	-	-	-
	0 ft lb	-	-	-	-	-	-	-	-	-	-	-	-	-	-	-	-	-	-
	-1.5 m kg	9 630	9 630	13 700	13 700	25 250	20 700	18 780	13 430	14 710	9 830	11 790	7 660	-	-	10 190	6 680	10.0 m	10.0 m
	-5 ft lb	21,520	21,520	30,970	30,970	55,330	44,510	40,690	28,940	31,890	21,200	25,430	16,540	-	-	22,480	14,760	32.7 ft	32.7 ft
	-3 m kg	16 090	16 090	21 130	21 130	24 410	20 830	18 370	13 430	14 450	9 810	11 540	7 710	-	-	11 010	7 440	9.3 m	9.3 m
	-10 ft lb	36,050	36,050	47,760	47,760	52,900	44,770	39,790	28,940	31,250	21,180	24,740	16,670	-	-	24,310	16,470	30.3 ft	30.3 ft
	-4.5 m kg	-	-	-	-	-	-	-	-	-	-	-	-	-	-	-	-	-	-
	-15 ft lb	-	-	-	-	-	-	-	-	-	-	-	-	-	-	-	-	-	-
	-6 m kg	-	-	-	-	-	-	-	-	-	-	-	-	-	-	-	-	-	-
	-20 ft lb	-	-	-	-	-	-	-	-	-	-	-	-	-	-	-	-	-	-

Notes: 1. Machine in "Fine Mode-F" (Power Boost) for lifting capacities. 2. The above loads are in compliance with SAE J1097 and ISO 10567 Hydraulic Excavator Lifting Capacity Standards. 3. Rated loads do not exceed 87% of hydraulic lifting capacity or 75% of tipping load. 4. Rated loads marked with an asterisk (*) are limited by hydraulic capacity rather than tipping load.

Specifications.

LIFTING CAPACITY EC480EL retractable undercarriage

Lifting capacity at the arm end without bucket.

For lifting capacity including bucket, simply subtract actual weight of the direct fit bucket or the bucket with quick coupler from the following values.

	Lifting hook related to ground level	1.5 m (5 ft)		3.0 m (10 ft)		4.5 m (15 ft)		6.0 m (20 ft)		7.5 m (25 ft)		9.0 m (30 ft)		10.5 m (35 ft)		Max. reach			
		Along UC	Across UC	Along UC	Across UC	Along UC	Across UC	Along UC	Across UC	Along UC	Across UC	Along UC	Across UC	Along UC	Across UC	Front	Side	Max.	
Boom:	9 m kg	-	-	-	-	-	-	-	-	-	-	-	-	-	-	-	-	-	-
7.0 m (23' 0")	30 ft lb	-	-	-	-	-	-	-	-	-	-	-	-	-	-	-	-	-	-
Arm:	7.5 m kg	-	-	-	-	-	-	-	-	-	-	-	-	-	-	-	-	-	-
4.8 m (15' 9")	25 ft lb	-	-	-	-	-	-	-	-	-	-	-	-	-	-	-	-	-	-
Shoe:	6 m kg	-	-	-	-	-	-	-	-	-	-	-	-	-	-	-	-	-	-
900 mm (36")	20 ft lb	-	-	-	-	-	-	-	-	-	-	-	-	-	-	-	-	-	-
CWT:	4.5 m kg	-	-	-	-	-	-	-	-	-	-	-	-	-	-	-	-	-	-
9 050 kg (19,960 lb)	15 ft lb	-	-	-	-	-	-	-	-	-	-	-	-	-	-	-	-	-	-
	3 m kg	-	-	-	-	17 390	17 390	13 050	13 050	10 870	10 870	9 610	8 250	8 850	6 450	7 300	5 630	11.4 m	11.4 m
	10 ft lb	-	-	-	-	25 250	20 840	18 260	13 250	14 250	9 670	11 640	7 500	9 330	6 050	9 020	5 850	10.8 m	10.8 m
	1.5 m kg	-	-	-	-	21 700	21 700	15 450	14 310	12 310	10 370	10 500	7 930	9 360	6 280	7 740	5 530	11.4 m	11.4 m
	5 ft lb	-	-	-	-	46,790	46,790	33,400	30,860	26,690	22,360	22,820	17,100	20,410	13,510	17,040	12,190	37.3 ft	37.3 ft
	0 m kg	-	-	-	-	24 290	20 840	17 250	13 640	13 490	9 950	11 250	7 670	9 410	6 130	8 420	5 590	11.2 m	11.2 m
	0 ft lb	-	-	-	-	52,530	44,840	37,360	29,400	29,270	21,450	24,440	16,540	20,280	13,200	18,550	12,330	36.7 ft	36.7 ft
	-1.5 m kg	9 300	9 300	13 830	13 830	25 250	20 400	18 260	13 250	14 250	9 670	11 640	7 500	9 330	6 050	9 020	5 850	10.8 m	10.8 m
	-5 ft lb	20,760	20,760	31,210	31,210	54,700	43,860	39,570	28,560	30,900	20,860	25,070	16,170	20,110	13,050	19,920	12,920	35.3 ft	35.3 ft
	-3 m kg	14 260	14 260	19 340	19 340	24 960	20 340	18 420	13 120	14 430	9 560	11 570	7 440	-	-	9 870	6 400	10.1 m	10.1 m
	-10 ft lb	31,910	31,910	43,650	43,650	54,080	43,720	39,910	28,270	31,250	20,620	24,950	16,060	-	-	21,850	14,160	33.0 ft	33.0 ft
	-4.5 m kg	19 970	19 970	26 530	26 530	23 480	20 550	18 630	13 200	13 820	9 620	10 870	7 550	-	-	10 600	7 410	9.1 m	9.1 m
	-15 ft lb	44,860	44,860	60,120	60,120	50,760	44,200	38,100	28,470	29,780	20,770	23,960	16,640	-	-	23,430	16,490	29.8 ft	29.8 ft
	-6 m kg	-	-	28 670	28 670	20 450	20 450	15 490	13 510	11 730	9 910	-	-	-	-	11 050	9 470	7.9 m	7.9 m
	-20 ft lb	-	-	61,480	61,480	43,870	43,870	33,120	29,190	24,670	21,480	-	-	-	-	24,410	21,320	25.1 ft	25.1 ft
Boom:	9 m kg	-	-	-	-	-	-	-	-	-	-	-	-	-	-	-	-	-	-
7.0 m (23' 0")	30 ft lb	-	-	-	-	-	-	-	-	-	-	-	-	-	-	-	-	-	-
Arm:	7.5 m kg	-	-	-	-	-	-	-	-	11 170	11 170	-	-	-	-	-	-	-	-
2.55 m (8' 4")	25 ft lb	-	-	-	-	-	-	-	-	24,710	24,710	-	-	-	-	-	-	-	-
Shoe:	6 m kg	-	-	-	-	-	-	-	-	12 920	12 920	11 540	11 540	-	-	-	-	-	-
900 mm (36")	20 ft lb	-	-	-	-	-	-	-	-	27,980	27,980	25,200	25,200	-	-	-	-	-	-
CWT:	4.5 m kg	-	-	-	-	19 960	19 960	14 950	14 950	12 500	11 470	11 320	8 730	-	-	11 260	8 380	9.2 m	9.2 m
9 750 kg (21,500 lb)	15 ft lb	-	-	-	-	44,000	44,000	32,270	32,270	27,150	24,760	24,840	18,780	-	-	24,660	18,560	30.2 ft	30.2 ft
	3 m kg	-	-	-	-	-	-	17 080	15 110	13 610	11 080	11 790	8 550	-	-	11 450	7 940	9.5 m	9.5 m
	10 ft lb	-	-	-	-	-	-	36,860	32,640	29,520	23,930	25,710	18,440	-	-	25,240	17,520	31.1 ft	31.1 ft
	1.5 m kg	-	-	-	-	-	-	18 570	14 590	14 540	10 770	12 230	8 390	-	-	11 710	7 830	9.5 m	9.5 m
	5 ft lb	-	-	-	-	-	-	40,150	31,490	31,520	23,250	26,590	18,110	-	-	25,810	17,270	31.1 ft	31.1 ft
	0 m kg	-	-	-	-	14 970	14 970	19 110	14 360	15 020	10 580	12 360	8 310	-	-	12 010	8 070	9.2 m	9.2 m
	0 ft lb	-	-	-	-	33,010	33,010	41,420	30,970	32,550	22,850	26,740	17,960	-	-	26,490	17,790	30.2 ft	30.2 ft
	-1.5 m kg	-	-	-	-	24 260	22 220	18 750	14 350	14 830	10 550	-	-	-	-	12 310	8 730	8.7 m	8.7 m
	-5 ft lb	-	-	-	-	52,790	47,750	40,660	30,930	32,100	22,790	-	-	-	-	27,160	19,290	28.5 ft	28.5 ft
	-3 m kg	-	-	27 060	27 060	22 120	22 120	17 360	14 520	13 500	10 720	-	-	-	-	12 490	10 120	7.9 m	7.9 m
	-10 ft lb	-	-	60,130	60,130	48,010	48,010	37,550	31,320	28,890	23,190	-	-	-	-	27,540	22,470	25.7 ft	25.7 ft
	-4.5 m kg	-	-	-	-	18 270	18 270	14 090	14 090	-	-	-	-	-	-	12 200	12 200	6.6 m	6.6 m
	-15 ft lb	-	-	-	-	39,280	39,280	29,870	29,870	-	-	-	-	-	-	26,810	26,810	21.3 ft	21.3 ft
Boom:	9 m kg	-	-	-	-	-	-	-	-	10 020	10 020	-	-	-	-	-	-	-	-
7.0 m (23' 0")	30 ft lb	-	-	-	-	-	-	-	-	22,090	22,090	-	-	-	-	-	-	-	-
Arm:	7.5 m kg	-	-	-	-	-	-	-	-	9 760	9 760	-	-	-	-	-	-	-	-
3.35 m (11' 0")	25 ft lb	-	-	-	-	-	-	-	-	21,460	21,460	-	-	-	-	-	-	-	-
Shoe:	6 m kg	-	-	-	-	-	-	-	-	10 360	10 360	9 900	8 940	-	-	-	-	-	-
900 mm (36")	20 ft lb	-	-	-	-	-	-	-	-	22,610	22,610	21,800	19,200	-	-	-	-	-	-
CWT:	4.5 m kg	-	-	-	-	17 590	17 590	13 440	13 440	11 430	11 430	10 360	8 750	-	-	9 340	7 460	9.9 m	9.9 m
9 750 kg (21,500 lb)	15 ft lb	-	-	-	-	37,640	37,640	29,030	29,030	24,840	24,840	22,640	18,850	-	-	20,590	16,510	32.6 ft	32.6 ft
	3 m kg	-	-	-	-	22 320	22 320	15 730	15 270	12 680	11 110	11 020	8 520	-	-	9 670	7 080	10.2 m	10.2 m
	10 ft lb	-	-	-	-	47,870	47,870	33,950	32,980	27,510	23,970	24,000	18,370	-	-	21,290	15,640	33.3 ft	33.3 ft
	1.5 m kg	-	-	-	-	15 350	15 350	17 590	14 600	13 820	10 710	11 660	8 300	-	-	10 280	6 980	10.2 m	10.2 m
	5 ft lb	-	-	-	-	36,980	36,980	38,040	31,510	29,960	23,120	25,340	17,900	-	-	22,630	15,390	33.3 ft	33.3 ft
	0 m kg	-	-	-	-	18 910	18 910	18 640	14 220	14 580	10 450	12 070	8 150	-	-	10 770	7 140	9.9 m	9.9 m
	0 ft lb	-	-	-	-	44,070	44,070	40,370	30,660	31,600	22,540	26,200	17,580	-	-	23,750	15,740	32.6 ft	32.6 ft
	-1.5 m kg	-	-	13 700	13 700	25 160	21 750	18 790	14 090	14 780	10 330	12 030	8 100	-	-	11 270	7 620	9.4 m	9.4 m
	-5 ft lb	-	-	31,100	31,100	54,600	46,750	40,740	30,370	32,020	22,300	25,980	17,500	-	-	24,860	16,820	31.0 ft	31.0 ft
	-3 m kg	-	-	23 340	23 340	23 580	21 960	18 020	14 160	14 180	10 380	-	-	-	-	11 610	8 600	8.7 m	8.7 m
	-10 ft lb	-	-	52,860	52,860	51,130	47,220	39,000	30,530	30,600	22,420	-	-	-	-	25,620	19,060	28.4 ft	28.4 ft
	-4.5 m kg	-	-	27 470	27 470	20 660	20 660	15 940	14 450	11 940	10 680	-	-	-	-	11 790	10 600	7.5 m	7.5 m
	-15 ft lb	-	-	59,350	59,350	44,560	44,560	34,250	31,190	26,320	23,540	-	-	-	-	26,000	23,700	24.5 ft	24.5 ft
Boom:	9 m kg	-	-	-	-	-	-	-	-	-	-	-	-	-	-	-	-	-	-
7.0 m (23' 0")	30 ft lb	-	-	-	-	-	-	-	-	-	-	-	-	-	-	-	-	-	-
Arm:	7.5 m kg	-	-	-	-	-	-	-	-	-	-	-	-	-	-	-	-	-	-
3.9 m (12' 10")	25 ft lb	-	-	-	-	-	-	-	-	-	-	9 070	9 070	-	-	-	-	-	-
Shoe:	6 m kg	-	-	-	-	-	-	-	-	-	-	18,290	18,290	-	-	-	-	-	-
900 mm (36")	20 ft lb	-	-	-	-	-	-	-	-	-	-	9 620	9 620	9 230	9 060	-	-	-	-
CWT:	4.5 m kg	-	-	-	-	-	-	-	-	-	-	20,990	20,990	20,270	19,500	-	-	-	-
9 750 kg (21,500 lb)	15 ft lb	-	-	-	-	-	-	12 430	12 430	10 750	10 750	9 800	8 850	-	-	7 550	6 940	10.4 m	10.4 m
	3 m kg	-	-	-	-	20 560	20 560	14 830	14 830	12 090	11 230	10 550	8 580	-	-	7 800	6 610	10.7 m	10.7 m
	10 ft lb	-	-	-	-	44,120	44,120	32,010	32,010	26,220	24,220	22,980	18,500	-	-	20,810	14,920	35.0 ft	35.0 ft

Equipment.

STANDARD EQUIPMENT

Engine

Turbocharged, 4 stroke diesel engine with water cooling, direct injection and charged air cooler that meets Tier 4f EU (Stage IV) requirements

Air filter with indicator

Air intake heater

Cyclone pre-cleaner

Electric engine shut-off

Fuel filter and water separator

Alternator, 80 A

Electric/Electronic control system

Contronics

Advanced mode control system

Self-diagnostic system

Machine status indication

Engine speed sensing power control

Automatic idling system

One-touch power boost

Safety stop/start function

Adjustable 8 inch LCD color monitor

Master electrical disconnect switch

Engine restart prevention circuit

High-capacity halogen lights:

Frame-mounted 2

Boom-mounted 2

Batteries, 2 x 12 V / 200 Ah

Start motor, 24 V / 7 kW

Travel alarm

Hydraulic system

Boom float without hose rupture valves

Overload warning device

Automatic sensing hydraulic system

2-pump flow bucket circuit

Summation system

Boom priority

Arm priority

Swing priority

Boom, arm and bucket regeneration valves

Swing anti-rebound valves

Boom and arm holding valves

Multi-stage filtering system

Cylinder cushioning

Cylinder contamination seals

Auxiliary hydraulic valve

Automatic two-speed travel motors

Hydraulic oil, longlife oil 46

Frame

Access way with handrail

Tool storage area

Punched metal anti-slip plates

Undercover (heavy-duty)

Cab and interior

ROPS (ISO12117-2) certified cab

Silicon oil and rubber mounts with spring

Travel pedals and hand levers

Adjustable operator seat and joystick control console

Control joysticks with 4 switches each

Pilot control pattern change

Heater & air-conditioner, automatic

Flexible antenna

AM/FM stereo with MP3, USB and bluetooth input

Hydraulic safety lock lever

Opening top hatch

Cab, all-weather sound suppressed, includes:

Cup holders

Door locks

Tinted glass

Floor mat

Horn

Large storage area

Pull-up type front window

Removable lower windshield

Seat belt

Safety glass

Sun screens, front, roof, rear

Rain shield

Windshield wiper with intermittent feature

Rear view camera

Master key

Undercarriage

Undercover (heavy-duty)

Hydraulic track adjusters

Greased and sealed track link

Track Guard

Track shoes

900 mm (36") with triple grousers

Digging equipment

Boom: 7.0 m (23' 0") HD

Arm: 3.35 m (11' 0") HD

Manual centralized lubrication

OPTIONAL EQUIPMENT

Engine

Block heater: 120 V

Oil bath pre-cleaner

Diesel coolant heater, 10 kW

Water separator with heater

Auto engine shutdown

Fuel filler pump: 50 l/min(13.2 gal/min), with automatic shut-off

Electric

Extra work lights: Halogen or LED

Cab-mounted 3

Boom-mounted 2

Counterweight-mounted 1

Anti-theft system

Rotating warning beacon

OPTIONAL EQUIPMENT

Hydraulic system

Hose rupture valve: boom
Hose rupture valve: arm
Boom float function with hose rupture valves

Hydraulic piping:

Work tool management system
(up to 20 programmable memories)
Hammer & shear, 1 or 2 pump flow

Hammer & shear:

variable flow and pressure pre-setting

Additional return filter

Slope & rotator

Grapple

Oil leak (drain) line

Quick coupler piping

Volvo hydraulic quick coupler S3

Volvo hydraulic quick coupler VQC-HU, DR48

Hydraulic oil, ISO VG 32

Hydraulic oil, ISO VG 46

Hydraulic oil, ISO VG 68

Hydraulic oil, biodegradable 46

Hydraulic oil, longlife oil 32

Hydraulic oil, longlife oil 46

Hydraulic oil, longlife oil 68

Frame

Hydraulic removable counterweight

Full height counterweight: 8 450 kg (18,630 lb), 9 050 kg (19,960 lb),
9 750 kg (21,500 lb), 10 300 kg (22,710 lb for LR)

Cab and interior

Fabric seat with heater

Fabric seat with heater and air suspension

Falling object guard (FOG)

Frame-mounted

Cab-mounted

Cab-mounted falling object protective structure (FOPS)

Smoker kit (ashtray and lighter)

Safety net for front window

Lower wiper with intermittent control

Side view camera

Anti-vandalism kit

Undercarriage

Full track guard

Mechanically retractable width track gauge

Track shoes

Track shoes 600/700/800/900 mm (24"/28"/32"/36")
with triple grousers

Track shoes 600 mm (24") HD with triple grousers

Track shoes 600 mm (24") with double grousers

Digging equipment

Boom: 6.5 m (21' 4") ME, 9.0 m (30' 0" for LR)

Arm: 2.55 m, 3.0 m, 3.35 m, 3.9 m, 4.8 m, 6.0 m (8' 4", 9' 10",
11' 0", 12' 10", 15' 9", 19' 8" for LR)

Linkage with lifting eye

Service

Tool kit, daily maintenance

Tool kit, full scale

Automatic lubrication system

Cleaner kit, air blow gun

SELECTION OF VOLVO OPTIONAL EQUIPMENT

Auxiliary hydraulics Breaker/Shear Tilt / Rotator



Side-view camera



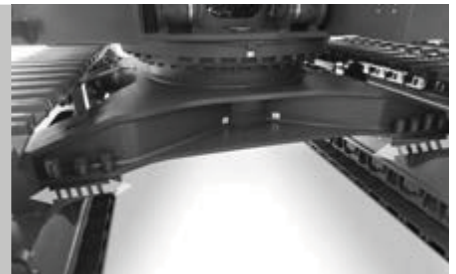
LED Lights



Air compressor



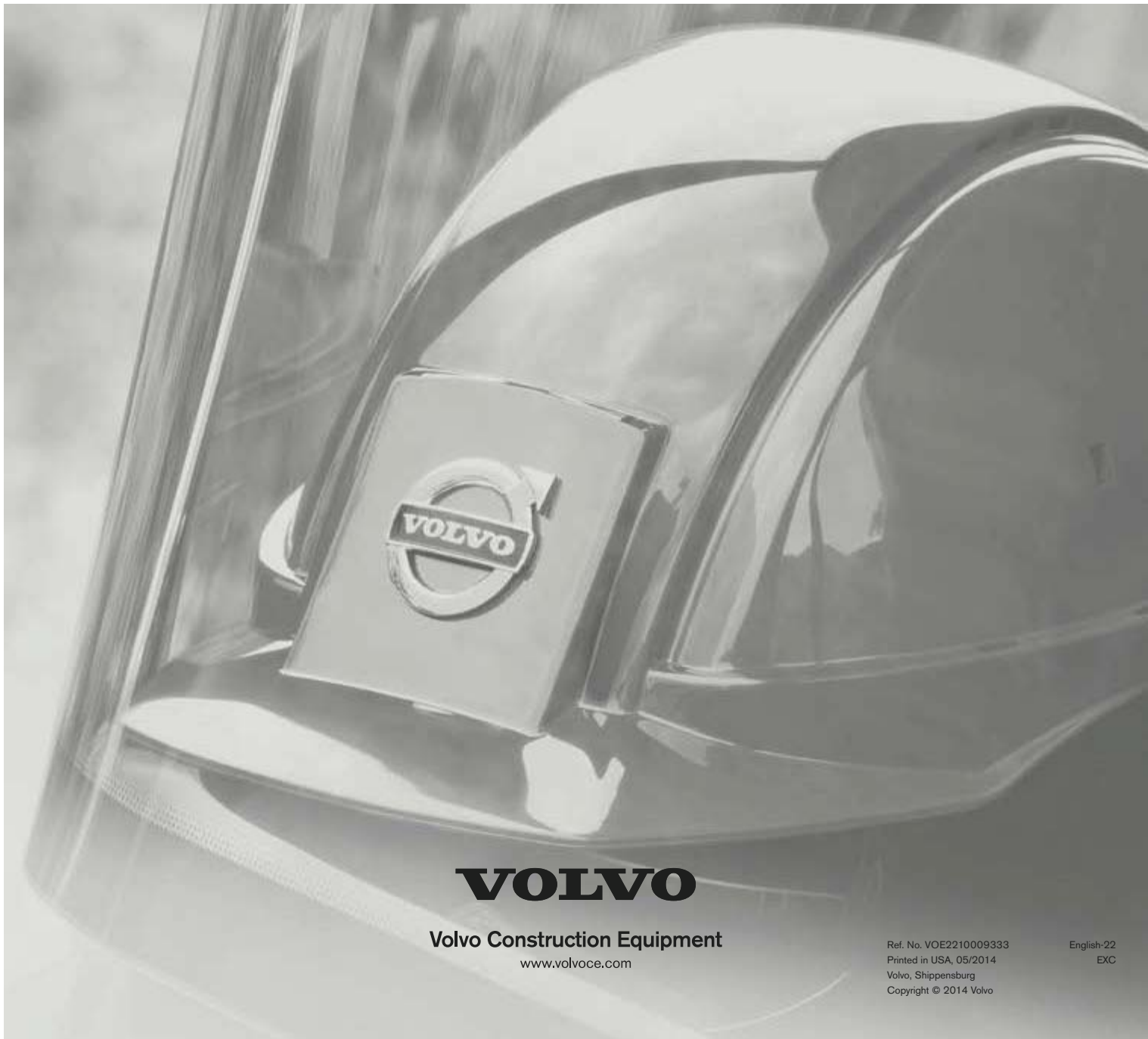
Retractable undercarriage



Removable counterweight



Not all products are available in all markets. Under our policy of continuous improvement, we reserve the right to change specifications and design without prior notice. The illustrations do not necessarily show the standard version of the machine.



VOLVO

Volvo Construction Equipment
www.volvoce.com

Ref. No. VOE2210009333
Printed in USA, 05/2014
Volvo, Shippensburg
Copyright © 2014 Volvo

English-22
EXC